

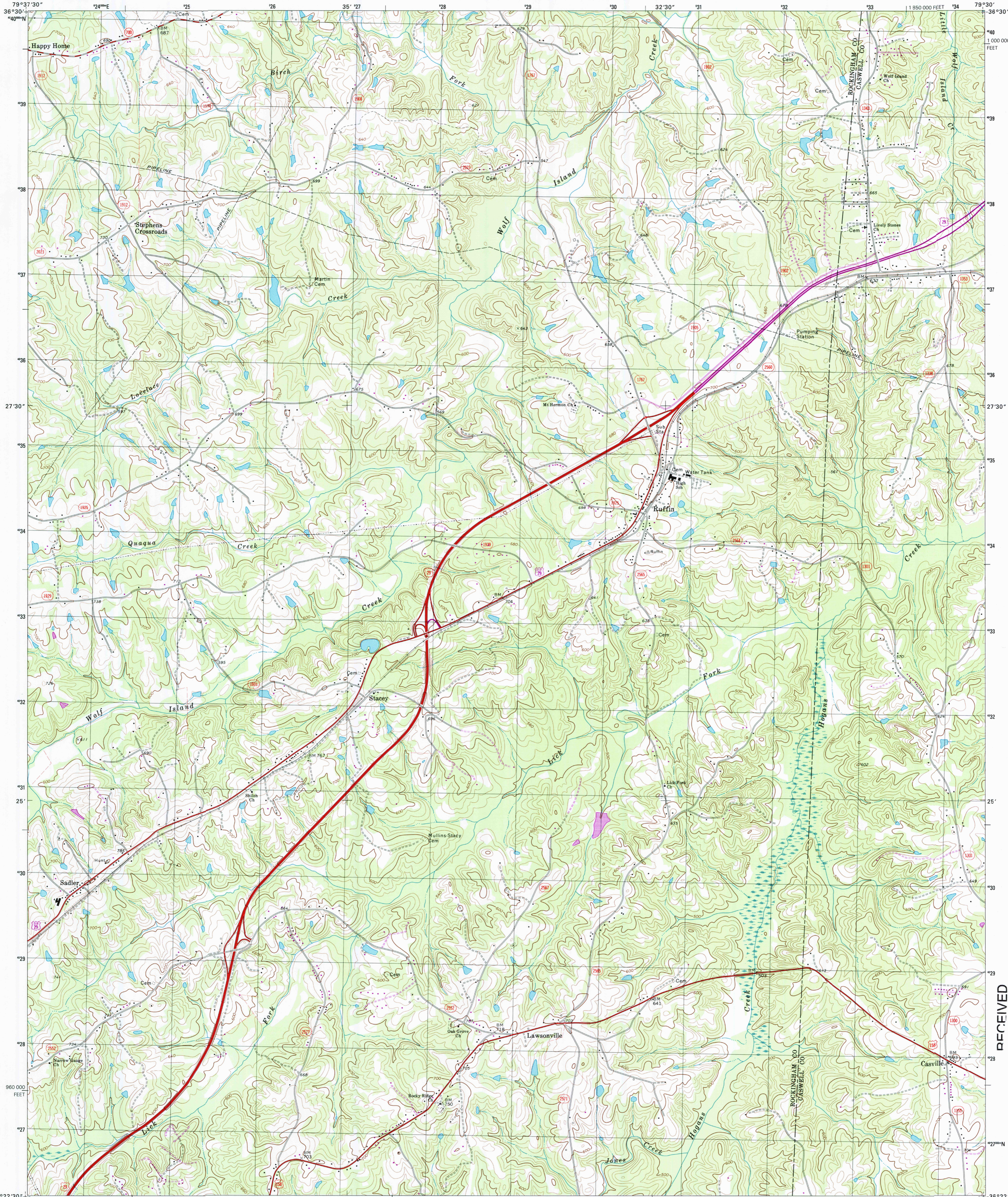


U.S. DEPARTMENT OF THE INTERIOR  
U.S. GEOLOGICAL SURVEY

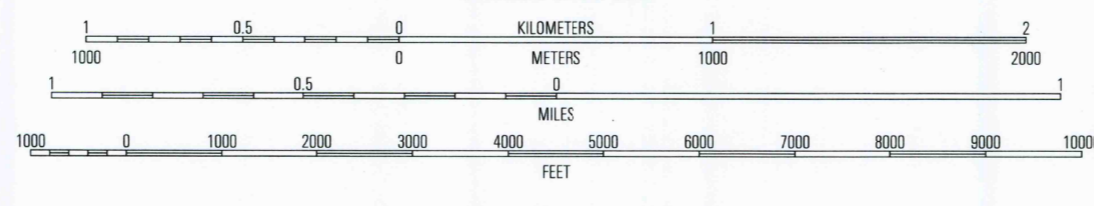
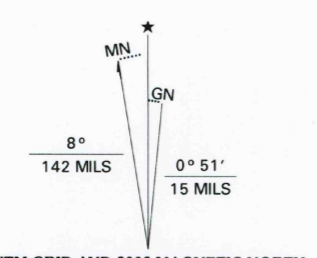


STATE OF NORTH CAROLINA  
NORTH CAROLINA GEOLOGICAL SURVEY  
DEPARTMENT OF ENVIRONMENT AND NATURAL RESOURCES

RUFFIN QUADRANGLE  
NORTH CAROLINA  
7.5-MINUTE SERIES (TOPOGRAPHIC)



Produced by the United States Geological Survey in cooperation with the North Carolina Department of Environment and Natural Resources. Topography compiled 1971. Planimetry derived from imagery taken 1991 and other sources. Photosinspected using imagery dated 2002; no major culture or drainage changes observed. Survey control current as of 1971. Boundaries verified 2002. North American Datum of 1927 (NAD 27). Projection and 10 000-foot ticks: North Carolina coordinate system (Lambert conformal conic). 1000-meter Universal Transverse Mercator grid, zone 17. North American Datum of 1983 (NAD 83) is shown by dashed corner ticks. The values of the shift between NAD 27 and NAD 83 for 7.5-minute intersections are obtainable from National Geodetic Survey NADCON software. Short dashed blue lines indicate elliptical bay outlines visible on aerial photographs. Information shown in purple may not meet USGS content standards and may conflict with previously mapped contours.



CONTOUR INTERVAL 20 FEET  
NATIONAL GEODETIC VERTICAL DATUM OF 1929  
(TO CONVERT ELEVATIONS TO THE NORTH AMERICAN VERTICAL DATUM OF 1988, SUBTRACT 1 FOOT)  
TO CONVERT FROM FEET TO METERS, MULTIPLY BY 0.3048

THIS MAP COMPLIES WITH NATIONAL MAP ACCURACY STANDARDS  
FOR SALE BY U.S. GEOLOGICAL SURVEY, P.O. BOX 25286, DENVER, COLORADO 80225  
A FOLDER DESCRIBING TOPOGRAPHIC MAPS AND SYMBOLS IS AVAILABLE ON REQUEST



QUADRANGLE LOCATION

ROAD CLASSIFICATION

- Primary highway: solid red line
- Improved surface: dashed red line
- Secondary highway: solid red line with short dashes
- Unimproved road: dashed red line with long dashes
- Light-duty road, hard or improved surface: solid red line with dots
- Interstate Route: red shield with white border
- U.S. Route: red shield with white border
- State Route: red circle with white border

1	2	3	1 Northeast Eden
			2 Danville
			3 Danville
4	5	4 Southeast Eden	
		5 Park Spring	
		6 Redville	
6	7	8	7 Williamsburg
			8 Cherry Grove

ADJOINING 7.5' QUADRANGLES

RUFFIN, NC  
2002

NIMA 5066 1NE-SERIES V842

RECEIVED  
SEP 3 0 2002  
USGS/IMU  
HISTORICAL MAP ARCHIVES

