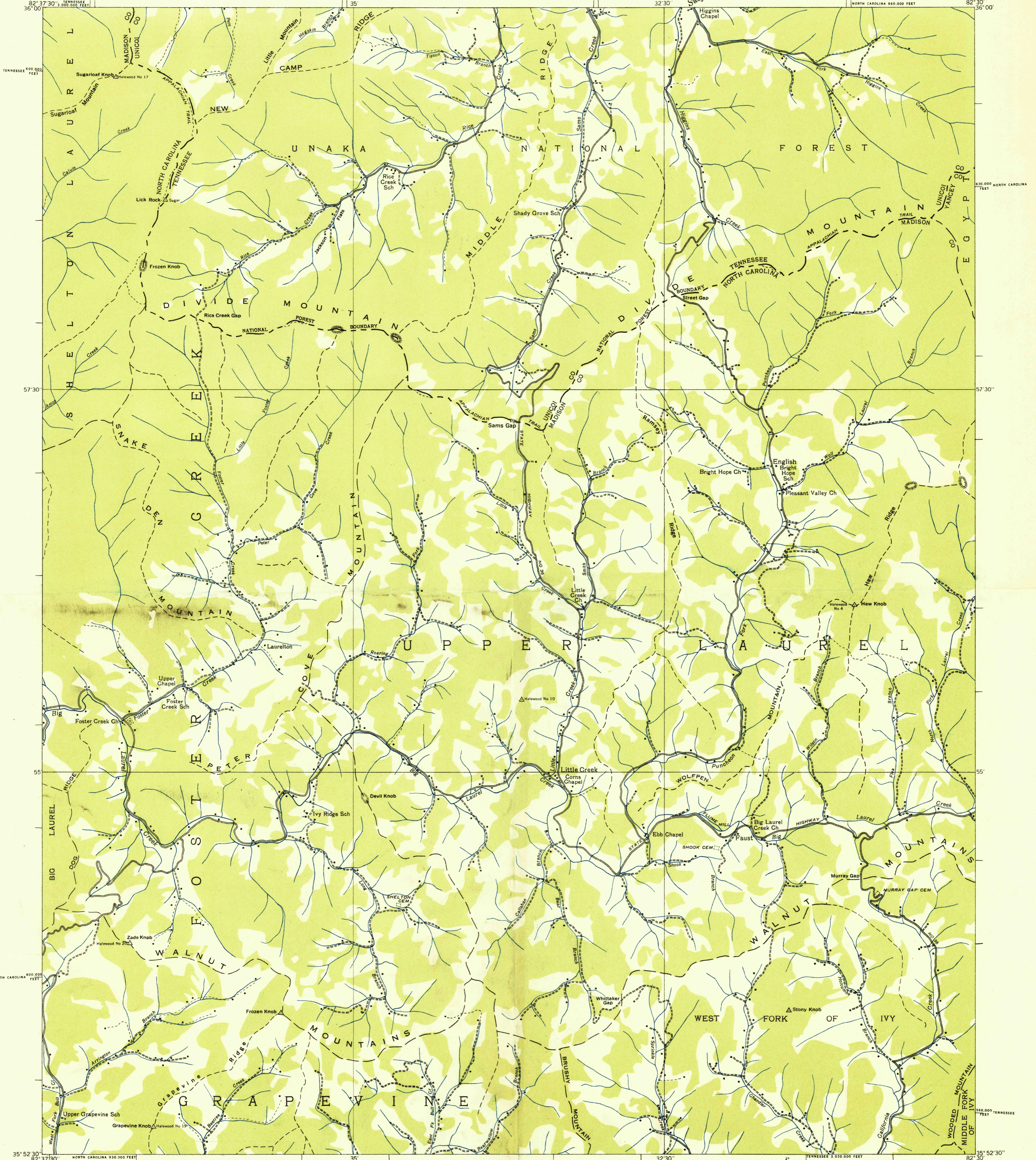
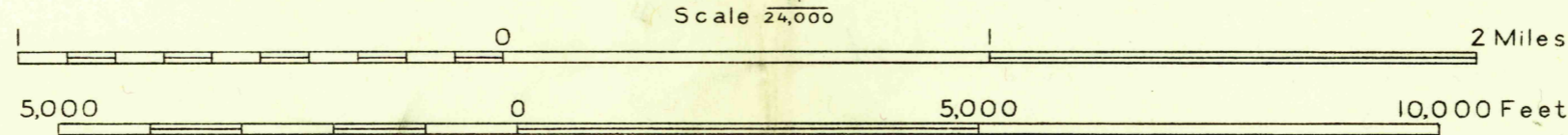


Advance sheet
Subject to correction



Albert Pike, Division Engineer
Compiled by U. S. Geological Survey from aerial photographs
Control by U. S. Geological Survey
Field examination in 1935 and 1936



TRUE NORTH
MAGNETIC NORTH
APPROXIMATE MEAN
DECLINATION, 1936

Polyconic projection, 1927 North American datum
10,000 foot grid based on North Carolina and
Tennessee rectangular coordinate systems

Ridge line
Trail
SAMS GAP, N. C.-TENN.
191-NE

U.S.G.S.
FINE COPY
TOPOGRAPHIC DIVISION

USGS
Historical File
Topographic Division