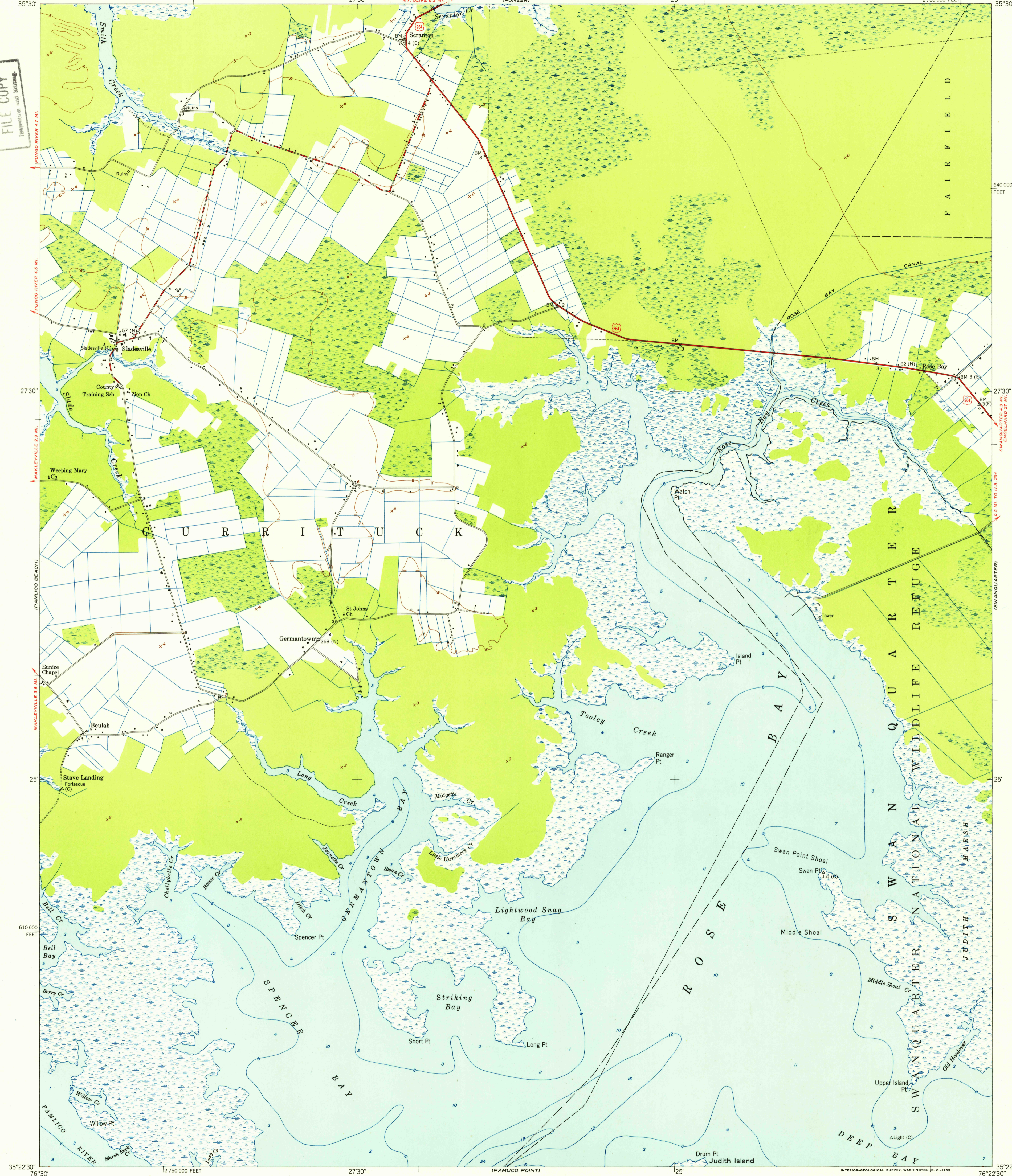
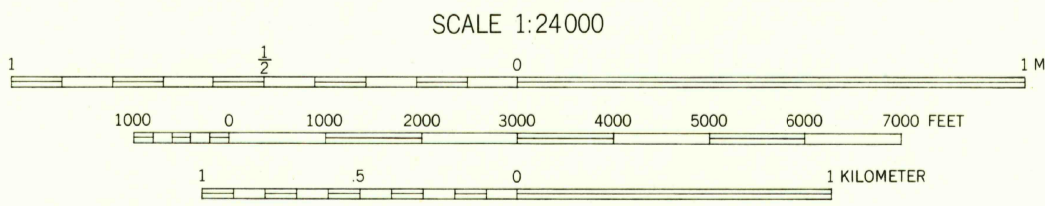


B. N. M. A.
FILE COPY
Inspection and Rating.



Mapped by the U. S. Coast & Geodetic Survey
Edited and published by the Geological Survey
Control by USC&GS (C), USCE (E), and
North Carolina Geodetic Survey (N)
Culture and drainage in part compiled from
aerial photographs taken 1948
Topography by plane-table surveys 1949. Field check 1951
Hydrography from surveys dated 1870 to 1935 and supplementary information
Polyconic projection. 1927 North American datum
10,000-foot grid based on North Carolina coordinate system



SCALE 1:24000
CONTOUR INTERVAL 5 FEET
DATUM IS MEAN SEA LEVEL
DEPTH CURVES AND SOUNDINGS IN FEET—DATUM IS MEAN LOW WATER
SHORELINE SHOWN REPRESENTS THE APPROXIMATE LINE OF MEAN HIGH WATER
THE AVERAGE RANGE OF TIDE IS LESS THAN 4 FEET
THIS MAP COMPLIES WITH NATIONAL MAP ACCURACY STANDARDS
FOR SALE BY U. S. GEOLOGICAL SURVEY, WASHINGTON 25, D. C.
A FOLDER DESCRIBING TOPOGRAPHIC MAPS AND SYMBOLS IS AVAILABLE ON REQUEST

USGS
Historical File
Topographic Division

ROAD CLASSIFICATION
Heavy-duty 4 LANE 16 LANE Light-duty
Medium-duty 4 LANE 16 LANE Unimproved dirt
U. S. Route State Route

QUADRANGLE LOCATION

B. N. M. A.
FILE COPY
Inspection and Rating.

SCRANTON, N. C.
N3522.5-W7622.5/7.5
1951