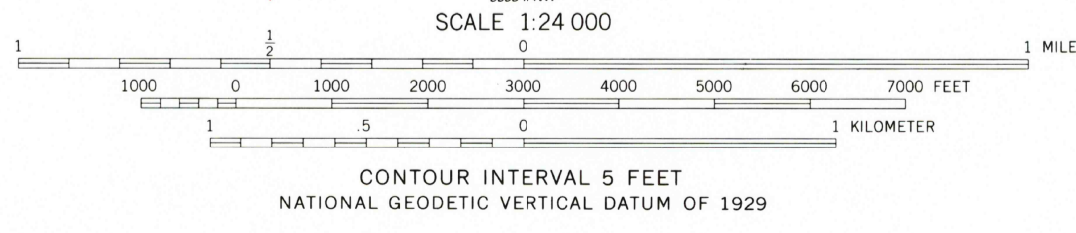
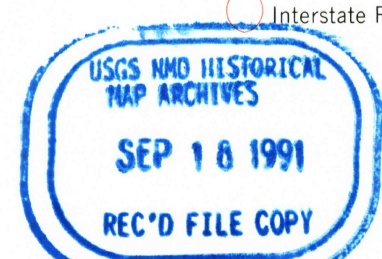


Mapped, edited, and published by the Geological Survey  
Control by USGS, NOS/NOAA, and North Carolina Geodetic Survey  
Topography by photogrammetric methods from aerial photographs taken 1977. Field checked 1979. Map edited 1984  
Projection and 10,000-foot grid ticks: North Carolina coordinate system (Lambert conformal conic)  
1000-meter Universal Transverse Mercator grid, zone 18  
1927 North American Datum  
The difference between 1927 North American Datum and North American Datum of 1983 (NAD 83) for 7.5-minute intersections is given in USGS Bulletin 1875. The NAD 83 is shown by dashed corner ticks  
There may be private inholdings within the boundaries of the National or State reservations shown on this map

Map photoinspected 1988  
No major culture or drainage changes observed



ROAD CLASSIFICATION  
Primary highway, hard surface  
Secondary highway, hard surface  
Light-duty road, hard or improved surface  
Unimproved road  
Interstate Route  
U. S. Route  
State Route



STELLA, N. C.  
SW 4 MAYSVILLE 15' QUADRANGLE  
34077-G2-1F-024  
1984  
PHOTOINSPECTED 1988  
DMA 5551 S W - SERIES V842

THIS MAP COMPLIES WITH NATIONAL MAP ACCURACY STANDARDS  
FOR SALE BY U. S. GEOLOGICAL SURVEY  
DENVER, COLORADO 80225, OR RESTON, VIRGINIA 22092  
A FOLDER DESCRIBING TOPOGRAPHIC MAPS AND SYMBOLS IS AVAILABLE ON REQUEST