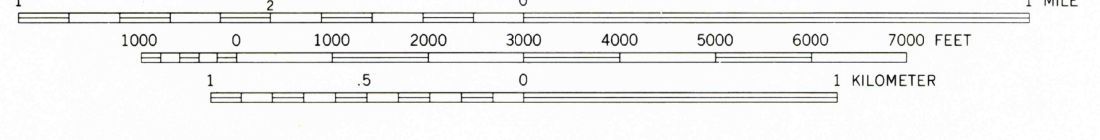
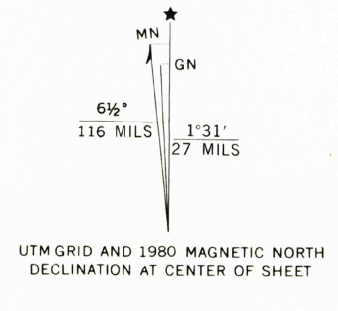




Produced and published by the Geological Survey

Orthophoto prepared from 1:80,000-scale color infrared aerial photograph taken October 7, 1980
Projection and 10,000-foot grid ticks: North Carolina coordinate system (Lambert conformal conic) 1000-meter Universal Transverse Mercator grid, zone 18. 1927 North American Datum
To place on the predicted North American Datum 1983 move the projection lines 14 meters south and 26 meters west as shown by dashed corner ticks
Photoimagery rectified by simple projection



PRINCIPAL NUMBERED HIGHWAYS
Interstate Route U.S. Route State Route



This area also covered by 1:24,000-scale orthophotomaps

TOPSAIL, N. C.
N3422.5-W7737.5/7.5
1980

THIS MAP COMPLIES WITH NATIONAL MAP ACCURACY STANDARDS FOR SALE BY U. S. GEOLOGICAL SURVEY, RESTON, VIRGINIA 22092

DMA 5452 1 NW-SERIES V042

RETURN TO:
USGS NHD HISTORICAL MAP ARCHIVES