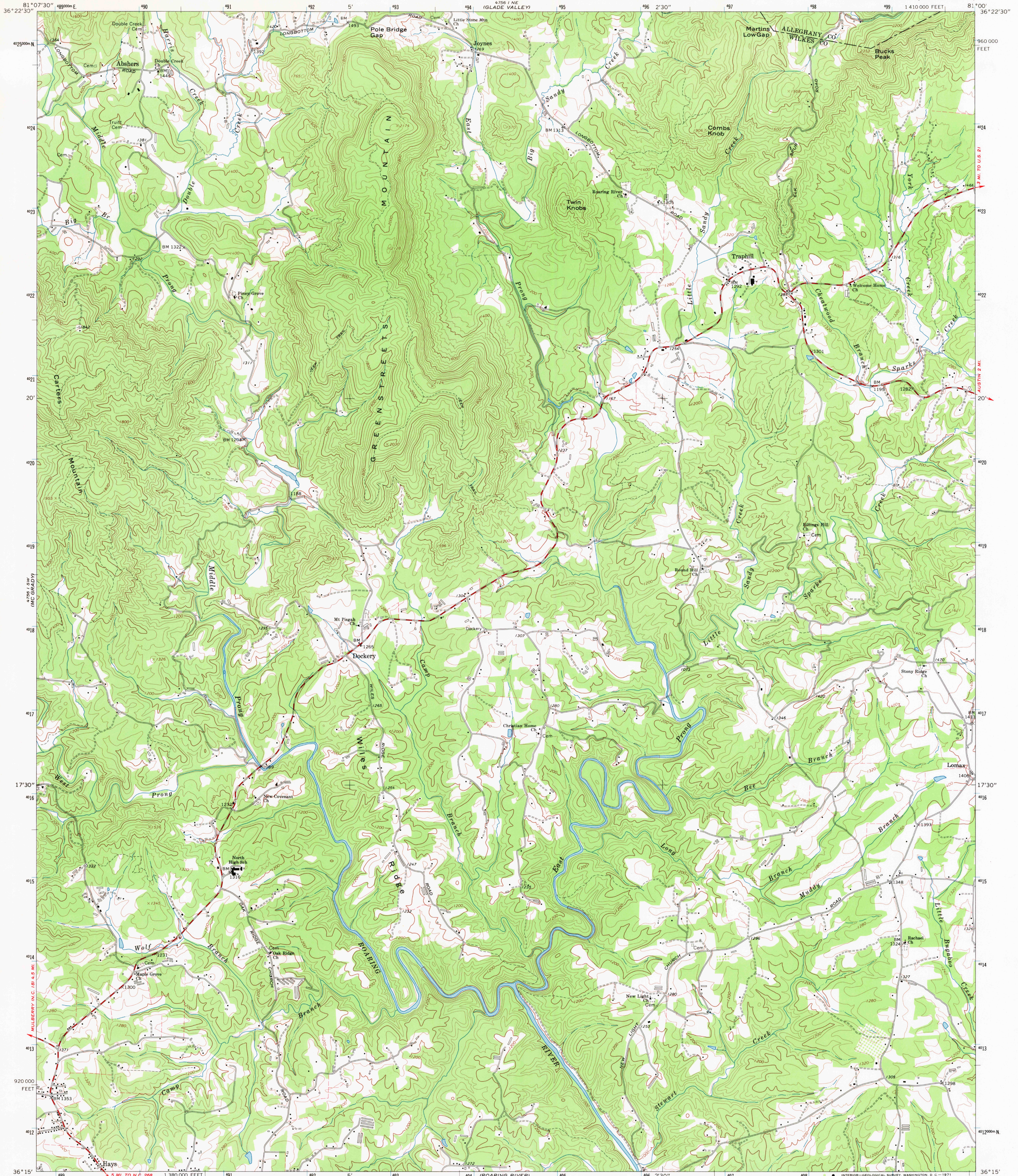


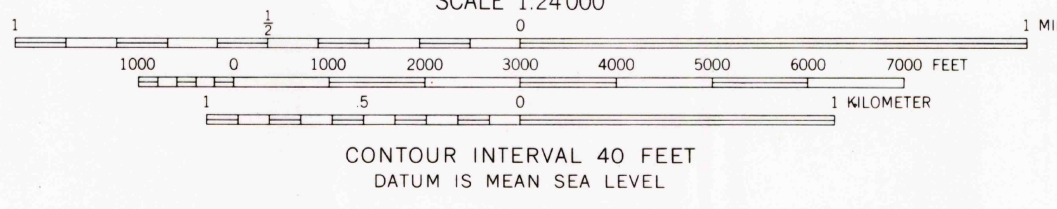
UNITED STATES  
DEPARTMENT OF THE INTERIOR  
GEOLOGICAL SURVEY

TRAPHILL QUADRANGLE  
NORTH CAROLINA  
7.5 MINUTE SERIES (TOPOGRAPHIC)



Mapped, edited, and published by the Geological Survey  
Control by USGS and USC&GS  
Topography by photogrammetric methods from aerial  
photographs taken 1964. Field checked 1968  
Polyconic projection. 1927 North American datum  
10,000-foot grid based on North Carolina coordinate system  
1000-meter Universal Transverse Mercator grid ticks,  
zone 17, shown in blue  
Fine red dashed lines indicate selected fence and field lines where  
generally visible on aerial photographs. This information is unchecked

UTM GRID AND 1968 MAGNETIC NORTH  
DECLINATION AT CENTER OF SHEET



ROAD CLASSIFICATION  
Secondary highway, all weather, Light-duty road, all weather,  
hard surface improved surface  
Unimproved road, fair or dry  
weather



THIS MAP COMPLIES WITH NATIONAL MAP ACCURACY STANDARDS  
FOR SALE BY U. S. GEOLOGICAL SURVEY, WASHINGTON, D. C. 20242  
A FOLDER DESCRIBING TOPOGRAPHIC MAPS AND SYMBOLS IS AVAILABLE ON REQUEST

USGS  
Historic  
Topographic Division

TRAPHILL, N.C.  
N3615-W8100/7.5  
1968

AMS 4756 I SE-SERIES V 842

2825  
APR 6 1971  
U.S.G.S.  
FILE COPY  
TOPOGRAPHIC DIVISION