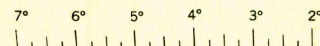
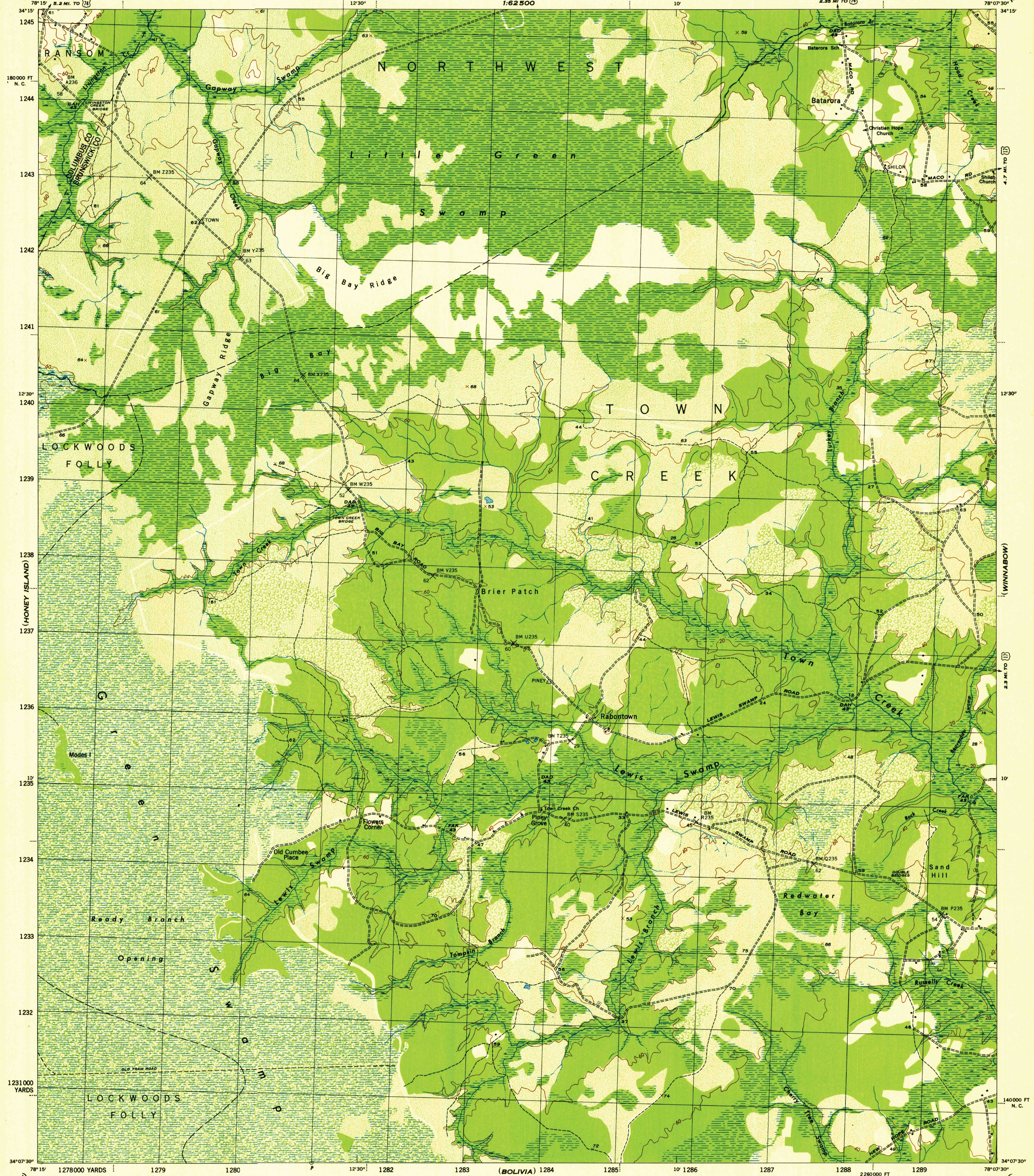


SCALE 1:31680



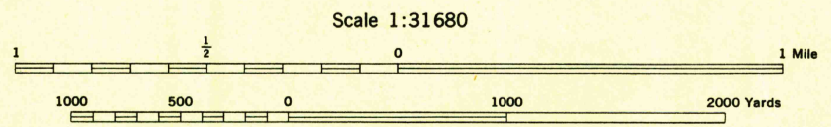
(ACME)  
1:62500

(ACME)  
1:62500



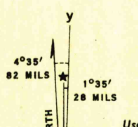
Mapped by the U. S. Coast and Geodetic Survey under the direction of the Chief of Engineers, U. S. Army, 1943.  
Control by the U. S. Coast and Geodetic Survey.  
Planimetry by U. S. C. & G. S. from 1942 air photographs.  
Planetable topography and field edit by U. S. C. & G. S., 1943.  
Polyconic projection, North American datum of 1927.  
Recoverable horizontal control stations of less than third order accuracy are shown by circles.

**ROAD CLASSIFICATION 1943**  
Dependable hard surface, heavy-duty road. U. S. route (74)  
Loose surface graded, dry-weather road.  
Secondary, hard surface, all-weather road. Dirt road. State route (26)  
More than two lanes indicated by note along road with tick at point of change. 3 LANE 4 LANE  
THIS MAP COMPLIES WITH THE NATIONAL STANDARD MAP ACCURACY REQUIREMENTS



CONTOUR INTERVAL 20 FEET  
DATUM IS MEAN SEA LEVEL

ONE THOUSAND YARD GRID COMPUTED FROM "GRID SYSTEM FOR PROGRESSIVE MAPS IN THE U. S. - ZONE B, U. S. C. & G. S. SPECIAL PUBLICATION NO. 59" THE LAST THREE DIGITS OF THE GRID NUMBERS ARE OMITTED. THE STATE GRID IS INDICATED AT 10,000 FOOT INTERVALS. NOTE: OFFICERS USING THIS MAP WILL WANT HEREIN CORRECTIONS AND ADDITIONS WHICH COME TO THEIR ATTENTION AND MAIL DIRECT TO "THE CHIEF OF ENGINEERS, WASHINGTON, D. C."



Use diagram only to obtain numerical values. To determine magnetic north line, connect the pivot point "P" on the south edge of the map with the value of the angle between grid and magnetic north as plotted on the degree scale at the north edge of the map.

**WOODLAND CLASSIFICATION**  
Dense woodland  
Dense brush  
Scattered brush and trees  
Orchard  
Marsh or swamp  
Low ground, intermittently flooded

LEWIS SWAMP, N. C.  
N3407.5-W7807.5/7.5  
EDITION OF 1944

**HISTORICAL FILES**  
(DO NOT REMOVE)