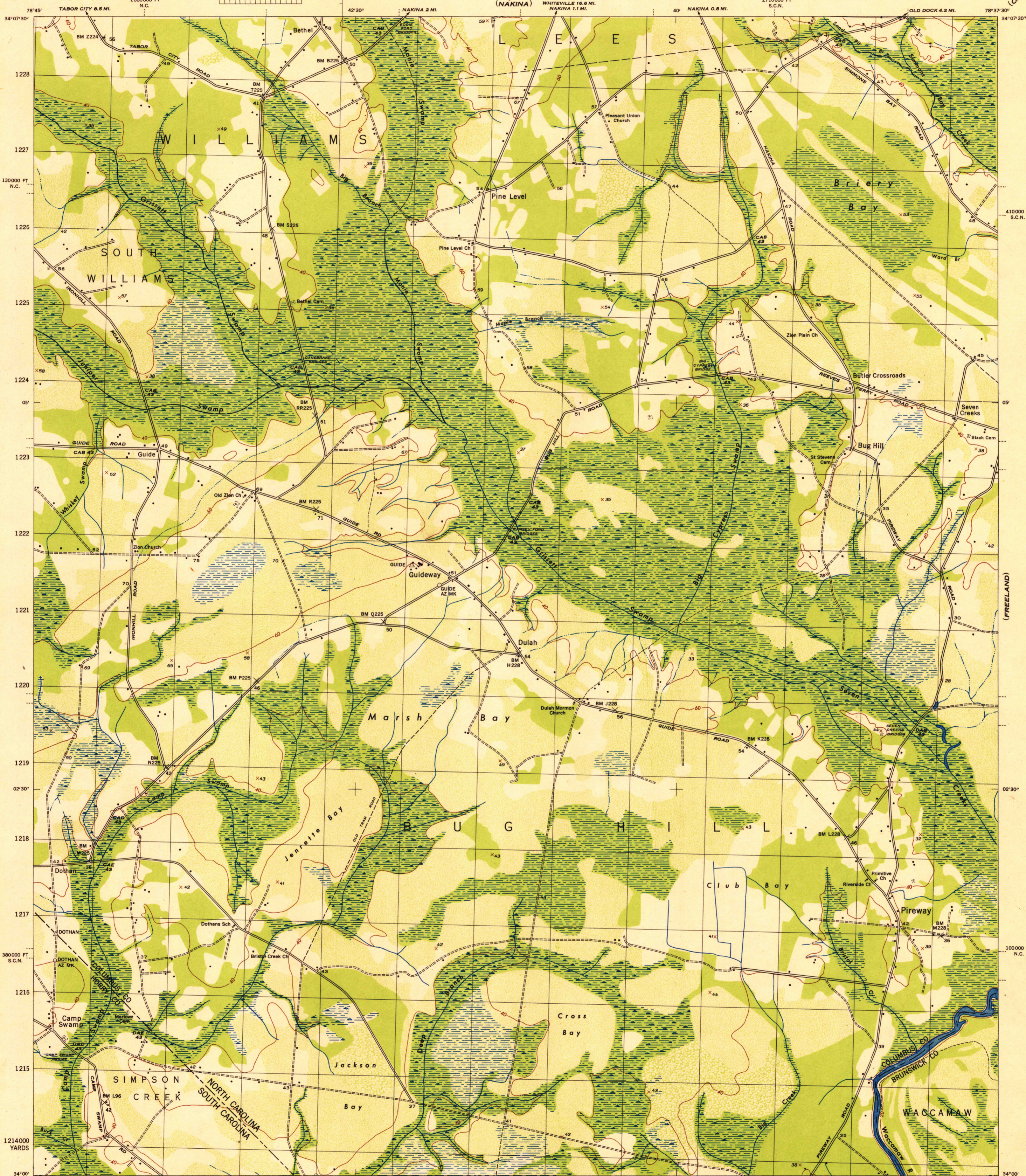
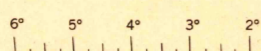


SCALE 1:31680



(OLD DOCK)  
(FREELAND)  
(CALABASH)

Mapped by the U. S. Coast and Geodetic Survey under the direction of the Chief of Engineers, U. S. Army, 1943. Control by the U. S. Coast and Geodetic Survey. Planimetry by U. S. C. & G. S. from 1942 air photographs. Planimetric topography and field edit by U. S. C. & G. S., 1943. Polyconic projection, North American datum of 1927. Recoverable horizontal control stations of less than third order accuracy are shown by circles.

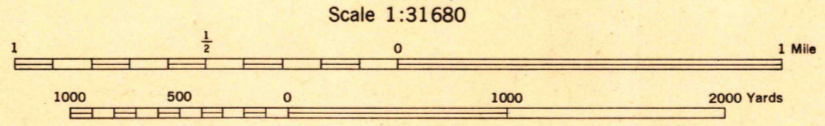
**ROAD CLASSIFICATION 1943**

Dependable hard-surface, heavy-duty road. Loose-surface graded, dry-weather road. U. S. route 16

Secondary, hard-surface, all-weather road. Dirt road. State route 26

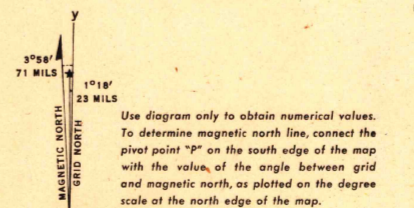
More than two lanes indicated by note along road with tick at point of change. 3 LANE 4 LANE

THIS MAP COMPLIES WITH THE NATIONAL STANDARD MAP ACCURACY REQUIREMENTS



CONTOUR INTERVAL 20 FEET  
DATUM IS MEAN SEA LEVEL

ONE THOUSAND YARD GRID COMPUTED FROM "GRID SYSTEM FOR PROGRESSIVE MAPS IN THE U. S. ZONE 8 U. S. C. & G. S. SPECIAL PUBLICATION NO. 89" THE LAST THREE DIGITS OF THE GRID NUMBERS ARE OMITTED. THE STATE GRIDS ARE INDICATED AT 10,000 FOOT INTERVALS. NOTE: OFFICERS USING THIS MAP WILL MARK REVISION CORRECTIONS AND ADDITIONS WHICH COME TO THEIR ATTENTION AND MAIL DIRECT TO THE CHIEF OF ENGINEERS, WASHINGTON, D. C.



**WOODLAND CLASSIFICATION**

Dense woodland. Scattered brush and trees. Marsh or swamp. Dense brush. Orchard. Low ground, intermittently flooded.

PIREWAY, N.C.-S.C.  
N3400-W7837.5/7.5  
EDITION OF 1943

USCS  
Historical File  
Topographic Division  
FILE COPY  
TOPOGRAPHIC DIVISION

HISTORICAL