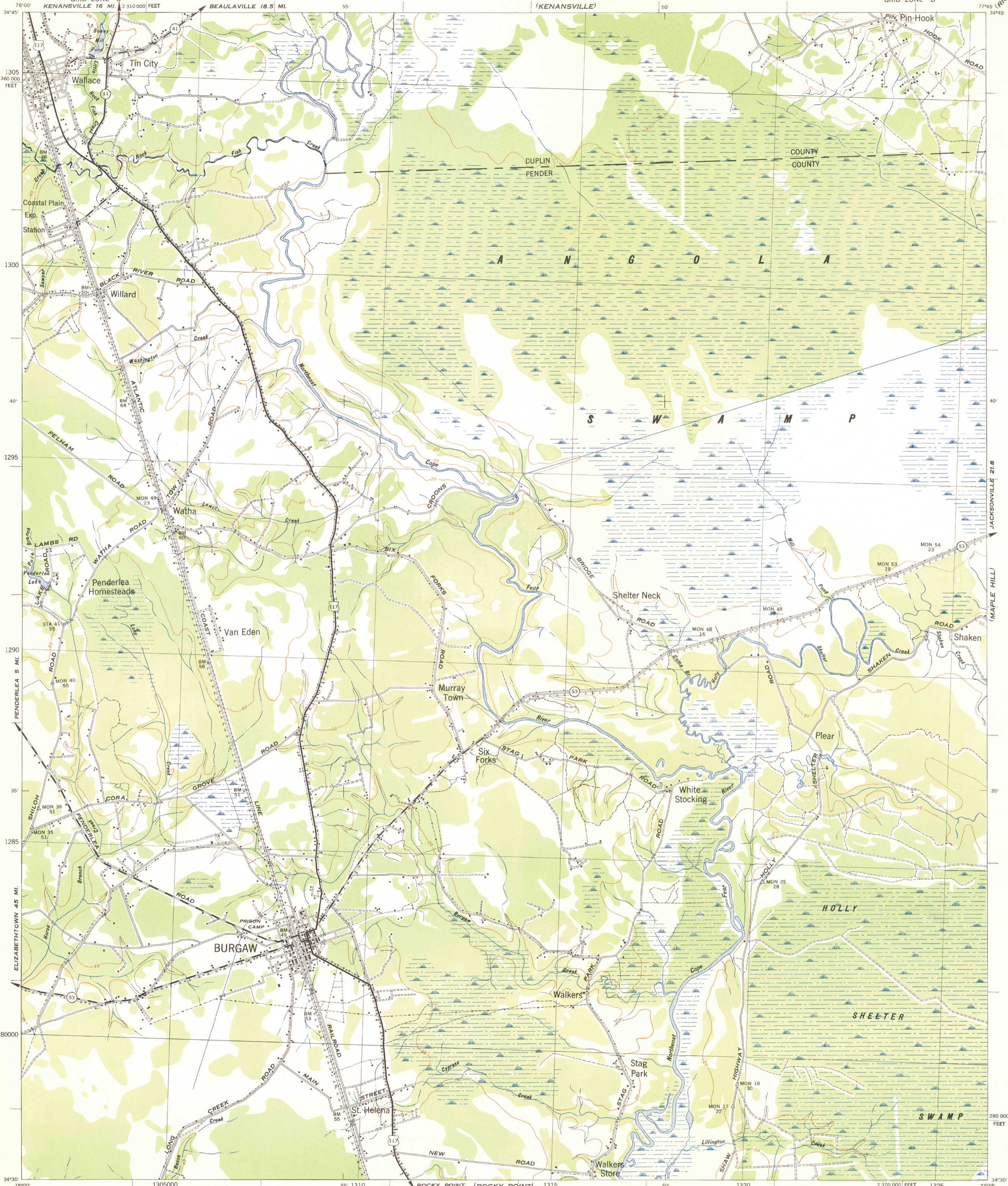


NORTH CAROLINA
BURGAW QUADRANGLE

WAR DEPARTMENT
CORPS OF ENGINEERS, U.S. ARMY

NORTH CAROLINA
BURGAW QUADRANGLE



10 Miles
9
8
7
6
5
4
3
2
1
0
1
2
3
4
5
6
7
8
9
10 Miles

78°00' 1305000 55' 1310 50' 1320 77°45' 1325
34°45' 128000 34°30'

30th Engineer Battalion, U.S. Army, Direction of Chief of Engineers.
Control by U.S.G.S., U.S.C. & G.S., 1932-33, and 30th Engineer Battalion, 1941-42
Topography by 30th Engineer Battalion, using Multiplex Aero Projectors.
Aerial Photography by 1st Photographic Squadron, Air Corps, U.S. Army, 1942.
Polyconic Projection, North American, 1927 Datum.
30th ENGINEER BATTALION REPRODUCTION PLANT, FORT BELVOIR, VA.

ROAD CLASSIFICATION
Main Highway
Graded earth, gravel and stone
Unimproved
U.S. Route
State Route

1 0 1 2 3 Miles
1000 0 1000 2000 3000 4000 5000 Yards
Scale 1:62500
CONTOUR INTERVAL 20 FEET--DATUM IS MEAN SEA LEVEL (1929 ADJ.)
NOTE: OFFICERS USING THIS MAP WILL MARK HEREON CORRECTIONS AND ADDITIONS WHICH COME TO THEIR ATTENTION AND MAIL DIRECT TO "THE CHIEF OF ENGINEERS, WASHINGTON, D. C."

31°46'
32 Miles
63°31'
63 Miles
APPROX. MEAN DECLINATION 1942
ANNUAL MAG. CHANGE 0.1" 03 MILLS DECREASE

GRID TABLES, U.S.C. & G.S. SPECIAL PUBLICATION NO. 959
(THE LAST THREE DIGITS OF THE GRID NUMBERS ARE OMITTED)
10,000 FOOT GRID SYSTEM BASED ON NORTH CAROLINA PLANE COORDINATE SYSTEM
BURGAW, N. C.
N3430-7745/15