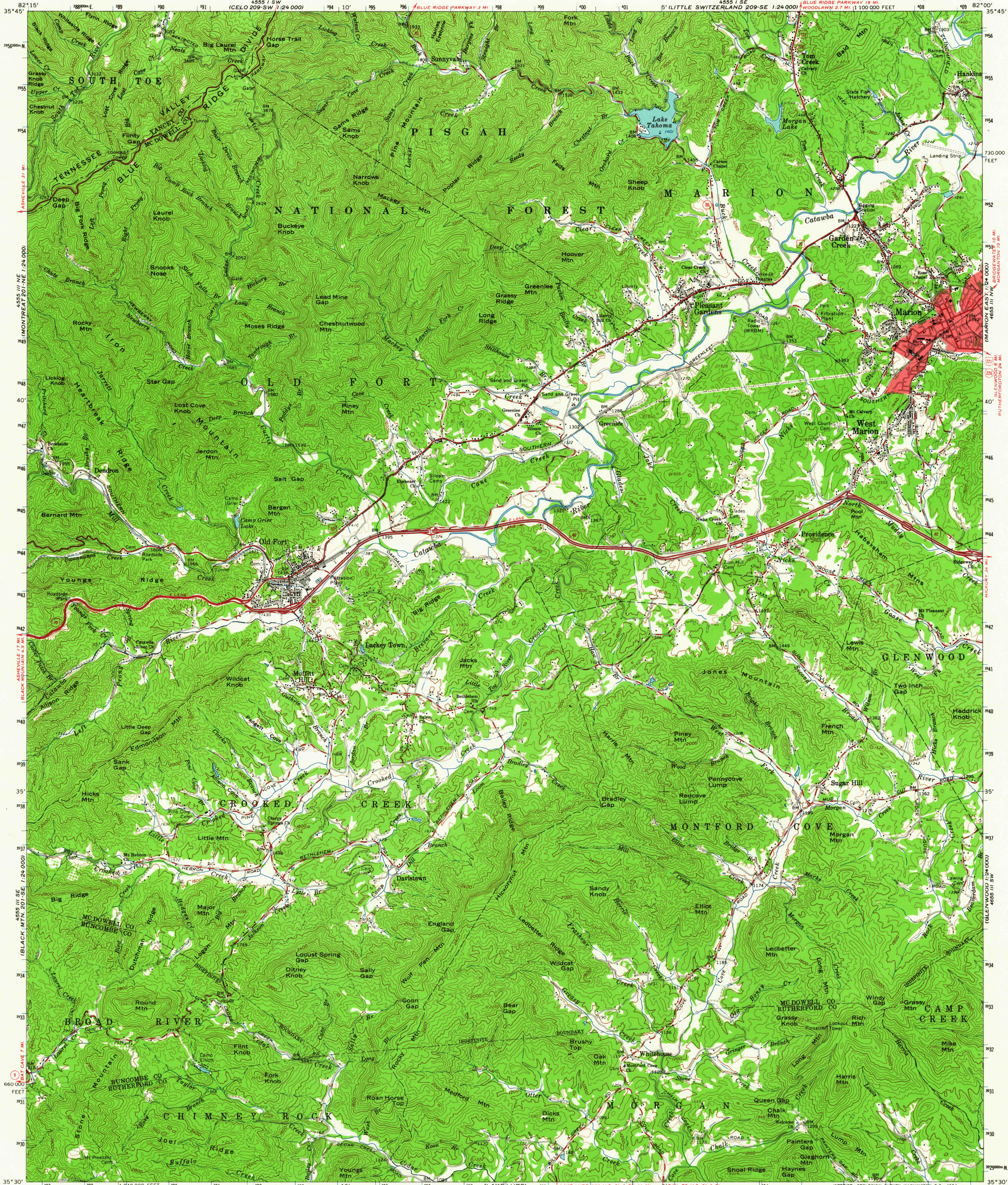
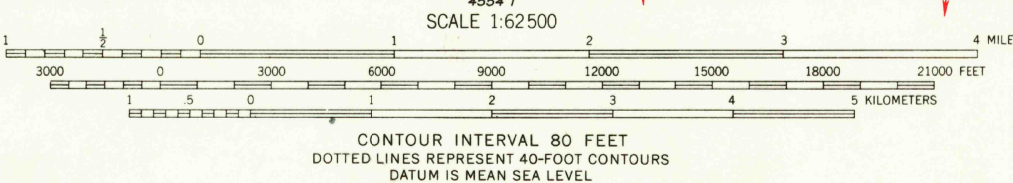
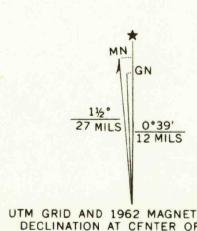


UNITED STATES  
DEPARTMENT OF THE INTERIOR  
GEOLOGICAL SURVEY

MARION QUADRANGLE  
NORTH CAROLINA  
15 MINUTE SERIES (TOPOGRAPHIC)



Mapped, edited, and published by the Geological Survey  
Control by USGS, USC&GS, and TVA  
Topography by photogrammetric methods from aerial  
photographs taken 1955. Field checked 1962  
Polyconic projection. 1927 North American datum  
10,000-foot grid based on North Carolina coordinate system  
1000-meter Universal Transverse Mercator grid ticks,  
zone 17, shown in blue  
Red tint indicates area in which only  
landmark buildings are shown



ROAD CLASSIFICATION  
Heavy-duty ——— Light-duty ———  
Medium-duty ——— Unimproved dirt ———  
Interstate Route — U.S. Route — State Route —

THIS MAP COMPLIES WITH NATIONAL MAP ACCURACY STANDARDS  
FOR SALE BY U.S. GEOLOGICAL SURVEY, WASHINGTON 25, D. C.  
AND BY U. S. TENNESSEE VALLEY AUTHORITY, CHATTANOOGA OR KNOXVILLE, TENN.  
A FOLDER DESCRIBING TOPOGRAPHIC MAPS AND SYMBOLS IS AVAILABLE ON REQUEST

USGS  
Historical File  
Topographic Division  
FILE COPY  
TOPOGRAPHIC DIVISION

MARION, N. C.  
N3530—W8200/15  
1962  
AMS 4555 II—SERIES V742

2840