

(JOHN STATION)

NORTH CAROLINA -- SOUTH CAROLINA 1:62,500

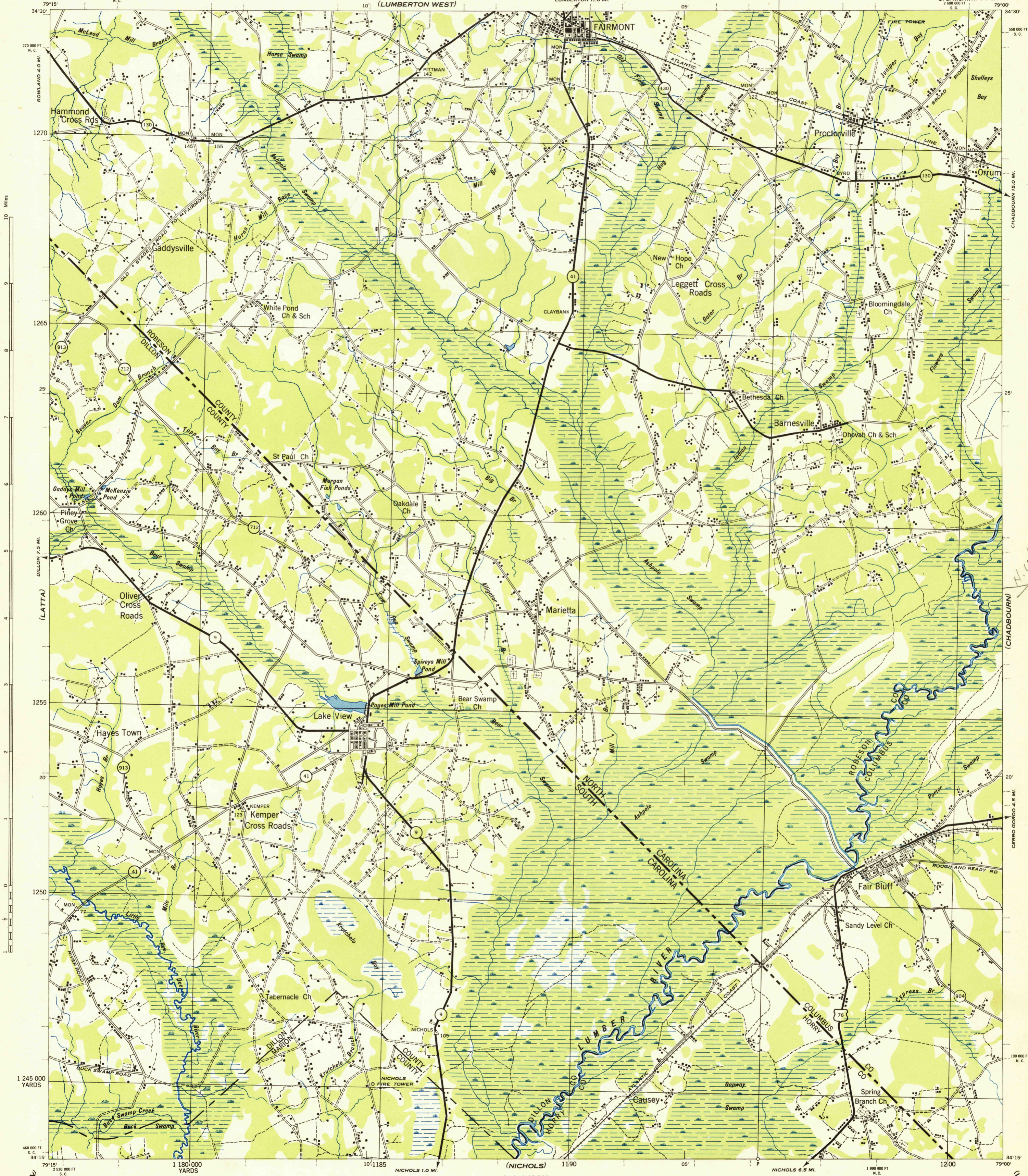
WAR DEPARTMENT
CORPS OF ENGINEERS, U. S. ARMY

6° 5' 4' 3' 2' 1' 0'

Advance Edition
Subject to Correction

PAGES MILL QUADRANGLE
15 MINUTE SERIES

(LUMBERTON EAST)



10 Miles

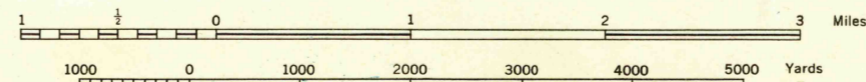
(LATTA)

1 245 000 YARDS

(MARION)

Prepared under the direction of the Chief of Engineers, U. S. Army, 1943.
 Control by U. S. G. S., U. S. C. & G. S., and 30th Engineers, 1942-43.
 Compiled by 30th Engineers.
 Aerial Photography by A-4, 1938.
 Polyconic Projection, North American Datum 1927.

Scale 1:62,500



DATUM IS MEAN SEA LEVEL

FIVE THOUSAND YARD GRID COMPUTED FROM "GRID SYSTEM FOR PROGRESSIVE MAPS
 IN THE U. S.," ZONE B, U. S. C. & G. S. SPECIAL PUBLICATION NO. 59
 THE LAST THREE DIGITS OF THE GRID NUMBERS ARE OBTAINED
 FROM THE STATE GRIDS AS INDICATED AT 10 000 FOOT INTERVALS

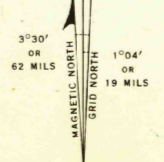
NOTE: OFFICERS USING THIS MAP WILL MARK HEREON CORRECTIONS AND ADDITIONS WHICH COME
 TO THEIR ATTENTION AND MAIL DIRECT TO THE CHIEF OF ENGINEERS, WASHINGTON, D. C.

ROAD CLASSIFICATION 1943

Dependable hard-surface, heavy-duty road.	Loose-surfaced graded, dry weather road.	U. S. Route	76
Secondary, hard-surface, all-weather road.	Dirt road.	State Route	130

More than two lanes indicated by note along road with tick at point of change

3 LANE 4 LANE



Use diagram only to obtain numerical values. To determine magnetic north line, connect the pivot point "pr" on the south edge of the map with the value of the angle between grid and magnetic north, as plotted on the degree scale at the north edge of the map.

PAGES MILL, N.C.-S.C.

N3415-W7900/15

FILE COPY
NOT TO BE REMOVED FROM FILES