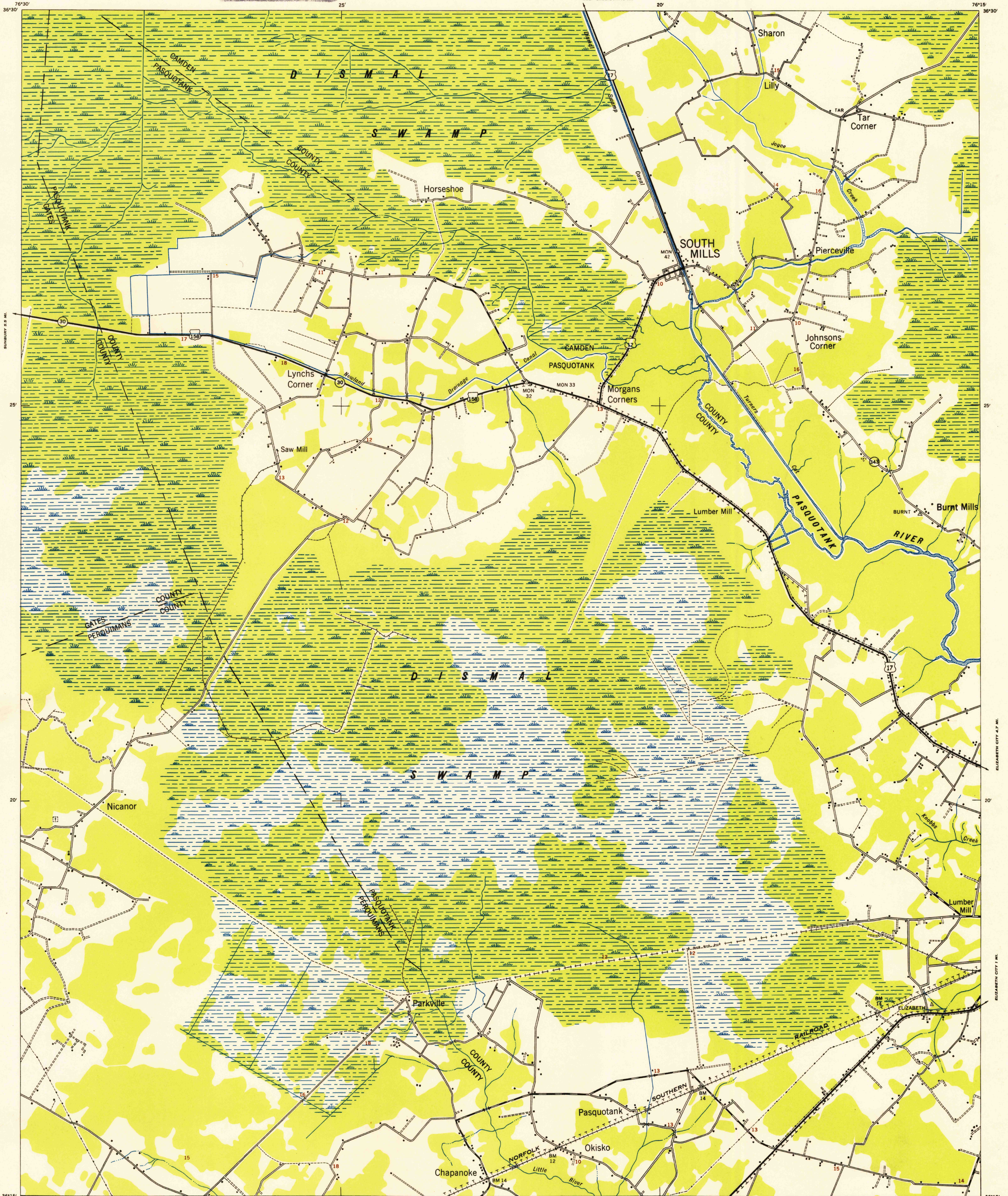
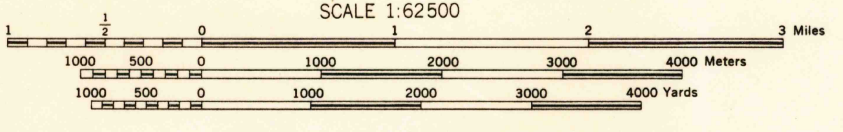


U.S.G.S. FILE COPY Inspection and Mating.



A.M.S. V742 First Edition (AMS 1), 1941; (AMS 2), 1946.

Prepared under the direction of the Chief of Engineers by the Army Map Service (AM), U. S. Army, Washington, D. C. Copied in 1946 from North Carolina, 1:62,500, AMS, Sheet 5756 IV, 1941. Original map compiled from aerial photographs by stereophotogrammetric methods. Aerial photography by U. S. Army Air Force, 1940. Horizontal and vertical control by USCGS. Scale changed, one thousand yard grid added and marginal data revised, 1946. This map complies with the national standard map accuracy requirements.



MAXIMUM ELEVATION LESS THAN 20 FEET DATUM IS MEAN SEA LEVEL

POLYCONIC PROJECTION 1927 NORTH AMERICAN DATUM

LEGEND ROAD DATA 1940. Table listing symbols for road types (e.g., hard surface, heavy duty road; loose surface, graded, dry-weather road), railroads (e.g., standard gauge, narrow gauge), and boundaries (e.g., international, state, county).



APPROXIMATE MEAN DECLINATION, 1941

REPRINTED FROM MILITARY EDITION FOR CIVIL USE 1952 SOLD AND DISTRIBUTED BY U. S. GEOLOGICAL SURVEY, WASHINGTON 25, D. C.

U.S.G.S. FILE COPY Inspection and Mating.

SOUTH MILLS, NORTH CAROLINA N3615-W7615/15