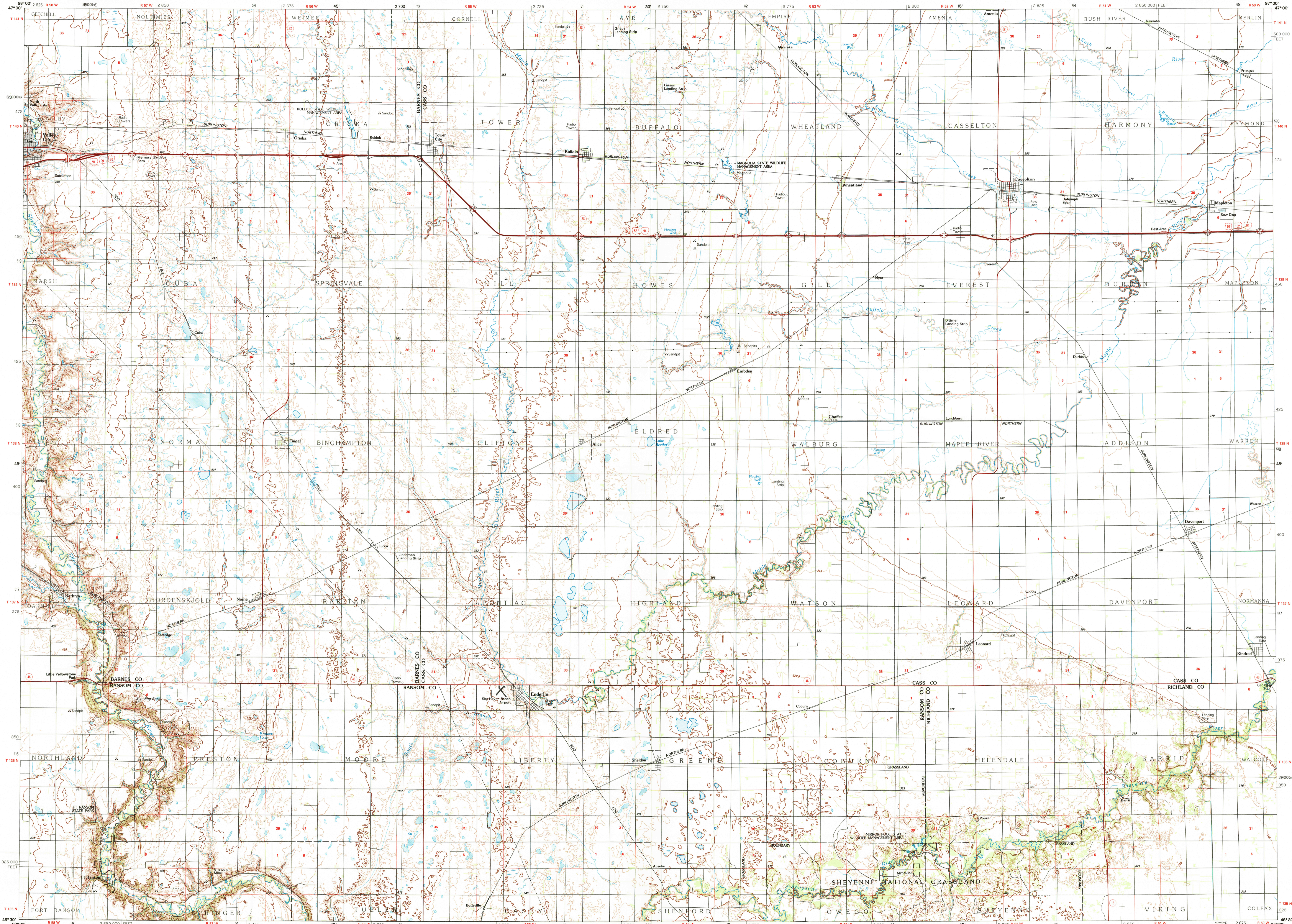


CASSETON, NORTH DAKOTA

30x60 MINUTE SERIES (TOPOGRAPHIC)



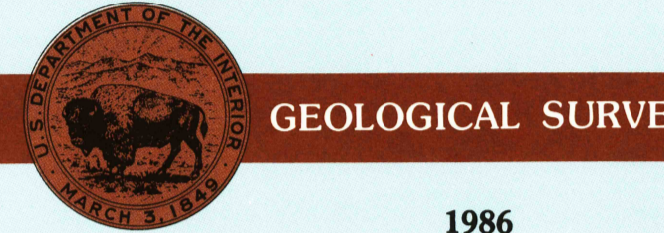
Casselton NORTH DAKOTA

1:100 000-scale metric topographic map



30 X 60 MINUTE QUADRANGLE SHOWING

- Contours and elevations in meters
- Highways, roads and other manmade structures
- Water features
- Woodland areas
- Geographic names



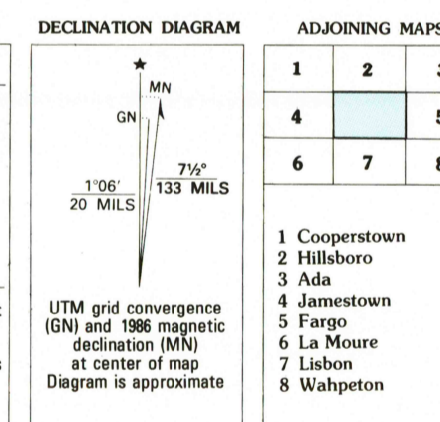
Produced by the United States Geological Survey
 Compiled from USGS 1:24 000-scale topographic maps dated 1959-1976. Planimetry revised from aerial photographs taken 1984 and other source data. Revised information not field checked. Map edited 1986.
 Projection and 10 000-meter grid, zone 14, Universal Transverse Mercator
 25 000-foot grid ticks based on North Dakota coordinate system, south zone
 1927 North American Datum
 To place on the predicted North American Datum 1983, move the projection lines 6 meters north and 28 meters east
 There may be private inholdings within the boundaries of the National or State reservations shown on this map

CONTOUR INTERVAL 5 METERS
 SUPPLEMENTARY CONTOUR INTERVAL 2.5 METERS
 NATIONAL GEODETIC VERTICAL DATUM OF 1929
 ELEVATIONS SHOWN TO THE NEAREST METER

THIS MAP COMPLES WITH NATIONAL MAP ACCURACY STANDARDS

Meters	Feet
1	3.2808
2	6.5617
3	9.8425
4	13.1234
5	16.4042
6	19.6850
7	22.9659
8	26.2467
9	29.5275
10	32.8084

To convert meters to feet multiply by 3.2808
 To convert feet to meters multiply by 0.3048



Adjoining Maps	1	2	3
4	5	6	7
8			

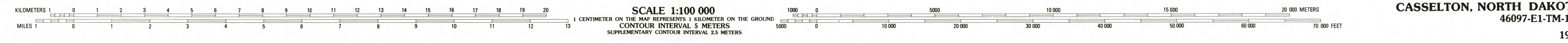
1 Cooperstown
 2 Hillsboro
 3 Ada
 4 Jamestown
 5 Fargo
 6 La Motre
 7 Lisbon
 8 Wahpeton

FOR SALE BY U.S. GEOLOGICAL SURVEY
 DENVER, COLORADO 80225, OR RESTON, VIRGINIA 22092
 SEP 2 1 1988
 REC'D FILE COPY

Topographic Map Symbols

- Primary highway, hard surface
- Secondary highway, hard surface
- Light duty road, principal street, hard or improved surface
- Other road or street, trail
- Route marker: Interstate, U.S. State
- Railroad: standard gage, narrow gage
- Bridge: overpass, underpass
- Tunnel: road, railroad
- Built up area, locality, elevation
- Airport, landing field, landing strip
- National boundary
- County boundary
- National or State reservation boundary
- Land grant boundary
- U.S. public lands survey: range, township, section
- Range, township, section line: protracted
- Power transmission line: pipeline
- Dam, dam with lock
- Cemetery, building
- Windmill, water well, spring
- Minor shaft, art or cave, mine, quarry, gravel pit
- Campground, picnic area, U.S. location monument
- Ruin; cliff dwelling
- Distorted surface: strip mine, lava, sand
- Contours: index, intermediate, supplementary
- Bathymetric contours: index, intermediate
- Stream, lake: perennial, intermittent
- Rapids, large and small; falls, large and small
- Area to be submerged; marsh, swamp
- Land subject to controlled inundation; woodland
- Scrub; mangrove
- Orchard; vineyard

A pamphlet describing topographic maps is available on request



CASSETON, NORTH DAKOTA
 46097-E1-TM-10
 1986