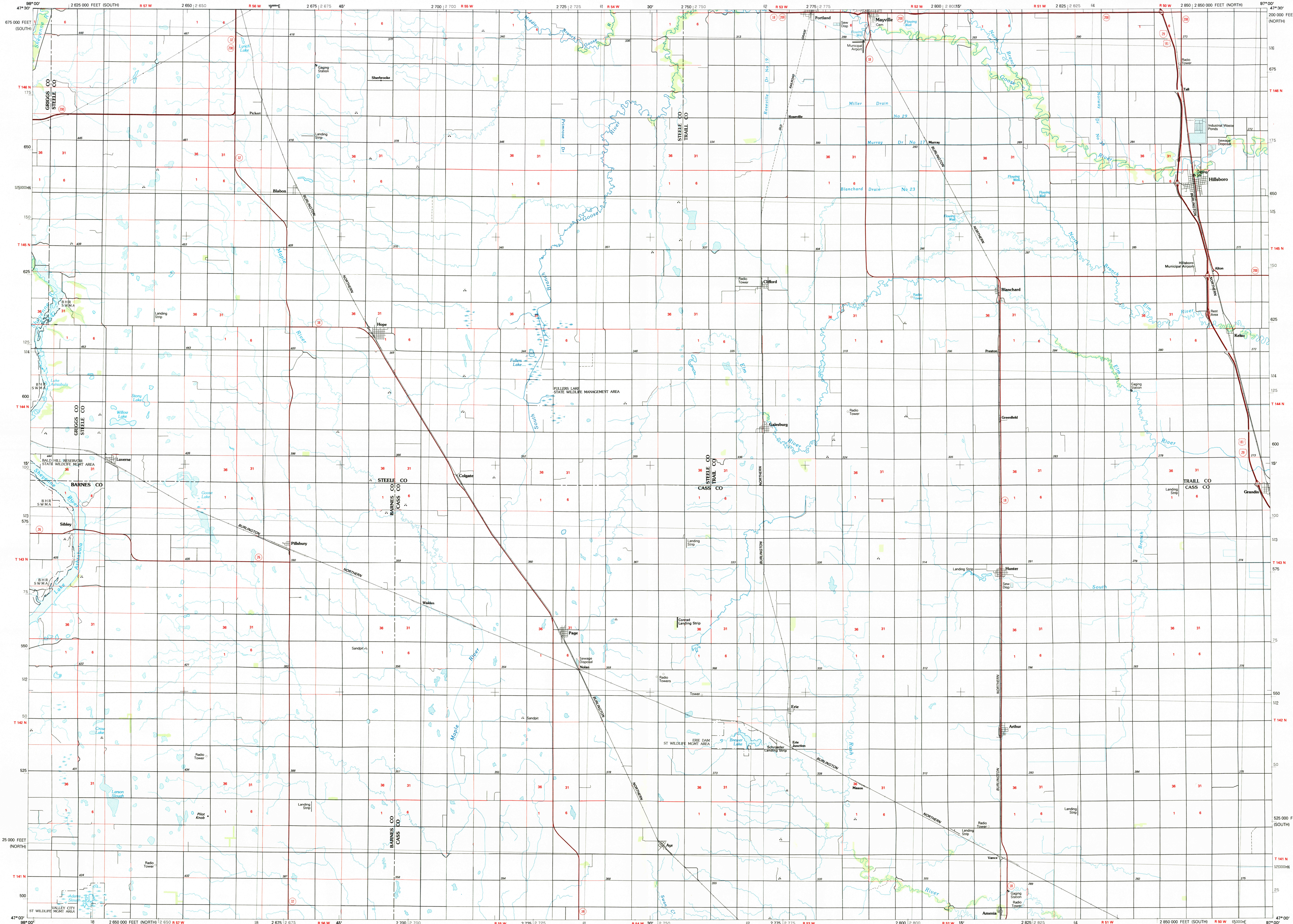


HILLSBORO, NORTH DAKOTA

30 X 60 MINUTE SERIES (PLANIMETRIC)



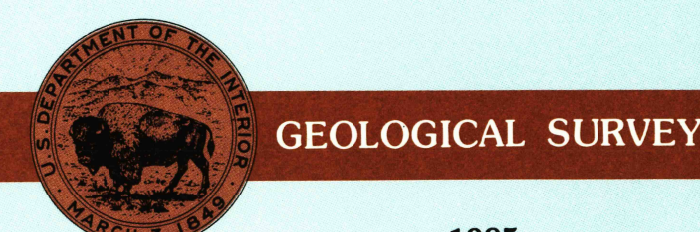
Hillsboro NORTH DAKOTA

1:100 000-scale planimetric map



30 X 60 MINUTE QUADRANGLE SHOWING

- Elevations in meters
- Highways, roads and other manmade structures
- Water features
- Woodland areas
- Geographic names



1985

Produced by the United States Geological Survey  
 Compiled from USGS 1:24 000-scale topographic maps dated 1963-1984. Planimetry revised from aerial photographs taken 1981 and other source data. Revised information not field checked. Map edited 1985  
 Projection and 10 000-meter grid, zone 14, Universal Transverse Mercator  
 25 000-foot grid ticks based on North Dakota coordinate system, north and south zones  
 1927 North American Datum  
 To place on the predicted North American Datum 1983, move the projection lines 6 meters north and 27 meters east  
 There may be private inholdings within the boundaries of the National or State reservations shown on this map

NATIONAL GEODETIC VERTICAL DATUM OF 1929 ELEVATIONS SHOWN TO THE NEAREST METER

THIS MAP COMPLIES WITH NATIONAL MAP ACCURACY STANDARDS

Meters	Feet	DECLINATION DIAGRAM	ADJOINING MAPS
1	3.2808		1 Stump Lake
2	6.5617		2 Grand Forks
3	9.8425		3 Crookston
4	13.1234		4 Cooperstown
5	16.4042		5 Ada
6	19.6850		6 Jamestown
7	22.9659		7 Casselton
8	26.2467		8 Fargo
9	29.5275		
10	32.8084		

To convert meters to feet multiply by 3.2808  
 To convert feet to meters multiply by 0.3048  
 UTM grid convergence (GN) and 1983 magnetic declination (M) at center of map. Diagram is approximate.

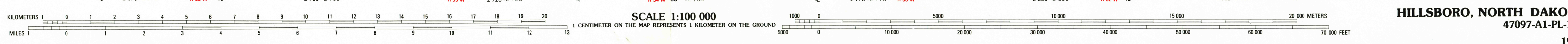
FOR SALE BY U.S. GEOLOGICAL SURVEY DENVER, COLORADO 80225, OR RESTON, VIRGINIA 22092

Topographic Map Symbols

- Primary highway, hard surface
- Secondary highway, hard surface
- Light duty road, principal street, hard or improved surface
- Other road or street, trail
- Route marker: Interstate, U.S., State
- Railroad: standard gage; narrow gage
- Bridge; overpass; underpass
- Tunnel: road, railroad
- Built up area, locality, elevation
- Airport; landing field; landing strip
- National boundary
- State boundary
- County boundary
- National or State reservation boundary
- Land grant boundary
- U.S. public lands survey: range, township, section
- Range, township, section line: protracted
- Power transmission line; pipeline
- Dam; dam with lock
- Canal; building
- Windmill; water well; spring
- Mine shaft; edit or cave; mine, quarry; gravel pit
- Campground; picnic area; U.S. location monument
- Ruins; cliff dwelling
- Distorted surface: strip mine, lava, sand
- Contours: index; intermediate; supplementary
- Bathymetric contours: index; intermediate
- Stream, lake, perennial, intermittent
- Rapids, large and small; falls, large and small
- Area to be submerged; marsh, swamp
- Land subject to controlled inundation; woodland
- Scrub; mangrove
- Orchard; vineyard

RETURN TO: USGS AND HISTORICAL MAP ARCHIVES

A pamphlet describing topographic maps is available on request



HILLSBORO, NORTH DAKOTA 47097-A1-PL-100 1985