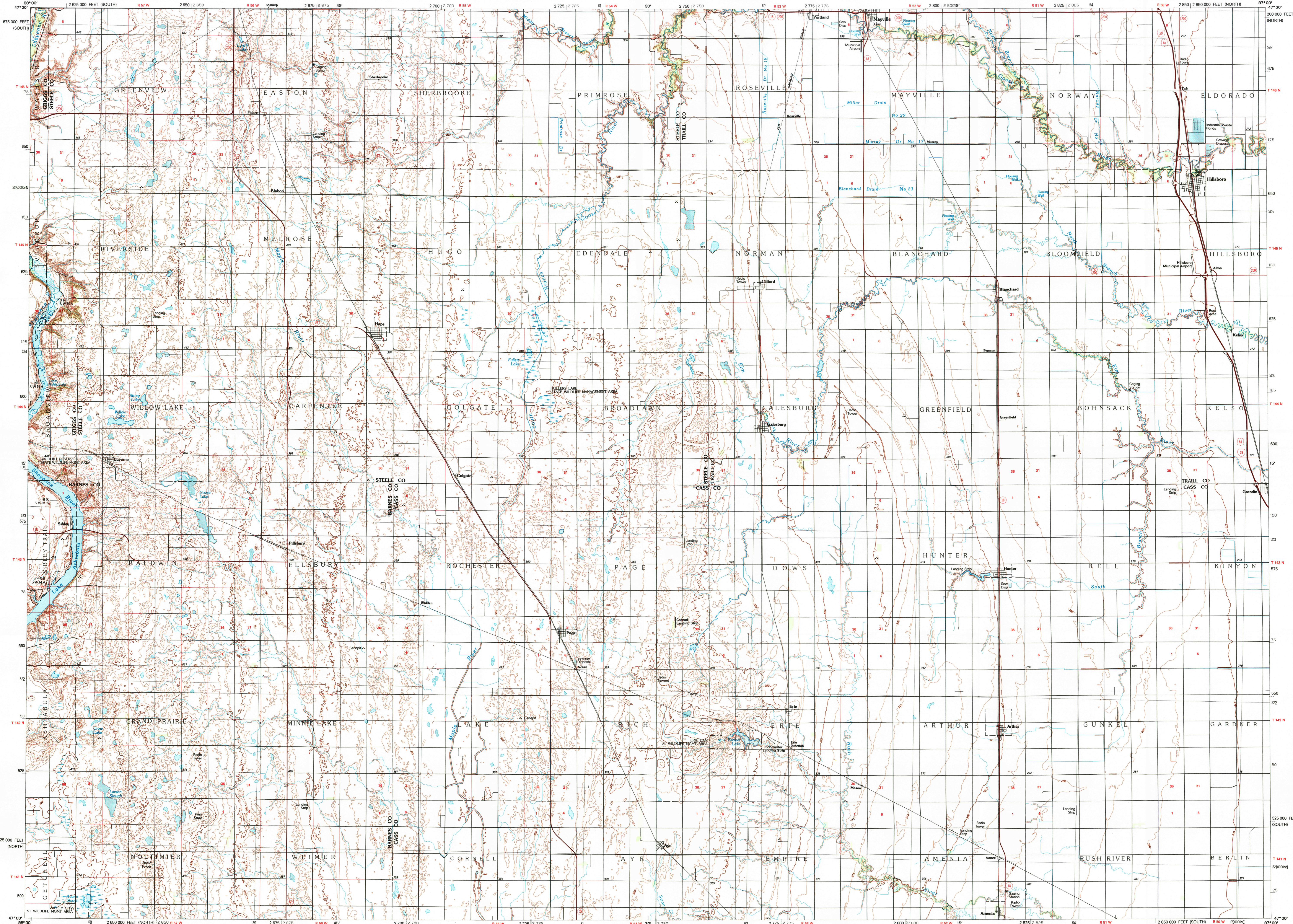


HILLSBORO, NORTH DAKOTA

30 X 60 MINUTE SERIES (TOPOGRAPHIC)



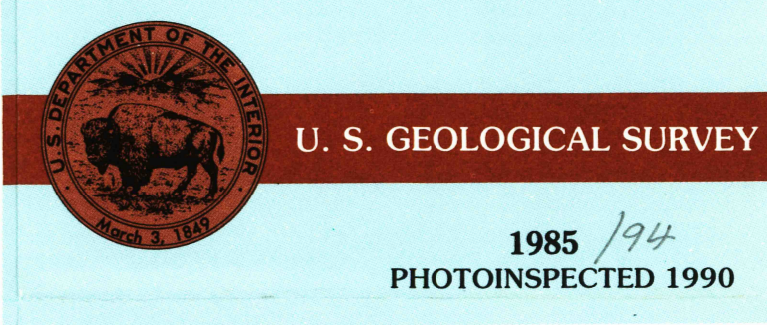
Hillsboro NORTH DAKOTA

1:100 000-scale metric topographic map



30 X 60 MINUTE QUADRANGLE SHOWING

- Contours and elevations in meters
- Highways, roads and other manmade structures
- Water features
- Woodland areas
- Geographic names



1985 PHOTOINSPECTED 1990

Produced by the United States Geological Survey
 Compiled from USGS 1:24 000-scale topographic maps dated 1963-1984. Planimetry revised from aerial photographs taken 1981 and other source data. Revised information not field checked. Map edited 1985
 1927 North American Datum (NAD 27). Projection and 10 000-meter grid: Universal Transverse Mercator, zone 14
 25 000-foot ticks: North Dakota coordinate system, north and south zones
 The difference between NAD 27 and North American Datum of 1983 (NAD 83) is too small to show at this scale. The values of the shift between the datums for 7.5-minute intersections are given in USGS Bulletin 1875
 There may be private holdings within the boundaries of the National or State reservations shown on this map
 Map photospectored using 1990 photographs
 No major culture or drainage changes found

CONTOUR INTERVAL 5 METERS
 NATIONAL GEODETIC VERTICAL DATUM OF 1929
 ELEVATIONS SHOWN TO THE NEAREST METER

THIS MAP COMPLIES WITH NATIONAL MAP ACCURACY STANDARDS

CONVERSION TABLE		DECLINATION DIAGRAM		ADJOINING MAPS		
Meters	Feet	1°M	75°W	1	2	3
1	3.2808			4	5	
2	6.5617			6	7	8
3	9.8425			1	2	3
4	13.1234			4	5	
5	16.4042			7	8	
6	19.6850			1	2	3
7	22.9659			4	5	
8	26.2467			7	8	
9	29.5275			1	2	3
10	32.8084			4	5	

FOR SALE BY U.S. GEOLOGICAL SURVEY
 DENVER, COLORADO 80225, OR RESTON, VIRGINIA 22092

Topographic Map Symbols

- Primary highway, hard surface
- Secondary highway, hard surface
- Light duty road, principal street, hard or improved surface
- Other road or street; trail
- Route marker: Interstate, U.S.; State
- Railroad: standard gage, narrow gage
- Bridge, overpass, underpass
- Tunnel; road, railroad
- Build-up; locality, elevation
- Airport; landing field; landing strip
- National boundary
- State boundary
- County boundary
- Civil township boundary
- National or State reservation boundary
- Land grant boundary: range, township, section
- U.S. public lands survey: range, township, section
- Range, township, section line: protracted
- Power transmission line; pipeline
- Dam; dam with lock
- Windmill; water well; spring
- Mine shaft; adit or cave; mine, quarry; gravel pit
- Campground; picnic area; U.S. location monument
- Ruin; cliff dwelling
- Disturbed surface: strip mine, lava, sand
- Contours: index, intermediate, supplementary
- Bathymetric contours: index, intermediate
- Stream, lake: perennial, intermittent
- Rapids, large and small; falls, large and small
- Area to be submerged; marsh, swamp
- Land subject to controlled inundation; woodland
- Scrub; mangrove
- Orchard; vineyard

A pamphlet describing topographic maps is available on request