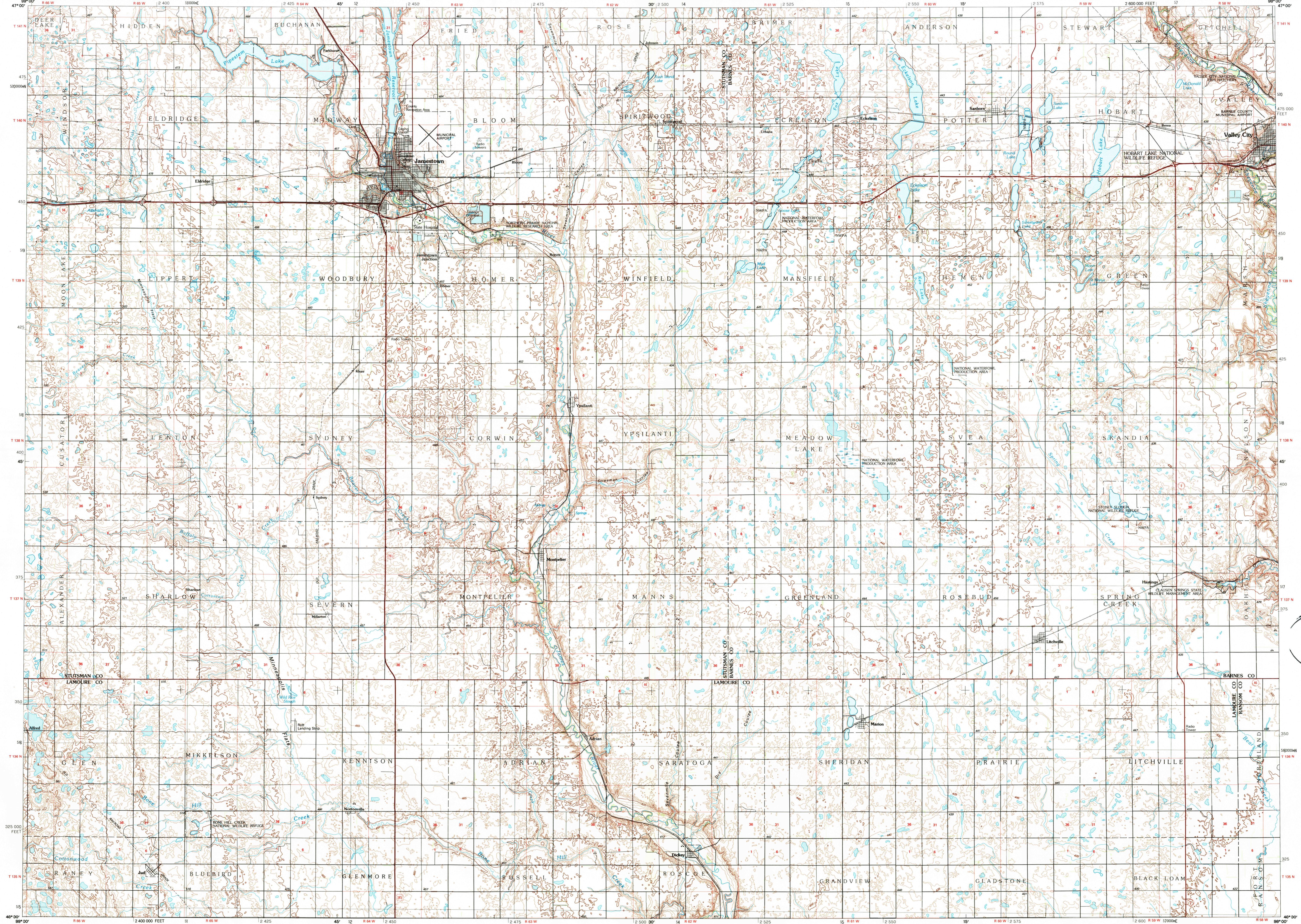


JAMESTOWN, NORTH DAKOTA

30 X 60 MINUTE SERIES (TOPOGRAPHIC)



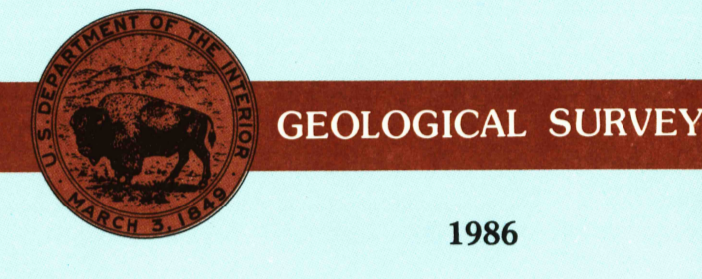
Jamestown NORTH DAKOTA

1:100 000-scale metric
topographic map



30 X 60 MINUTE QUADRANGLE
SHOWING

- Contours and elevations in meters
- Highways, roads and other manmade structures
- Water features
- Woodland areas
- Geographic names



Produced by the United States Geological Survey
 Compiled from USGS 1:24 000-scale topographic maps dated 1951-1975. Planimetry revised from aerial photographs taken 1983 and other source data. Revised information not field checked. Map edited 1986.
 Projection and 10 000-meter grid, zone 14.
 Universal Transverse Mercator
 25 000-foot grid ticks based on North Dakota coordinate system, south zone
 1927 North American Datum
 To place on the predicted North American Datum 1983, move the projection lines 6 meters north and 39 meters east.
 There may be private inholdings within the boundaries of the National or State reservations shown on this map.

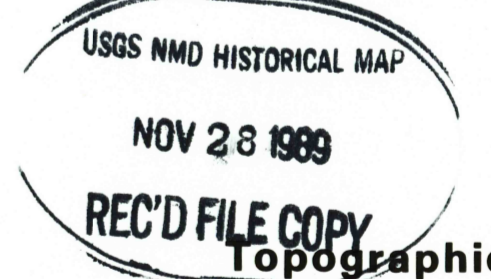
CONTOUR INTERVAL 5 METERS
 NATIONAL GEODETIC VERTICAL DATUM OF 1929
 ELEVATIONS SHOWN TO THE NEAREST METER

THIS MAP COMPLIES WITH NATIONAL MAP ACCURACY STANDARDS

CONVERSION TABLE		DECLINATION DIAGRAM	ADJOINING MAPS		
Meters	Feet		1	2	3
1	3.2808		1	4	3
2	6.5616		4	5	
3	9.8424		5	6	8
4	13.1232				
5	16.4040				
6	19.6848				
7	22.9656				
8	26.2464				
9	29.5272				
10	32.8080				

1 Carrington
 2 Cooperstown
 3 Hillsboro
 4 Steele
 5 Casselton
 6 Wishek
 7 LaMoure
 8 Lisbon

FOR SALE BY U.S. GEOLOGICAL SURVEY
 DENVER, COLORADO 80225, OR RESTON, VIRGINIA 22092



Symbol	Description
	Primary highway, hard surface
	Secondary highway, hard surface
	Light duty road, principal street, hard or improved surface
	Other road or street, trail
	Road marker: Interstate, U.S. State
	Railroad: standard gage, narrow gage
	Bridge: overpass, underpass
	Tunnel: road, railroad
	Built up area, locality, elevation
	Airport: landing field, landing strip
	National boundary
	State boundary
	County boundary
	National or State reservation boundary
	Land grant boundary
	U.S. public lands survey: range, township, section
	Range, township, section line: protracted
	Power transmission line, pipeline
	Dam, dam with lock
	Cemetery: building
	Windmill; water well; spring
	Mine shaft; adit or cave; mine, quarry; gravel pit
	Campground; picnic area; U.S. location monument
	Ruins; cliff dwelling
	Distorted surface: strip mine, lava, sand
	Contours: index, intermediate, supplementary
	Bathymetric contours: index, intermediate
	Stream, lake: perennial, intermittent
	Rapids, large and small; falls, large and small
	Area to be submerged; marsh, swamp
	Land subject to controlled inundation; woodland
	Scrub; mangrove
	Orchard; vineyard

A pamphlet describing topographic maps is available on request