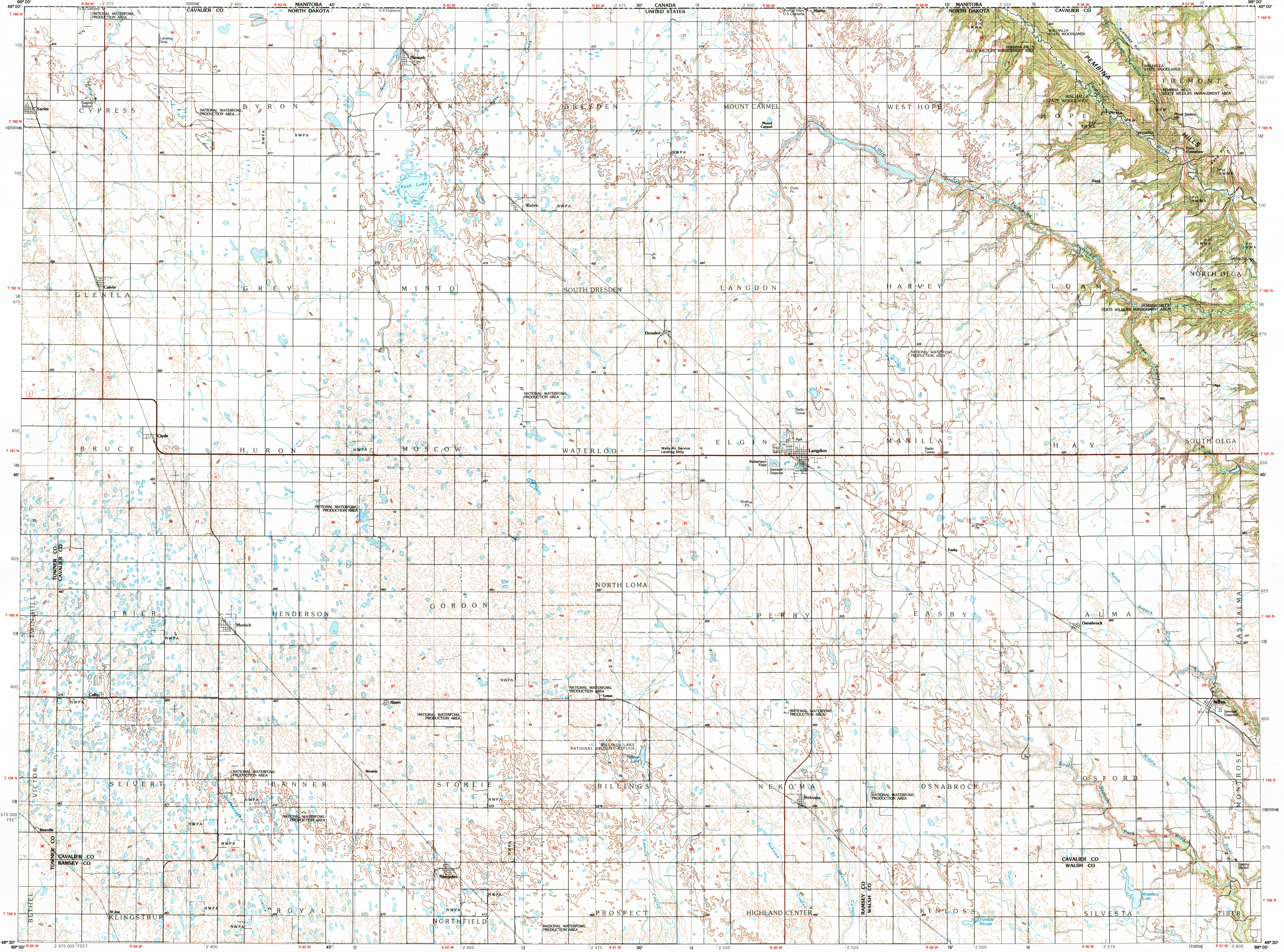


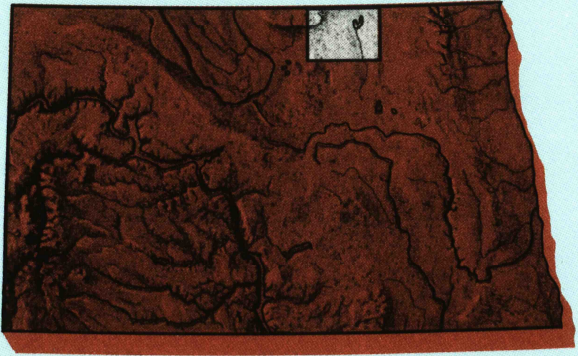
LANGDON, NORTH DAKOTA

30 X 60 MINUTE SERIES (TOPOGRAPHIC)



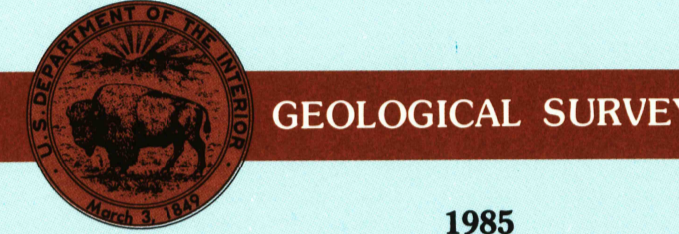
Langdon NORTH DAKOTA

1:100 000-scale metric
topographic map



30 X 60 MINUTE QUADRANGLE
SHOWING

- Contours and elevations in meters
- Highways, roads and other manmade structures
- Water features
- Woodland areas
- Geographic names



1985
PHOTOINSPECTED 1990

Produced by the United States Geological Survey
 Compiled from USGS 1:24 000-scale topographic maps dated 1967-1983. Planimetry revised from aerial photographs taken 1981-82 and other source data. Revised information not field checked. Map edited 1985
 Projection and 10 000-meter grid, zone 14, Universal Transverse Mercator
 25 000-foot grid ticks based on North Dakota coordinate system, north zone
 1927 North American Datum
 To place on the predicted North American Datum 1983, move the projection lines 3 meters north and 28 meters east
 There may be private inholdings within the boundaries of the National or State reservations shown on this map
 Map photoinspected using 1990 photographs
 No major culture or drainage changes found

CONTOUR INTERVAL 5 METERS
 NATIONAL GEODETIC VERTICAL DATUM OF 1929
 ELEVATIONS SHOWN TO THE NEAREST METER

THIS MAP COMPLIES WITH NATIONAL MAP ACCURACY STANDARDS

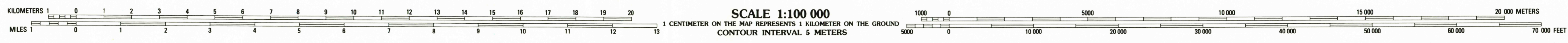
CONVERSION TABLE		DECLINATION DIAGRAM		ADJOINING MAPS		
Meters	Feet	MAGNETIC		1	2	3
1	3.2808	0°23'		4	5	6
2	6.5617	15'		7	8	
3	9.8425	7 MILES		1	2	3
4	13.1234	UTM grid convergence		4	5	6
5	16.4042	(GM) and 1983 magnetic		7	8	9
6	19.6850	declination (MN)		10		
7	22.9659	at center of map				
8	26.2467	Diagram is approximate				
9	29.5276					
10	32.8084					

FOR SALE BY U.S. GEOLOGICAL SURVEY
 DENVER, COLORADO 80225, OR RESTON, VIRGINIA 22092

Topographic Map Symbols

- Primary highway, hard surface
- Secondary highway, hard surface
- Light duty road, principal street, hard or improved surface
- Other road or street, trail
- Route marker: Interstate, U.S., State
- Railroad: standard gage; narrow gage
- Bridge: overpass; underpass
- Tunnel: road; railroad
- Built up area; locality; elevation
- Airport; landing field; landing strip
- National boundary
- State boundary
- County boundary
- National or State reservation boundary
- Land grant boundary
- U.S. public lands survey: range, township, section
- Range, township, section line: protected
- Power transmission line; pipeline
- Dam; dam with lock
- Cemetery; building
- Wellhead; water well; spring
- Mon shaft; adit or cave; mine, quarry; gravel pit
- Campground; picnic area; U.S. location monument
- Ruin; cliff dwelling
- Distorted surface: strip mine, lava, sand
- Contours: index; intermediate; supplementary
- Bathymetric contours: index; intermediate
- Stream, lake: perennial; intermittent
- Rapids; large and small; falls, large and small
- Area to be submerged; marsh; swamp
- Land subject to controlled inundation; woodland
- Scrub; mangrove
- Orchard; vineyard

A pamphlet describing topographic maps is available on request



LANGDON, NORTH DAKOTA
 48098-E1-TM-100
 1985
 PHOTOINSPECTED 1990

USGS Library
 Reston, VA
 Topo Archive