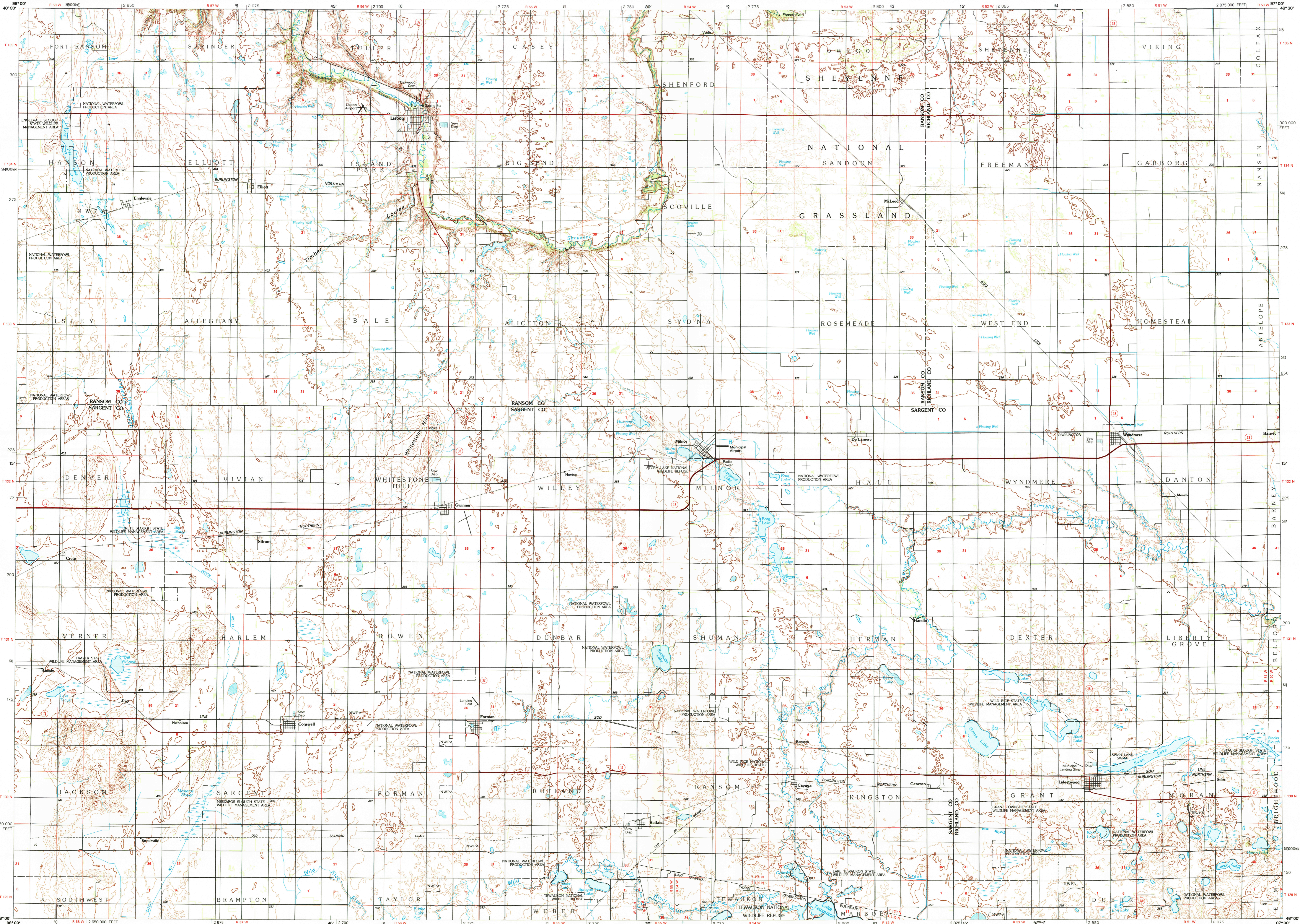


LISBON, NORTH DAKOTA

30 X 60 MINUTE SERIES (TOPOGRAPHIC)



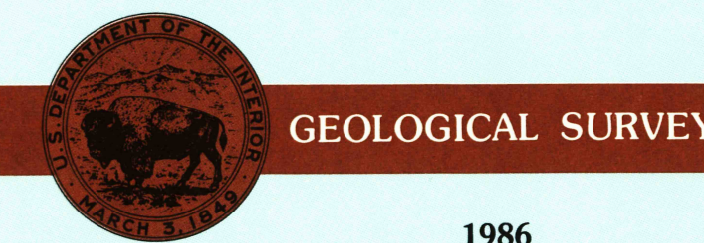
Lisbon NORTH DAKOTA

1:100 000-scale metric topographic map



30 X 60 MINUTE QUADRANGLE SHOWING

- Contours and elevations in meters
- Highways, roads and other manmade structures
- Water features
- Woodland areas
- Geographic names



Produced by the United States Geological Survey  
 Compiled from USGS 1:24 000-scale topographic maps dated 1952-1979. Planimetry revised from aerial photographs taken 1984 and other source data. Revised information not field checked. Map edited 1986  
 Projection and 10 000-meter grid, zone 14, Universal Transverse Mercator  
 25 000-foot grid ticks based on North Dakota coordinate system, south zone  
 1927 North American Datum  
 To place on the predicted North American Datum 1983, move the projection lines 7 meters north and 29 meters east  
 There may be private inholdings within the boundaries of the National or State reservations shown on this map

CONTOUR INTERVAL 5 METERS  
 SUPPLEMENTARY CONTOUR INTERVAL 2.5 METERS  
 NATIONAL GEODETIC VERTICAL DATUM OF 1929  
 ELEVATIONS SHOWN TO THE NEAREST METER

THIS MAP COMPLIES WITH NATIONAL MAP ACCURACY STANDARDS

CONVERSION TABLE		DECLINATION DIAGRAM		ADJOINING MAPS	
Meters	Feet	Magnetic declination		1	2
1	3.2808	1986		3	4
2	6.5617	1987		5	6
3	9.8425	1988		7	8
4	13.1234	1989			
5	16.4042	1990			
6	19.6850	1991			
7	22.9659	1992			
8	26.2467	1993			
9	29.5275	1994			
10	32.8084	1995			

To convert meters to feet multiply by 3.2808  
 To convert feet to meters multiply by 0.3048

UTM grid convergence (GM) and 1986 magnetic declination (MD) at center of map  
 Diagram is approximate

ADJOINING MAPS	1	2	3	4	5	6	7	8
1	Jamestown							
2	Cassidian							
3	Fargo							
4	La Moure							
5	Wahpeton							
6	Elm River							
7	Sisseton							
8	Wheaton							

FOR SALE BY U.S. GEOLOGICAL SURVEY  
 DENVER, COLORADO 80225, OR RESTON, VIRGINIA 22092  
 USGS HISTORICAL MAP  
 SEP 21 1988  
 REC'D FILE COPY

Topographic Map Symbols

Primary highway, hard surface	Secondary highway, hard surface	Light duty road, principal street, hard or improved surface	Other road or street, trail	Route marker: Interstate, U.S., State	Railroad: standard gauge, narrow gauge	Bridge: overpass, underpass	Tunnel: road, railroad	Built up area; locality; elevation	Airport; landing field; landing strip	National boundary	State boundary	County boundary	National or State reservation boundary	Land grant boundary	U.S. public lands survey: range, township, section	Range, township, section line: protracted	Power transmission line: pipeline	Dam: dam with lock	Cemetery, building	Wells: water well; spring	Mine shaft; adit or cave; mine, quarry, gravel pit	Campground; picnic area; U.S. location monument	Ruins; cliff dwelling	Distorted surface: strip mine, lava, sand	Contours: index; intermediate; supplementary	Bathymetric contours: index, intermediate	Stream: lake; perennial; intermittent	Rapids, ledge and small falls, large and small	Area to be submerged; marsh, swamp	Land subject to controlled inundation; woodland	Scrub; mangrove	Orchard; vineyard
-------------------------------	---------------------------------	---	-----------------------------	---------------------------------------	--	-----------------------------	------------------------	------------------------------------	---------------------------------------	-------------------	----------------	-----------------	--	---------------------	--	---	-----------------------------------	--------------------	--------------------	---------------------------	--	---	-----------------------	---	--	---	---------------------------------------	--	------------------------------------	---	-----------------	-------------------

A pamphlet describing topographic maps is available on request