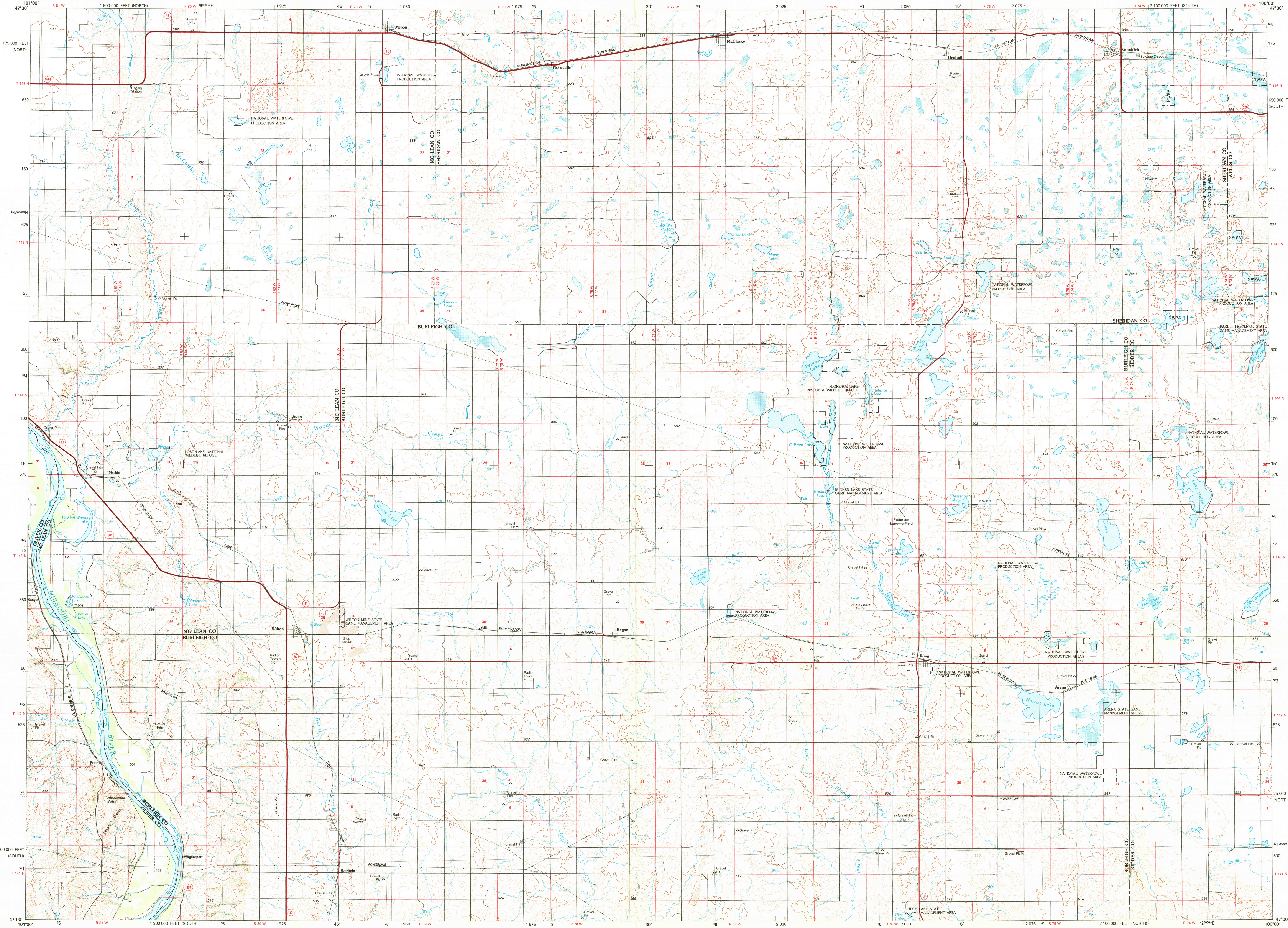


MC CLUSKY, NORTH DAKOTA

30x60 MINUTE SERIES (TOPOGRAPHIC)

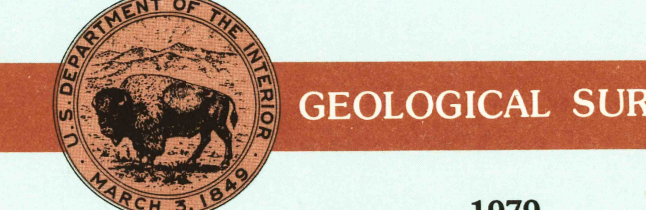


1:100 000-scale metric topographic map of **McClusky** NORTH DAKOTA



30 X 60 MINUTE QUADRANGLE SHOWING

- Contours and elevations in meters
- Highways, roads and other manmade structures
- Water features
- Woodland areas
- Geographic names



Produced by the United States Geological Survey in cooperation with the Bureau of Land Management
 Compiled from USGS 1:24 000-scale topographic maps dated 1959-1979. Planimetry revised from aerial photographs taken 1975 and other source data. Revised information not field checked. Map edited 1979.
 Projection and 10 000-meter grid, zone 14, Universal Transverse Mercator
 25 000-foot grid ticks based on North Dakota coordinate system, south and north zones 1927 North American Datum
 To place on the predicted North American Datum 1983 move the projection lines 5 meters north and 53 meters east
 There may be private inholdings within the boundaries of the National or State reservations shown on this map

CONTOUR INTERVAL 10 METERS
 NATIONAL GEODETIC VERTICAL DATUM OF 1929
 ELEVATIONS SHOWN TO THE NEAREST METER

THIS MAP COMPLIES WITH NATIONAL MAP ACCURACY STANDARDS

Meters	Feet
1	3.2808
2	6.5617
3	9.8425
4	13.1233
5	16.4042
6	19.6850
7	22.9659
8	26.2467
9	29.5275
10	32.8084

To convert meters to feet multiply by 3.2808
 To convert feet to meters multiply by 0.3048

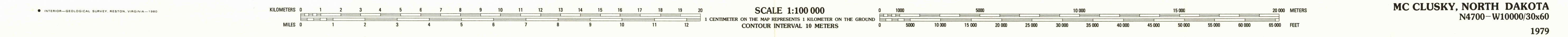
Declination Diagram	Adjoining Maps
GN 1°00'	1 Garrison
1979 magnetic declination (MN) at center of map	2 Drake
Diagram is approximate	3 New Rockford
	4 Hagen
	5 Glen Ullin
	6 Blum
	7 Blum
	8 Blum

FOR SALE BY U.S. GEOLOGICAL SURVEY, DENVER, COLORADO 8022
 OR RESTON, VIRGINIA 22092

Topographic Map Symbols

- Primary highway, hard surface
- Secondary highway, hard surface
- Light duty road, principal street, hard or improved surface
- Other road or street, trail
- Route marker: Interstate, U.S., State
- Railroad: standard gauge, narrow gauge
- Bridge: concrete, underground
- Tunnel: road, railroad
- Built up area, locality, elevation
- Airport: landing field, landing strip
- National boundary
- State boundary
- County boundary
- National or State reservation boundary
- Land grant boundary
- U.S. public lands survey: range, township, section
- Range, township; section line: protracted
- Power transmission line; pipeline
- Dam; dam with lock
- Cemetery; building
- Windmill; water well; spring
- Mine shaft; adit or cave; mine, quarry; gravel pit
- Commemorative stone area; U.S. location monument
- Ruins; cliff dwelling
- Distorted surface: strip mine, lava; sand
- Contours: index; intermediate; supplementary
- Bathymetric contours: index; intermediate
- Stream, lake: perennial; intermittent
- Rapids, large and small; falls, large and small
- Area to be submerged; marsh, swamp
- Land subject to controlled inundation; woodland
- Scrub; mangrove
- Orchard; vineyard

A pamphlet describing topographic maps is available on request



MC CLUSKY, NORTH DAKOTA
 N4700-W10000/30x60
 1979

