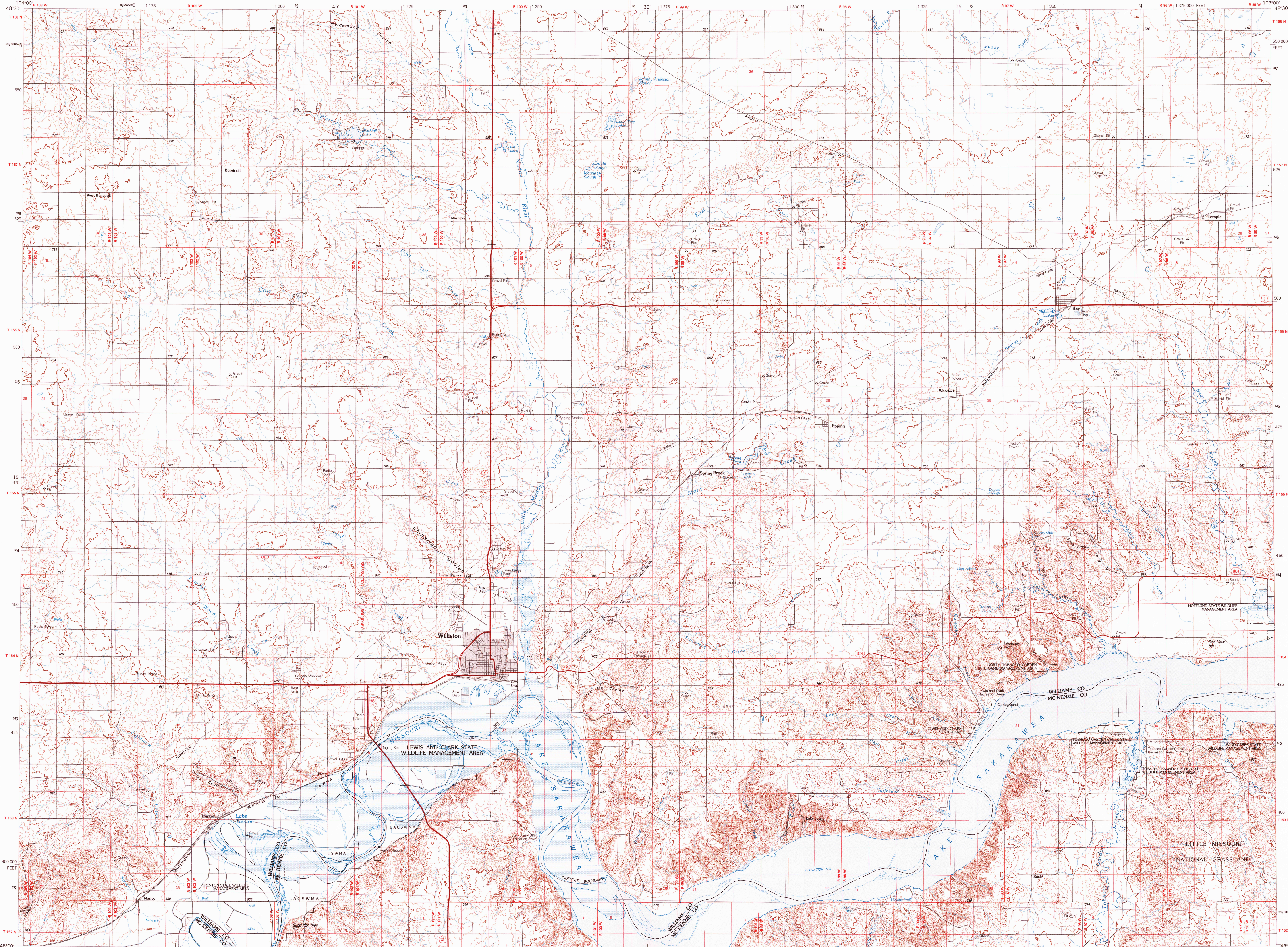


WILLISTON, NORTH DAKOTA

30 X 60 MINUTE SERIES (TOPOGRAPHIC)



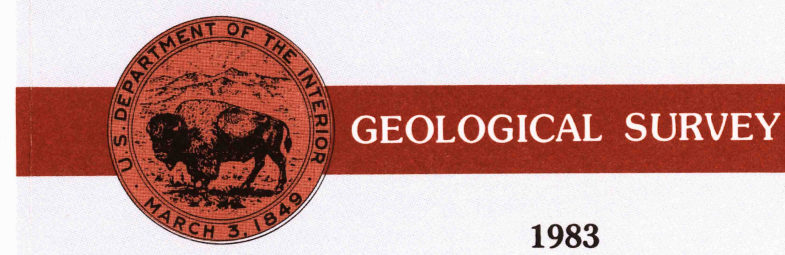
Williston NORTH DAKOTA

1:100 000-scale metric topographic map



30 X 60 MINUTE QUADRANGLE SHOWING

- Contours and elevations in meters
- Highways, roads and other manmade structures
- Water features
- Woodland areas
- Geographic names



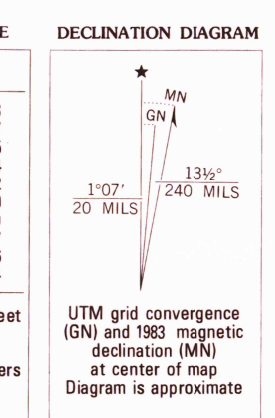
1983

Produced by the United States Geological Survey  
 Compiled from USGS 1:24 000 and 1:62 500-scale topographic maps dated 1959-1979. Planimetry revised from aerial photographs taken 1982 and other source data. Revised information not field checked. Map edited 1980.  
 Projection and 10 000-meter grid, zone 13, Universal Transverse Mercator  
 25 000-foot grid ticks based on North Dakota coordinate system, north zone  
 1927 North American Datum  
 To place on the predicted North American Datum 1983 move the projection lines 2 meters north and 36 meters east  
 There may be private inholdings within the boundaries of the National or State reservations shown on this map

CONTOUR INTERVAL 10 METERS  
 NATIONAL GEODETIC VERTICAL DATUM OF 1929  
 ELEVATIONS SHOWN TO THE NEAREST METER

THIS MAP COMPLIES WITH NATIONAL MAP ACCURACY STANDARDS

CONVERSION TABLE	
Meters	Feet
1	3.2808
2	6.5617
3	9.8425
4	13.1234
5	16.4042
6	19.6850
7	22.9659
8	26.2467
9	29.5276
10	32.8084



ADJOINING MAPS			
1	2	3	
1	2	3	
4	5	6	
7	8		

1 Plentywood  
 2 Crook  
 3 Kenmare  
 4 Colburn  
 5 Stanley  
 6 Sully  
 7 Waukegan  
 8 Marshall

FOR SALE BY U. S. GEOLOGICAL SURVEY, DENVER, COLORADO 80225  
 OR RESTON, VIRGINIA 22092

Topographic Map Symbols

- Primary highway, hard surface
- Secondary highway, hard surface
- Light duty road, principal street, hard or improved surface
- Other road or street; trail
- Route marker: Interstate; U.S. State
- Railroad: standard gage; narrow gage
- Bridge; overpass; underpass
- Tunnel; road; railroad
- Built up area; locality; elevation
- Airport; landing field; landing strip
- National boundary
- State boundary
- County boundary
- National or State reservation boundary
- Land grant boundary
- U.S. public lands survey; range, township; section
- Range, township; section line; protracted
- Power transmission line; pipeline
- Dam; dam with lock
- Cemetery; building
- Windmill; water well; spring
- Mine shaft; adit or cave; mine, quarry; gravel pit
- Campground; picnic area; U.S. location monument
- Ruin; cliff dwelling
- Distorted surface; strip mine, lava, sand
- Contours: index; intermediate; supplementary
- Bathymetric contours: index; intermediate
- Stream, lake: perennial; intermittent
- Rapids, large and small; falls, large and small
- Area to be submerged; marsh, swamp
- Land subject to controlled inundation; woodland
- Scrub; mangrove
- Orchard; vineyard

A pamphlet describing topographic maps is available on request

WILLISTON, NORTH DAKOTA  
 48103-A1-TM-100

RETURN TO:  
 USGS AND HISTORICAL MAP ARCHIVES

