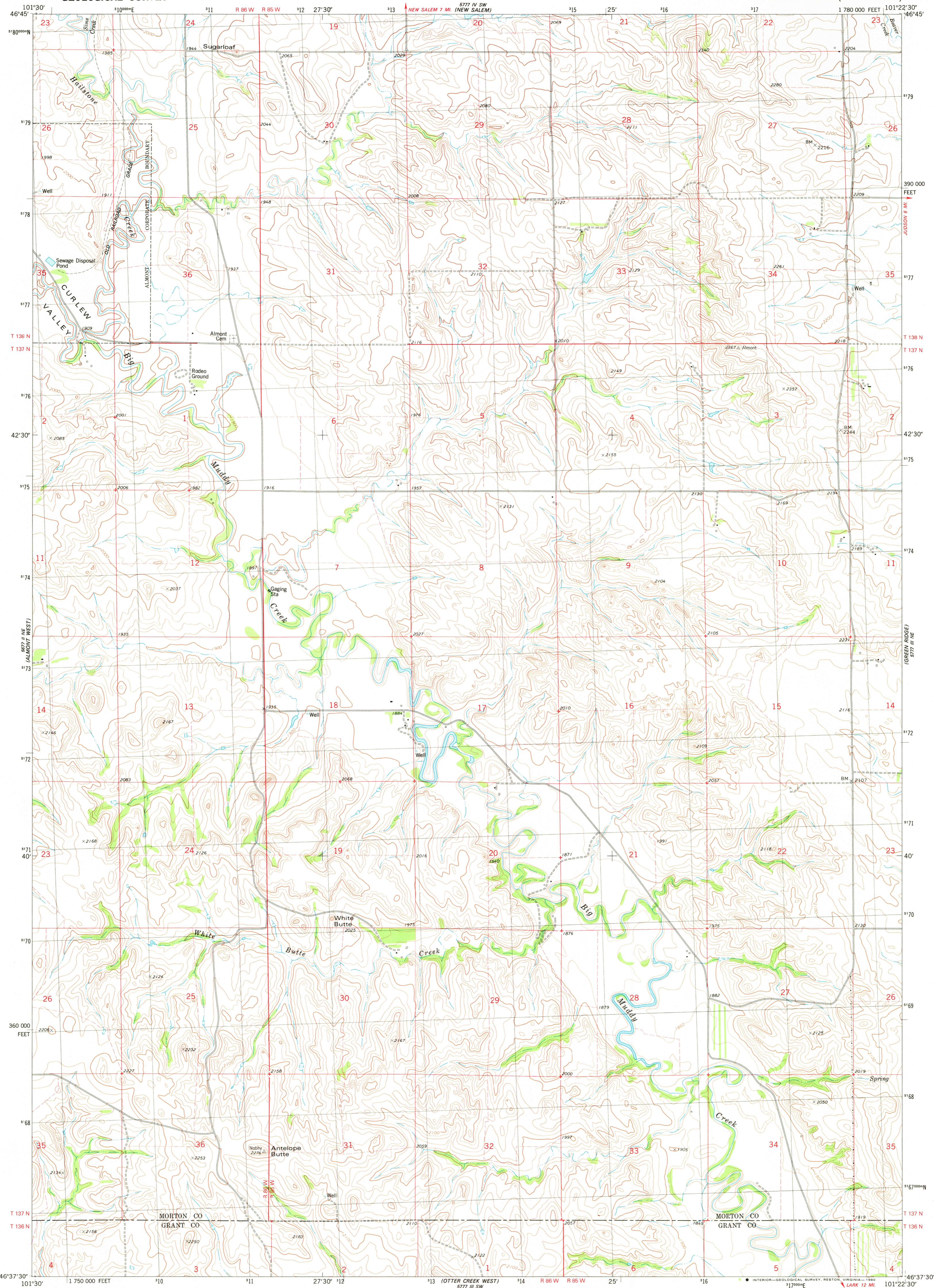


UNITED STATES  
DEPARTMENT OF THE INTERIOR  
GEOLOGICAL SURVEY

ALMONT EAST QUADRANGLE  
NORTH DAKOTA  
7.5 MINUTE SERIES (TOPOGRAPHIC)



Mapped, edited, and published by the Geological Survey

Control by USGS and NOS/NOAA

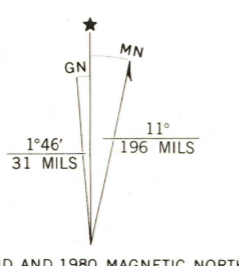
Topography by photogrammetric methods from aerial photographs taken 1974. Field checked 1975. Map edited 1980

Projection and 10,000-foot grid ticks: North Dakota coordinate system, south zone (Lambert conformal conic)

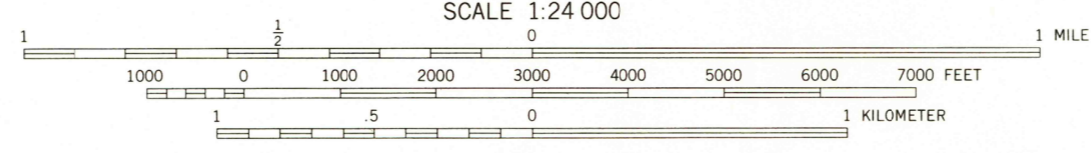
1000-meter Universal Transverse Mercator grid, zone 14 1927 North American datum

To place on the predicted North American Datum 1983 move the projection lines 5 meters north and 35 meters east as shown by dashed corner ticks

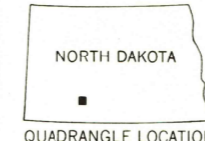
Fine red dashed lines indicate selected fence lines



UTM GRID AND 1980 MAGNETIC NORTH DECLINATION AT CENTER OF SHEET



CONTOUR INTERVAL 20 FEET  
NATIONAL GEODETIC VERTICAL DATUM OF 1929



ROAD CLASSIFICATION

Primary highway, hard surface	Light-duty road, hard or improved surface
Secondary highway, hard surface	Unimproved road
Interstate Route	U. S. Route
	State Route

THIS MAP COMPLIES WITH NATIONAL MAP ACCURACY STANDARDS  
FOR SALE BY U. S. GEOLOGICAL SURVEY, DENVER, COLORADO 80225, OR RESTON, VIRGINIA 22092  
AND BY THE STATE WATER COMMISSION, BISMARCK, NORTH DAKOTA 58501  
A FOLDER DESCRIBING TOPOGRAPHIC MAPS AND SYMBOLS IS AVAILABLE ON REQUEST

USGS  
Historical File  
Topographic Division

ALMONT EAST, N. DAK.  
N4637.5-10122.5/7.5

1980

DMA 5777 N1 NW—SERIES V871

OCT 23 1980

1900