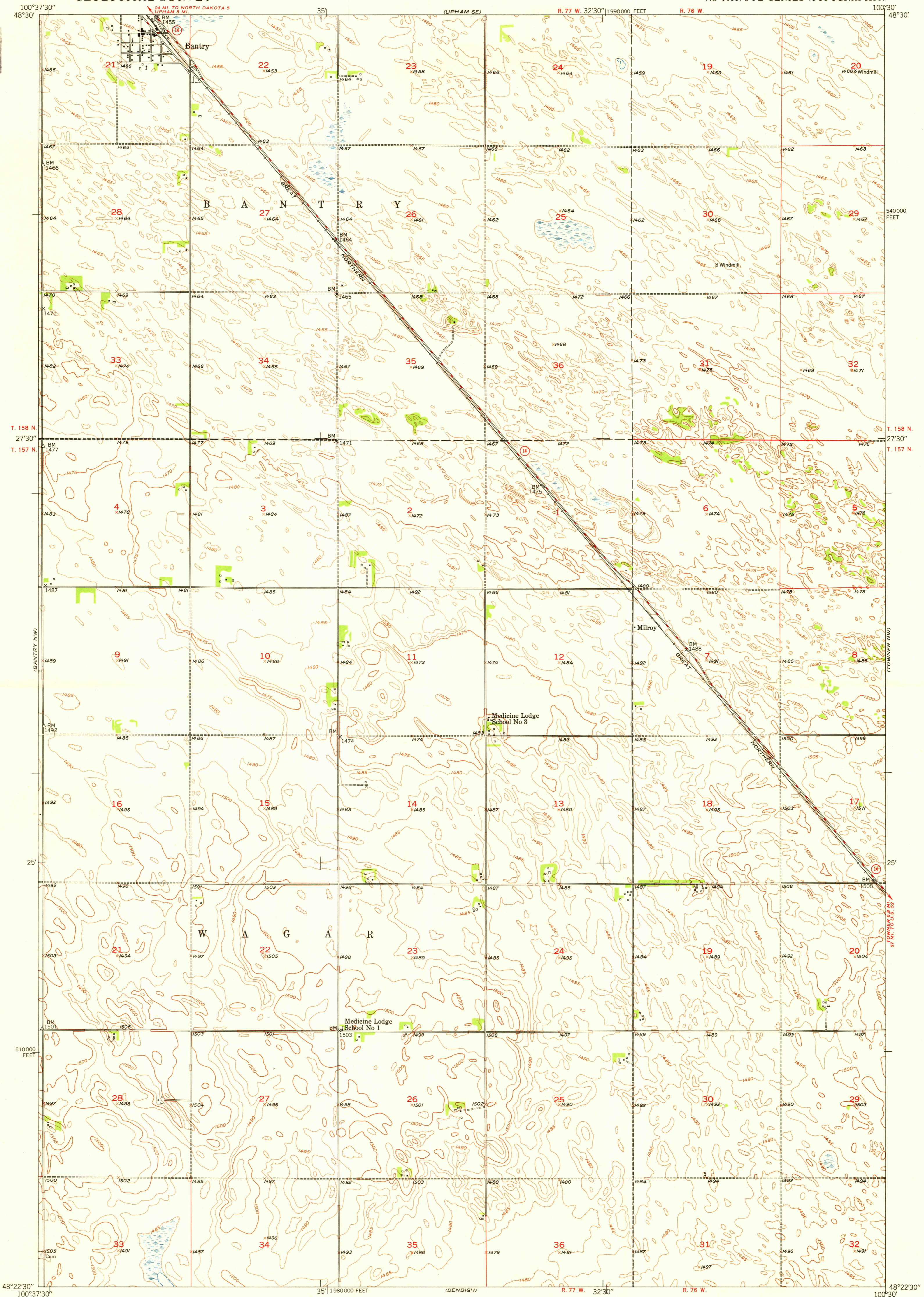
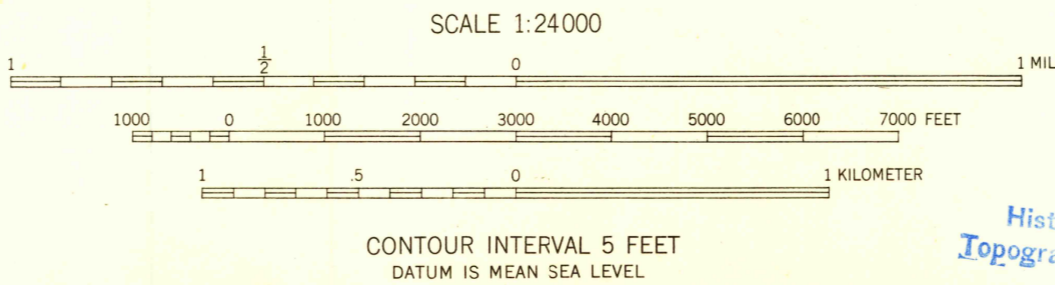


U.S.G.S.
FILE COPY
Inspection and Editing.



Mapped, edited, and published by the Geological Survey as part of the Department of the Interior program for the development of the Missouri River Basin
Control by USGS and USC&GS
Culture and drainage in part compiled from aerial photographs taken 1948
Topography by plane-table methods 1949
Polyconic projection. 1927 North American datum
10,000-foot grid based on North Dakota coordinate system, north zone

13°
TRUE NORTH
MAGNETIC NORTH
APPROXIMATE MEAN DECLINATION, 1949



ROAD CLASSIFICATION
HARD-SURFACE ALL WEATHER ROADS DRY WEATHER ROADS
Heavy-duty LANE LANE Improved dirt
Medium-duty LANE LANE Unimproved dirt
Loose-surface, graded, or narrow hard-surface
U. S. Route State Route

BANTRY, N. DAK.
N4822.5-W10030/7.5

U.S.G.S.
FILE COPY
Inspection and Editing.