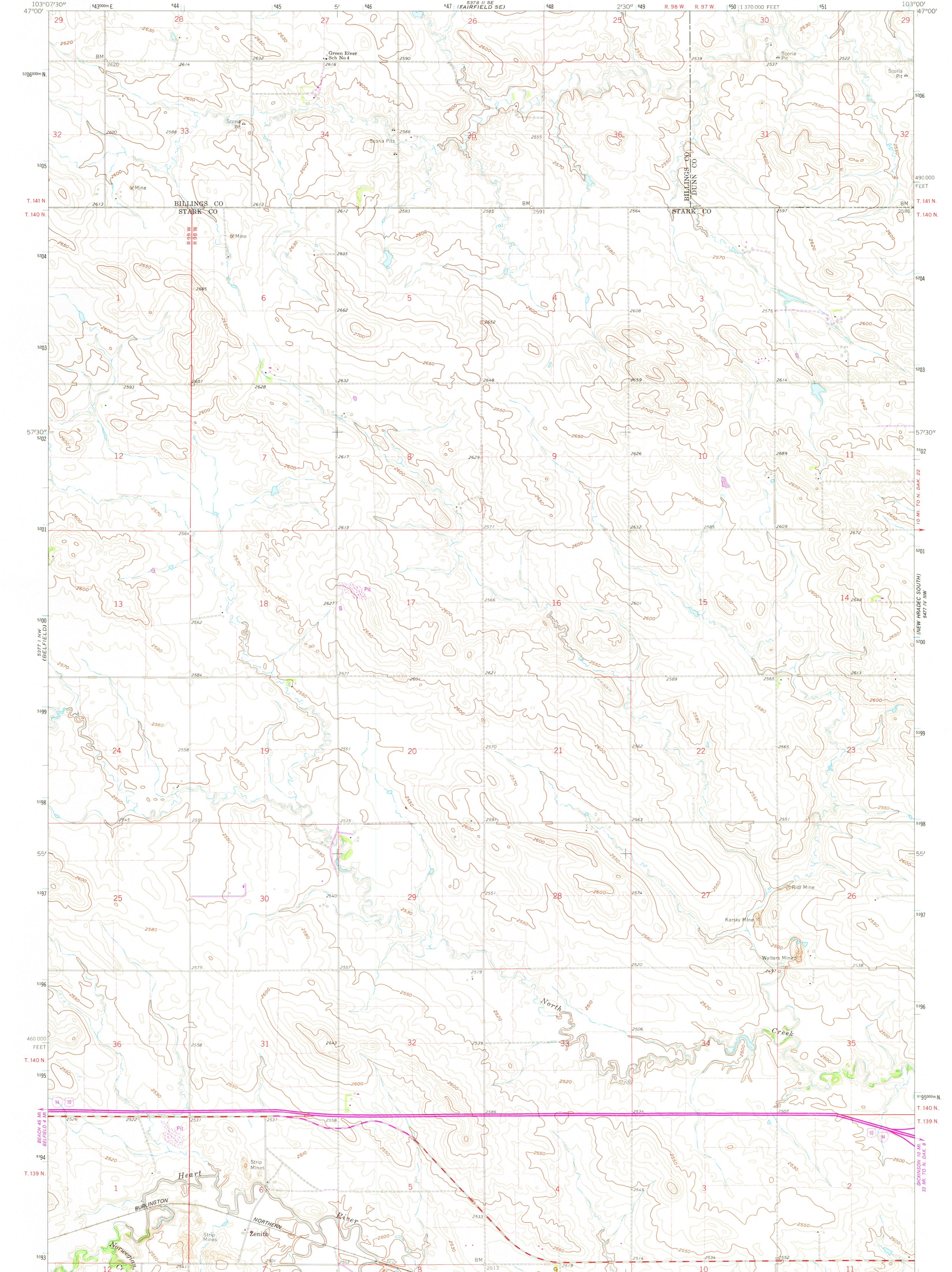
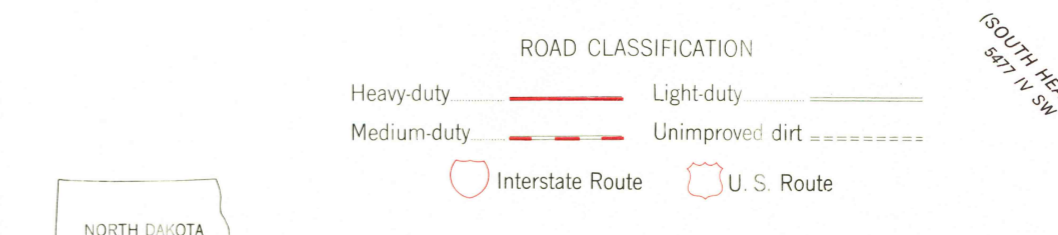
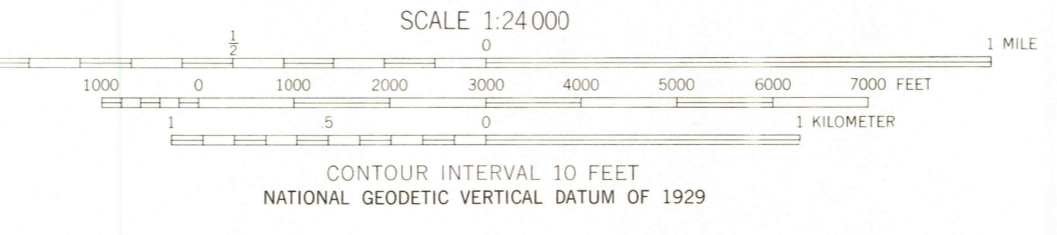
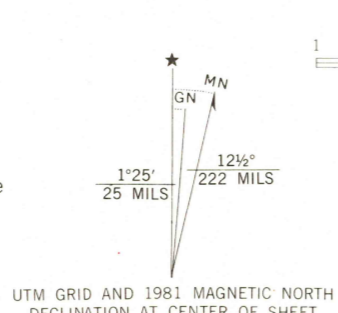


5378 1/4 SW
(FAIRFIELD SE)

5378 1/4 SW
(NEW HARBOR NORTH)



Mapped, edited, and published by the Geological Survey
Control by USGS and USC&GS
Topography by photogrammetric methods from aerial photographs taken 1960. Field checked 1962
Polyconic projection. 1927 North American datum
10,000-foot grid based on North Dakota coordinate system, south zone
1000-meter Universal Transverse Mercator grid ticks, zone 13, shown in blue
Fine red dashed lines indicate selected fence and field lines where generally visible on aerial photographs
This information is unchecked
To place on the predicted North American Datum 1983 move the projection lines 4 meters north and 38 meters east as shown by dashed corner ticks
Revisions shown in purple compiled from aerial photographs taken 1978. Map edited 1981. This information not field checked



BELFIELD NE, N. DAK.
N4652.5-W10300/7.5
1962
PHOTOREVISED 1981
DMA 5377 I NE—SERIES V871

USGS
HISTORICAL FILE
NATIONAL MAPPING DIVISION

JUL 24 1981
2100