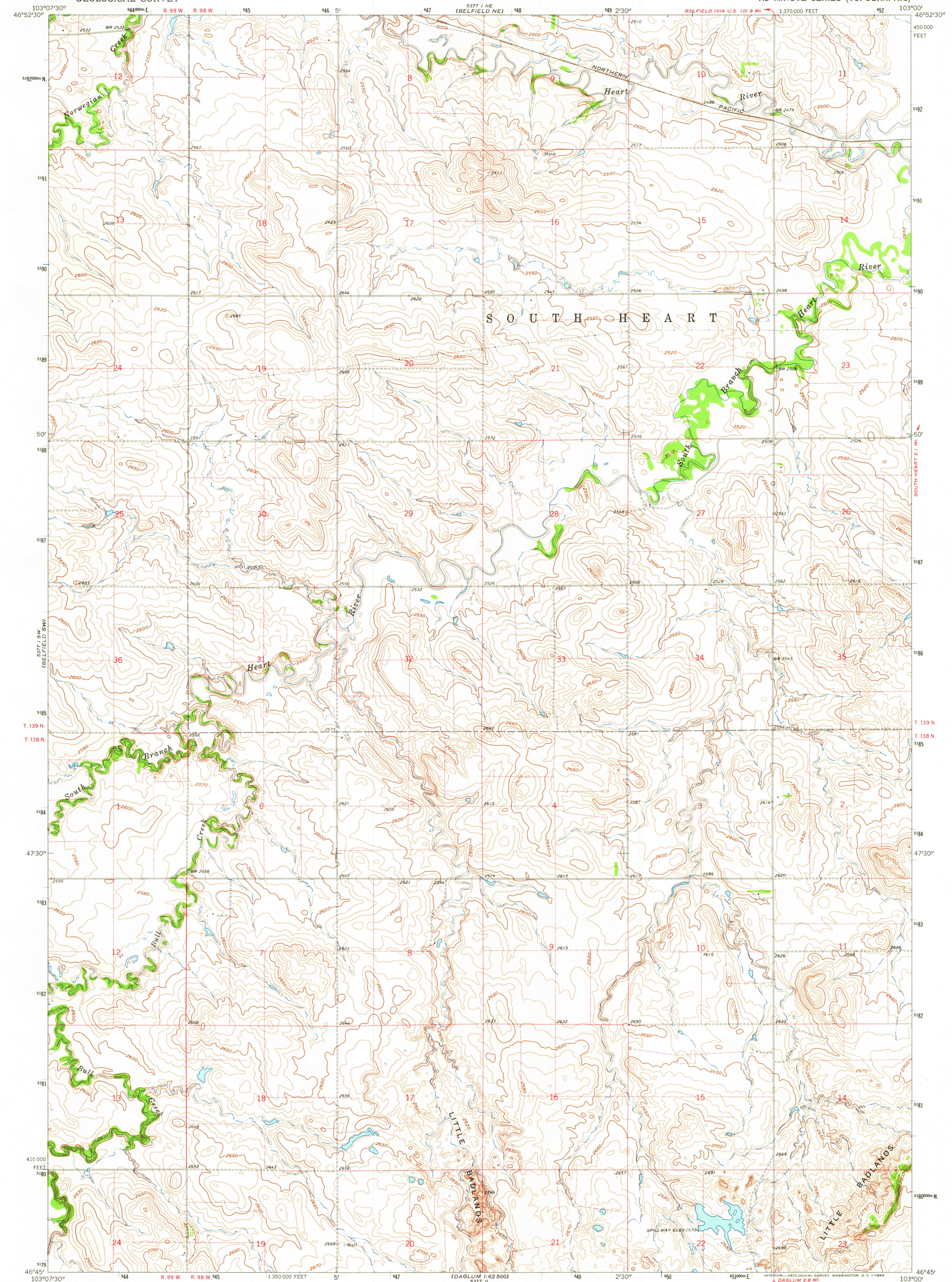


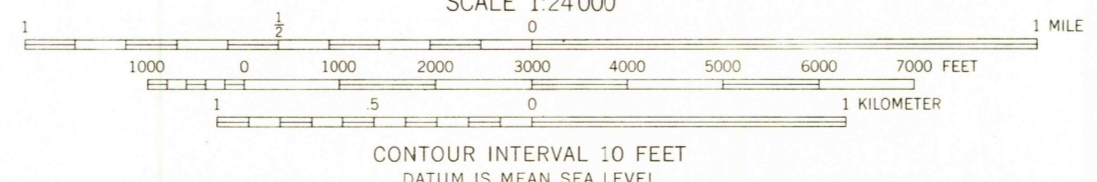
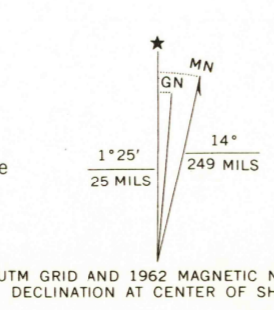
5377 I SW
(BELFIELD)

UNITED STATES
DEPARTMENT OF THE INTERIOR
GEOLOGICAL SURVEY

BELFIELD SE QUADRANGLE
NORTH DAKOTA—STARK CO.
7.5 MINUTE SERIES (TOPOGRAPHIC)



Mapped, edited, and published by the Geological Survey
Control by USGS and USC&GS
Topography by photogrammetric methods from aerial
photographs taken 1960. Field checked 1962
Polyconic projection. 1927 North American datum
10,000-foot grid based on North Dakota coordinate system, south zone
1000-meter Universal Transverse Mercator grid ticks,
zone 13, shown in blue
Fine red dashed lines indicate selected fence and field lines where
generally visible on aerial photographs
This information is unchecked



ROAD CLASSIFICATION
Light-duty ————— Unimproved dirt - - - - -

USGS
Historical File
Topographic Division

THIS MAP COMPLIES WITH NATIONAL MAP ACCURACY STANDARDS
FOR SALE BY U. S. GEOLOGICAL SURVEY, DENVER 25, COLORADO OR WASHINGTON 25, D. C.
AND BY THE STATE WATER CONSERVATION COMMISSION, BISMARCK, NORTH DAKOTA
A FOLDER DESCRIBING TOPOGRAPHIC MAPS AND SYMBOLS IS AVAILABLE ON REQUEST

BELFIELD SE, N. DAK.
N4645—W10300/7.5

1962

AMS 5377 I SE—SERIES V871

2015

MAR 23 1964