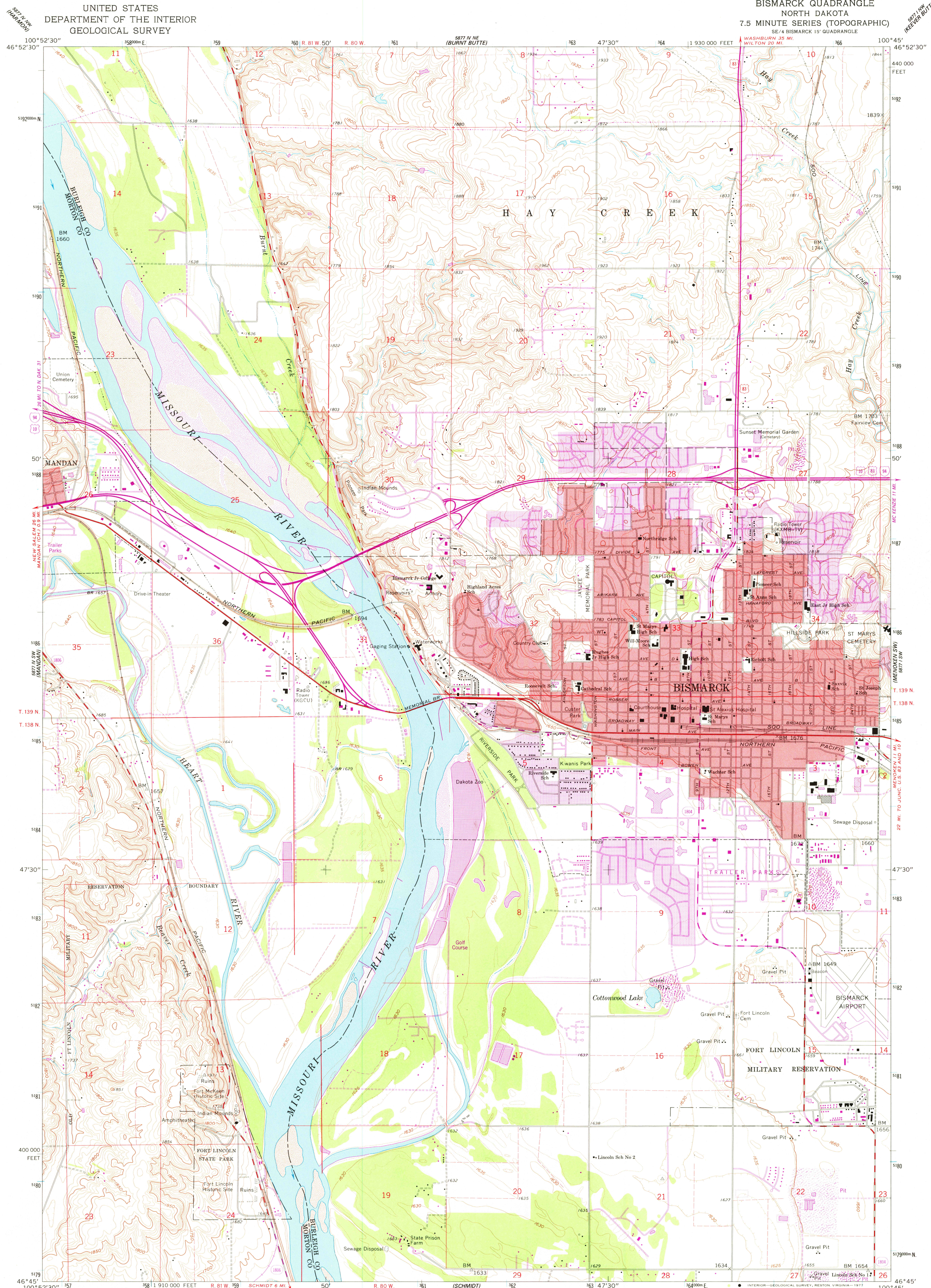
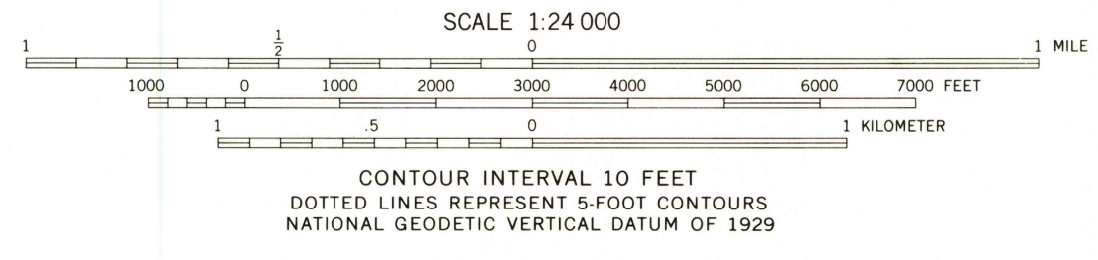
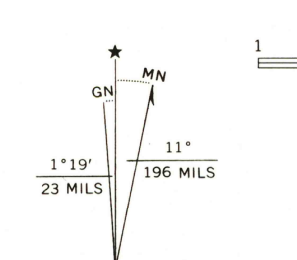


UNITED STATES
DEPARTMENT OF THE INTERIOR
GEOLOGICAL SURVEY

BISMARCK QUADRANGLE
NORTH DAKOTA
7.5 MINUTE SERIES (TOPOGRAPHIC)



Mapped, edited, and published by the Geological Survey in cooperation with State of North Dakota, Water Conservation Commission
Control by USGS, USC&GS, and USCE
Planimetry by photogrammetric methods from aerial photographs taken 1948. Topography by planimetric surveys 1949. Revised 1962
Polyconic projection. 1927 North American datum
10,000-foot grid based on North Dakota coordinate system, south zone
1000-meter Universal Transverse Mercator grid ticks, zone 14, shown in blue
Red tint indicates areas in which only landmark buildings are shown
Fine red dashed lines indicate selected fence and field lines where generally visible on aerial photographs. This information is unchecked



ROAD CLASSIFICATION

Primary highway, hard surface	Light-duty road, hard or improved surface
Secondary highway, hard surface	Unimproved road
Interstate Route	U. S. Route
USGS Historical File	State Route

QUADRANGLE LOCATION

THIS MAP COMPLIES WITH NATIONAL MAP ACCURACY STANDARDS FOR SALE BY U. S. GEOLOGICAL SURVEY, DENVER, COLORADO 80225, OR RESTON, VIRGINIA 22092 AND STATE WATER COMMISSION, BISMARCK, NORTH DAKOTA 58501 A FOLDER DESCRIBING TOPOGRAPHIC MAPS AND SYMBOLS IS AVAILABLE ON REQUEST

Revisions shown in purple compiled from aerial photographs taken 1976. This information not field checked
Purple tint indicates extension of urban areas

BISMARCK, N. DAK.
SE/4 BISMARCK 15' QUADRANGLE
N4645-W10045/7.5
1962
PHOTOREVISED 1976
AMS 5877 IV SE—SERIES V871

JUL 06 1978
5400