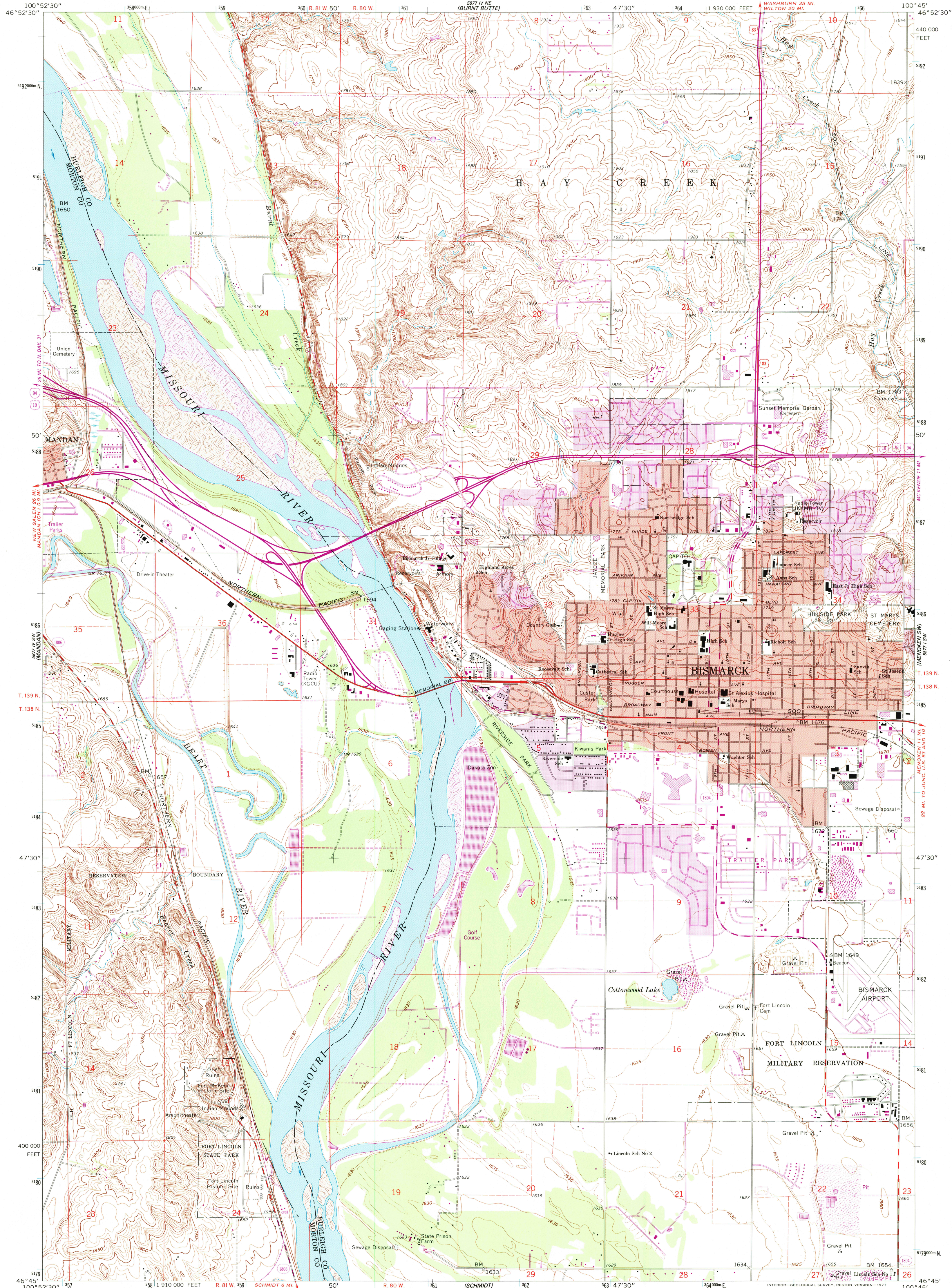


5877 IV NE
(BURN BUTTE)

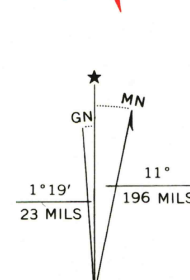
UNITED STATES
DEPARTMENT OF THE INTERIOR
GEOLOGICAL SURVEY

BISMARCK QUADRANGLE
NORTH DAKOTA
7.5 MINUTE SERIES (TOPOGRAPHIC)

5877 IWE
(KEEPER BUTTE)



Mapped, edited, and published by the Geological Survey
in cooperation with State of North Dakota,
Water Conservation Commission
Control by USGS, USC&GS, and USCE
Planimetry by photogrammetric methods from aerial photographs
taken 1948. Topography by planetable surveys 1949. Revised 1962
Polyconic projection. 1927 North American datum
10,000-foot grid based on North Dakota coordinate system, south zone
1000-meter Universal Transverse Mercator grid ticks,
zone 14, shown in blue
Red tint indicates areas in which only landmark buildings are shown
Fine red dashed lines indicate selected fence and field lines where
generally visible on aerial photographs. This information is unchecked



SCALE 1:24 000
1000 0 1000 2000 3000 4000 5000 6000 7000 FEET
1 0.5 1 KILOMETER
CONTOUR INTERVAL 10 FEET
DOTTED LINES REPRESENT 5-FOOT CONTOURS
NATIONAL GEODETIC VERTICAL DATUM OF 1929
THIS MAP COMPLIES WITH NATIONAL MAP ACCURACY STANDARDS
FOR SALE BY U. S. GEOLOGICAL SURVEY, DENVER, COLORADO 80225, OR RESTON, VIRGINIA 22092
AND STATE WATER COMMISSION, BISMARCK, NORTH DAKOTA 58501
A FOLDER DESCRIBING TOPOGRAPHIC MAPS AND SYMBOLS IS AVAILABLE ON REQUEST



ROAD CLASSIFICATION
Primary highway, hard surface ——— Light-duty road, hard or improved surface ———
Secondary highway, hard surface ——— Unimproved road ———
Interstate Route U. S. Route State Route

BISMARCK, N. DAK.
SE 1/4 BISMARCK 15' QUADRANGLE
N4645—W10045/7.5

1962
PHOTOREVISED 1976
AMS 5877 IV SE—SERIES V871

Revisions shown in purple compiled from aerial photographs
taken 1976. This information not field checked
Purple tint indicates extension of urban areas

