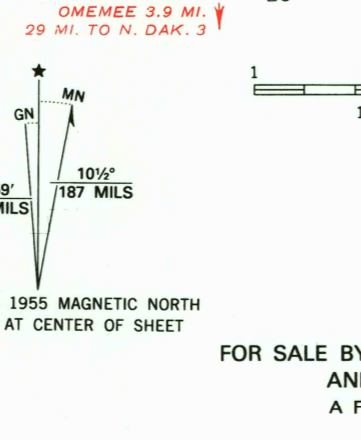


Mapped, edited, and published by the Geological Survey as part of the Department of the Interior program for the development of the Missouri River Basin
Control by USGS and USC&GS
Topography from aerial photographs by Kersh plotter
Aerial photographs taken 1954. Field check 1955
Polyconic projection. 1927 North American datum
10,000-foot grid based on North Dakota coordinate system, north zone
1000-meter Universal Transverse Mercator grid, zone 14
To place on the predicted North American Datum 1983, move the projection lines 3 meters north and 32 meters east as shown by dashed corner ticks

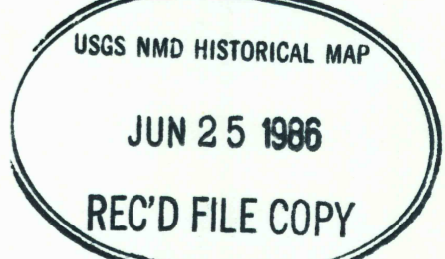


SCALE 1:24 000
CONTOUR INTERVAL 10 FEET
NATIONAL GEODETIC VERTICAL DATUM OF 1929

ROAD CLASSIFICATION
Primary highway, hard surface
Secondary highway, hard surface
Unimproved road
Interstate Route
U. S. Route
State Route



BOTTINEAU SE, N. DAK.
48100-GF-024
1955
DMA 5981 IV SE-SERIES 7871



THIS MAP COMPLIES WITH NATIONAL MAP ACCURACY STANDARDS
FOR SALE BY U. S. GEOLOGICAL SURVEY, DENVER, COLORADO 80225, OR RESTON, VIRGINIA 22092
AND NORTH DAKOTA WATER COMMISSION, BISMARCK, NORTH DAKOTA 58501
A FOLDER DESCRIBING TOPOGRAPHIC MAPS AND SYMBOLS IS AVAILABLE ON REQUEST