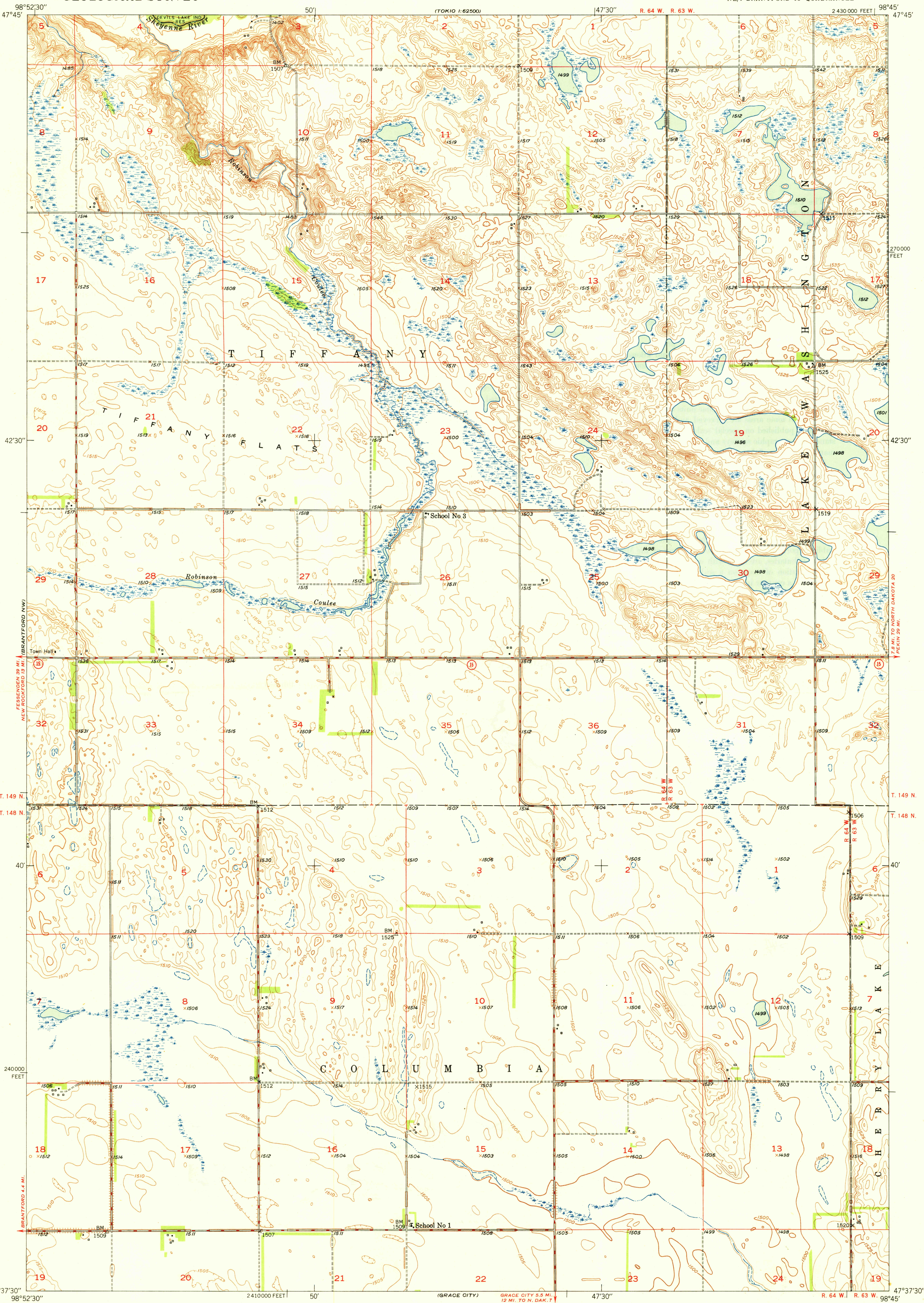
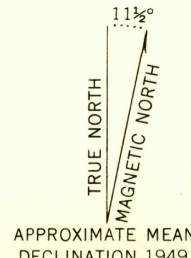


U.S.G.S.
FILE COPY
Inspection and Editing

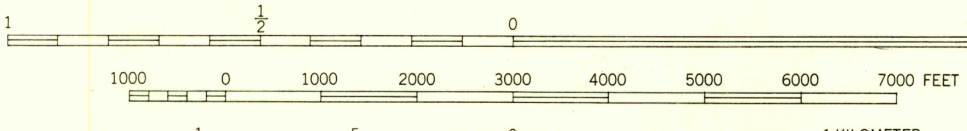


Mapped, edited, and published by the Geological Survey as part of the Department of the Interior program for the development of the Missouri River Basin
Control by USGS and USC&GS
Culture and drainage in part compiled from aerial photographs taken 1944
Topography by plane-table methods 1949
Polyconic projection. 1927 North American datum
10,000-foot grid based on North Dakota coordinate system, north zone



APPROXIMATE MEAN DECLINATION, 1949

SCALE 1:24000



CONTOUR INTERVAL 5 FEET
DATUM IS MEAN SEA LEVEL

U.S.G.S.
Historical File
Topographic Division

ROAD CLASSIFICATION
HARD-SURFACE ALL WEATHER ROADS DRY WEATHER ROADS
Heavy-duty 2 LANE 18 LANE Improved dirt
Medium-duty 2 LANE 18 LANE Unimproved dirt
Loose-surface, graded, or narrow hard-surface
U. S. Route State Route

BRANTFORD NE, N. DAK.
NE/4 BRANTFORD 15' QUADRANGLE
N4737.5-W9845/7.5

EDITION OF 1950

THIS MAP COMPLIES WITH NATIONAL MAP ACCURACY STANDARDS
FOR SALE BY U. S. GEOLOGICAL SURVEY, FEDERAL CENTER, DENVER, COLORADO OR WASHINGTON 25, D. C.
A FOLDER DESCRIBING TOPOGRAPHIC MAPS AND SYMBOLS IS AVAILABLE ON REQUEST

U.S.G.S.
FILE COPY
Inspection and Editing