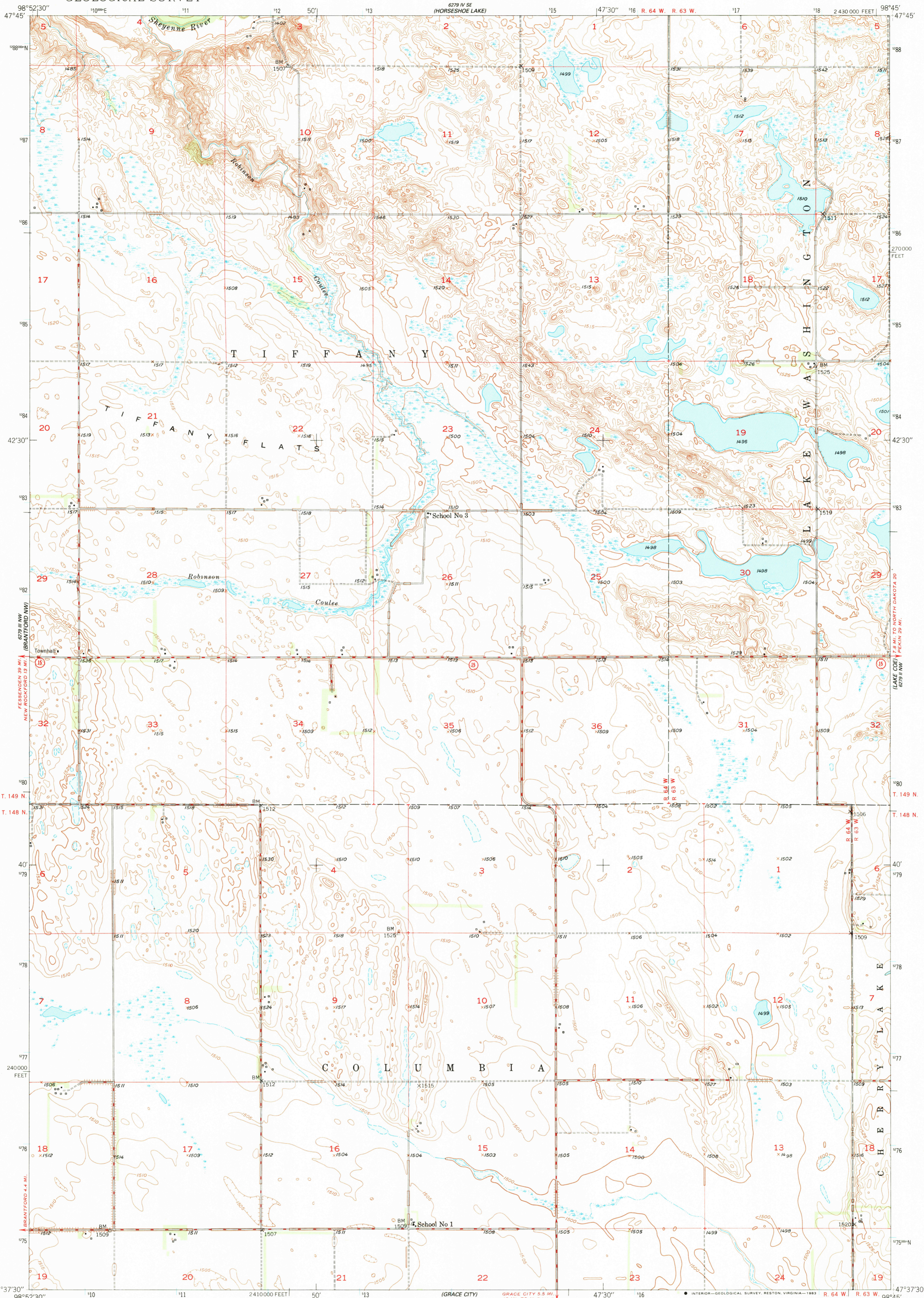
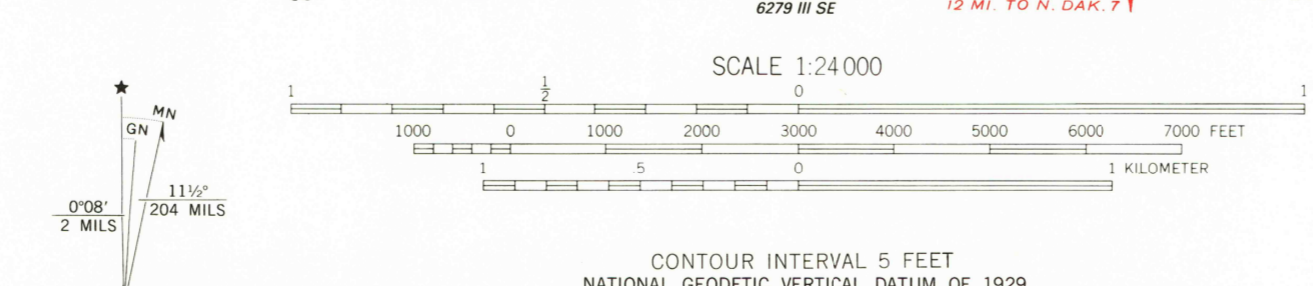


UNITED STATES
DEPARTMENT OF THE INTERIOR
GEOLOGICAL SURVEY

BRANTFORD NE QUADRANGLE
NORTH DAKOTA EDDY CO.
7.5 MINUTE SERIES (TOPOGRAPHIC)

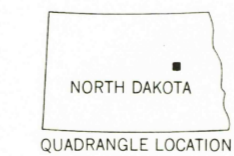


Mapped, edited, and published by the Geological Survey as part of the Department of the Interior program for the development of the Missouri River Basin Control by USGS and USC&GS
Culture and drainage in part compiled from aerial photographs taken 1944
Topography by plane-table methods 1949
Polyconic projection. 1927 North American Datum 10,000-foot grid based on North Dakota coordinate system, north zone 1000-meter Universal Transverse Mercator grid ticks, zone 14, shown in blue
To place on the predicted North American Datum 1983 move the projection lines 5 meters north and 30 meters east as shown by dashed corner ticks
Map photoinspected 1971
No major culture or drainage changes observed



ROAD CLASSIFICATION

HARD-SURFACE ALL WEATHER ROADS	DRY WEATHER ROADS
Heavy-duty <u>4 LANE 6 LANE</u>	Improved dirt
Medium-duty <u>4 LANE 6 LANE</u>	Unimproved dirt
Loose-surface, graded, or narrow hard-surface	
U. S. Route	State Route



BRANTFORD NE, N. DAK.
N4737.5-W9845.7.5
EDITION OF 1950
PHOTOINSPECTED 1971
DMA 6279 III NE-SERIES V871

THIS MAP COMPLIES WITH NATIONAL MAP ACCURACY STANDARDS
FOR SALE BY U. S. GEOLOGICAL SURVEY, DENVER, COLORADO 80225, OR RESTON, VIRGINIA 22092
AND BY THE STATE WATER COMMISSION, BISMARCK, NORTH DAKOTA 58501
A FOLDER DESCRIBING TOPOGRAPHIC MAPS AND SYMBOLS IS AVAILABLE ON REQUEST

NOV 21 1950
RETURN TO:
USGS AND HISTORICAL MAP ARCHIVES