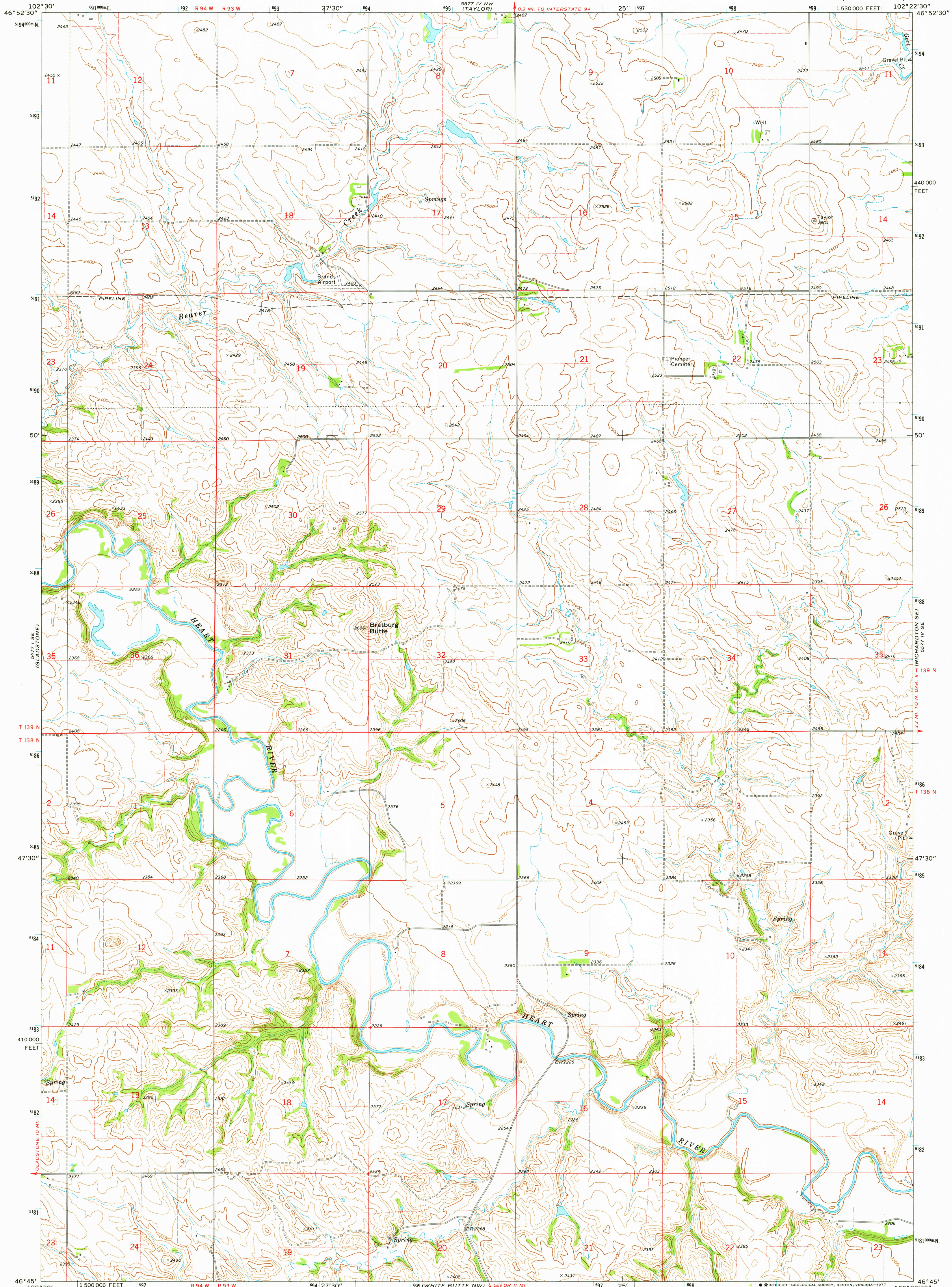


571 N.E.  
120 V.L.E.

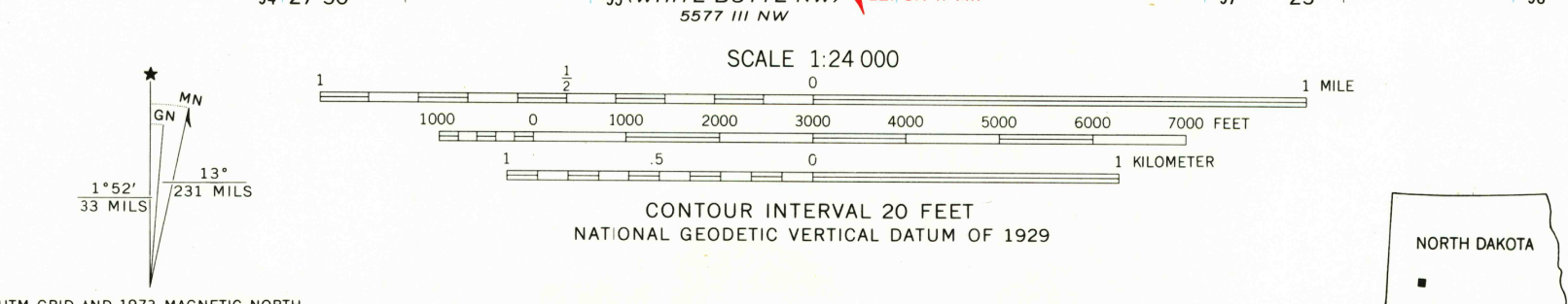
UNITED STATES  
DEPARTMENT OF THE INTERIOR  
GEOLOGICAL SURVEY

BRATBURG BUTTE QUADRANGLE  
NORTH DAKOTA—STARK CO.  
7.5 MINUTE SERIES (TOPOGRAPHIC)

577 V.L.E.  
100 RICHARDSON



Mapped, edited, and published by the Geological Survey  
Control by USGS and NOS/NOAA  
Topography by photogrammetric methods from aerial photographs taken 1972. Field checked 1973  
Projection and 10,000-foot grid ticks: North Dakota coordinate system, south zone (Lambert conformal conic) 1000-meter Universal Transverse Mercator grid ticks, zone 13, shown in blue. 1927 North American datum  
Fine red dashed lines indicate selected fence lines



ROAD CLASSIFICATION

Primary highway, hard surface	Light-duty road, hard or improved surface
Secondary highway, hard surface	Unimproved road
Interstate Route	U.S. Route
	State Route

THIS MAP COMPLIES WITH NATIONAL MAP ACCURACY STANDARDS  
FOR SALE BY U.S. GEOLOGICAL SURVEY, DENVER, COLORADO 80225, OR WASHINGTON, D.C. 20242  
AND BY THE STATE WATER COMMISSION, BISMARCK, NORTH DAKOTA 58501  
A FOLDER DESCRIBING TOPOGRAPHIC MAPS AND SYMBOLS IS AVAILABLE ON REQUEST

USGS  
Historical File  
Topographic Division  
1973  
AMS 5577 IV SW—SERIES 9871

BRATBURG BUTTE, N. DAK.  
N4645—W10222.5/7.5

NOV 10 1977  
2900