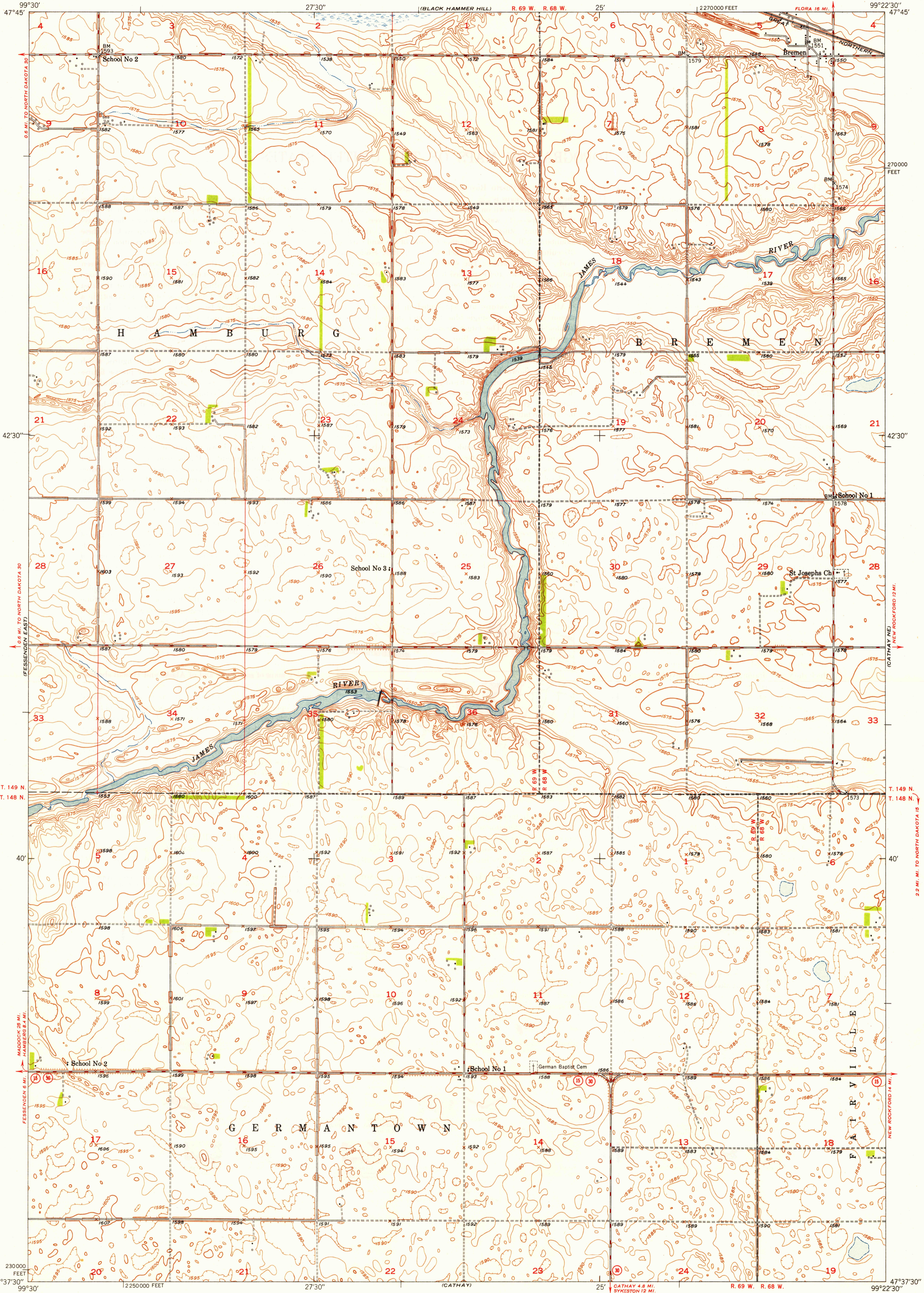


UNITED STATES
DEPARTMENT OF THE INTERIOR
GEOLOGICAL SURVEY

BREMEN QUADRANGLE
NORTH DAKOTA—WELLS CO.
7.5 MINUTE SERIES (TOPOGRAPHIC)
NW/4 CATHAY 15' QUADRANGLE

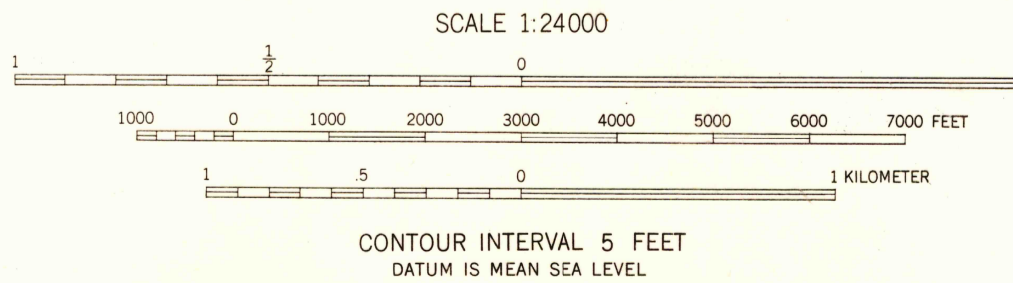


U.S.G.S.
FILE COPY
Inspection and Mailing

U.S.G.S.
FILE COPY
Inspection and Mailing

Mapped, edited, and published by the Geological Survey as part of the Department of the Interior program for the development of the Missouri River Basin
Control by USGS and USC&GS
Culture and drainage in part compiled from aerial photographs taken 1940
Topography by plane-table methods 1948
Polyconic projection. 1927 North American datum
10,000-foot grid based on North Dakota coordinate system, north zone

TRUE NORTH
MAGNETIC NORTH
APPROXIMATE MEAN DECLINATION, 1948



USGS
Historical File
Topographic Division

ROAD CLASSIFICATION
 HARD-SURFACE ALL WEATHER ROADS DRY WEATHER ROADS
 Heavy-duty... 4 LANE LANE Improved dirt...
 Medium-duty... 2 LANE LANE Unimproved dirt...
 Loose-surface, graded, or narrow hard-surface...
 U.S. Route State Route

U.S.G.S.
FILE COPY
Inspection and Mailing

BREMEN, N. DAK.
NW/4 CATHAY 15' QUADRANGLE
N4737.5—W9922.5/7.5
EDITION OF 1949

THIS MAP COMPLIES WITH NATIONAL MAP ACCURACY STANDARDS
FOR SALE BY U. S. GEOLOGICAL SURVEY, WASHINGTON 25, D. C.

OCT 3 1949 2075