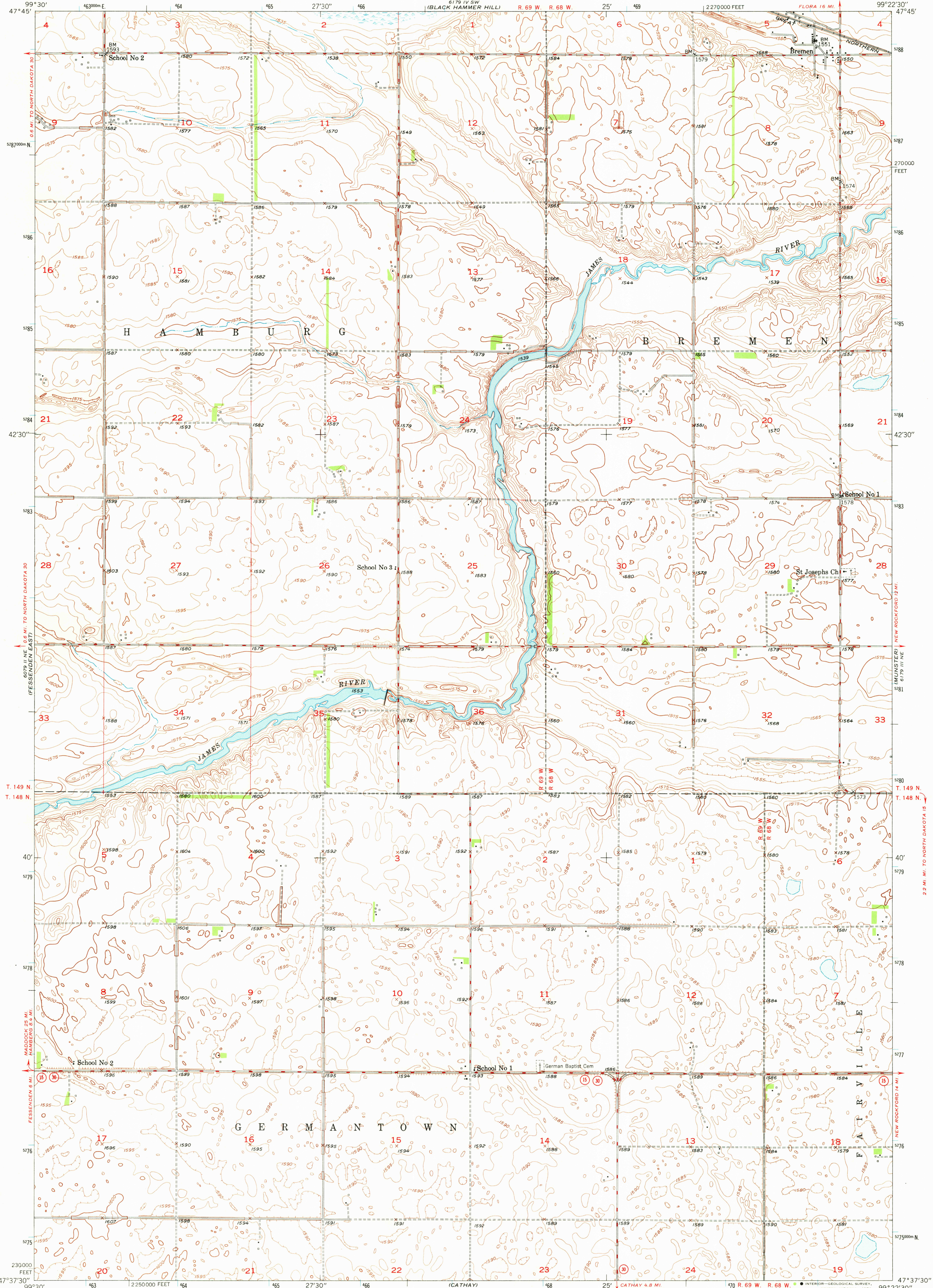


6079 1/4 NE (HAMBERG)

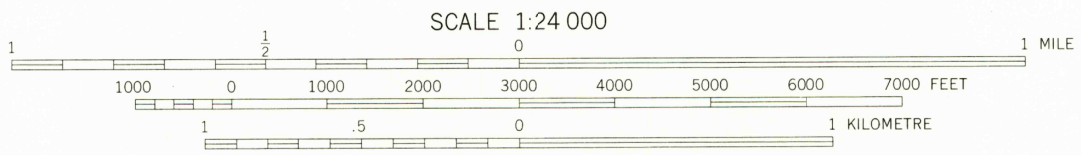
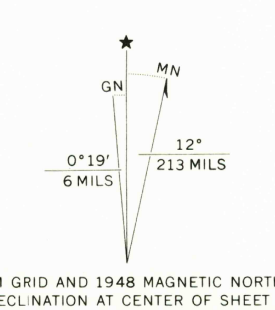
UNITED STATES DEPARTMENT OF THE INTERIOR GEOLOGICAL SURVEY

BREMEN QUADRANGLE NORTH DAKOTA - WELLS CO. 7.5 MINUTE SERIES (TOPOGRAPHIC)

6179 1/4 SE (FLORA SCI)



Mapped, edited, and published by the Geological Survey as part of the Department of the Interior program for the development of the Missouri River Basin... Control by USGS and USC&GS... Culture and drainage in part compiled from aerial photographs taken 1940... Topography by plane-table methods 1948... Polyconic projection. 1927 North American datum 10,000-foot grid based on North Dakota coordinate system, north zone... 1000-metre Universal Transverse Mercator grid ticks, zone 14, shown in blue... Map photostereographed 1971... No major culture or drainage changes observed



CONTOUR INTERVAL 5 FEET NATIONAL GEODETIC VERTICAL DATUM OF 1929

THIS MAP COMPLIES WITH NATIONAL MAP ACCURACY STANDARDS FOR SALE BY U.S. GEOLOGICAL SURVEY, RESTON, VIRGINIA 22092 A FOLDER DESCRIBING TOPOGRAPHIC MAPS AND SYMBOLS IS AVAILABLE ON REQUEST

ROAD CLASSIFICATION table with categories: Heavy-duty, Medium-duty, Loose-surface, U.S. Route, Dry weather roads, Improved dirt, Unimproved dirt, State Route.

BREMEN, N. DAK. NW 1/4 CATHAY 15 QUADRANGLE N4737.5-W9922.5/7.5

USGS Historical File Topographic Division

PHOTOINSPECTED 1971 AMS 6179 1/4 NW-SERIES V871

APR 12 1977

1310