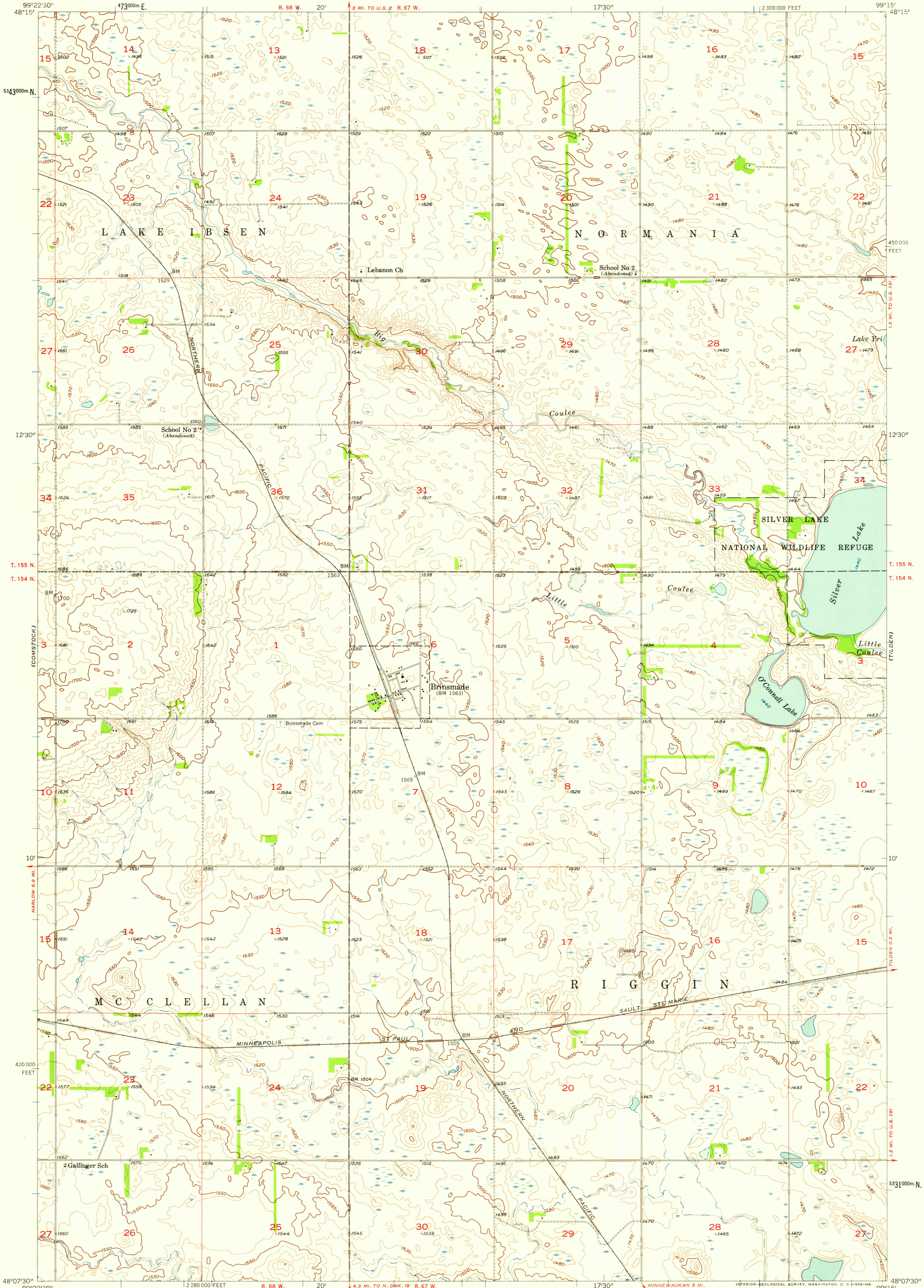
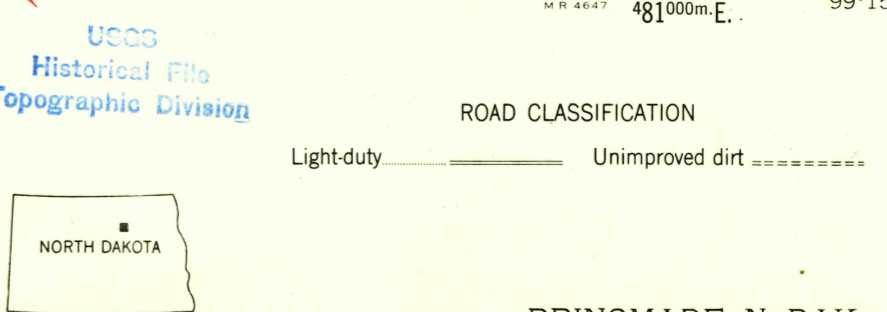
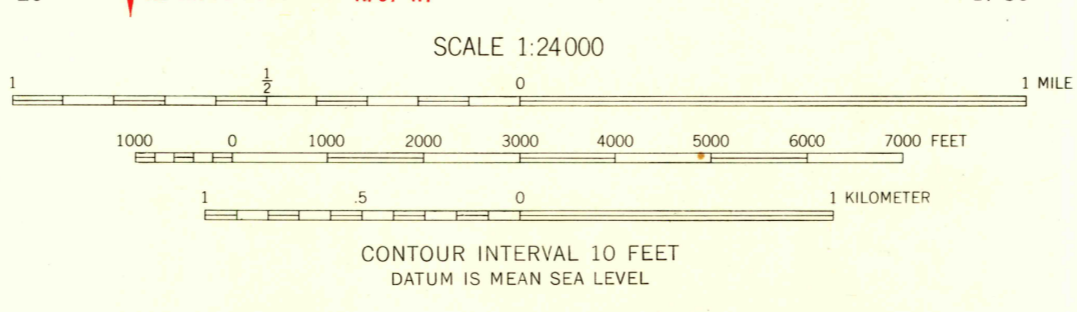
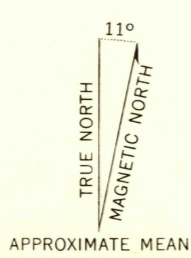


(CHURCH'S FERRY)



Mapped, edited, and published by the Geological Survey as part of the Department of the Interior program for the development of the Missouri River Basin Control by USGS and USC&GS
Topography from aerial photographs by photogrammetric methods and by planetable surveys 1957. Aerial photographs taken 1956
Polyconic projection. 1927 North American datum 10,000-foot grid based on North Dakota coordinate system, north zone
1000-meter Universal Transverse Mercator grid ticks, zone 14, shown in blue



THIS MAP COMPLIES WITH NATIONAL MAP ACCURACY STANDARDS FOR SALE BY U. S. GEOLOGICAL SURVEY, DENVER 2, COLORADO OR WASHINGTON 25, D. C. AND BY THE STATE WATER CONSERVATION COMMISSION, BISMARCK, NORTH DAKOTA A FOLDER DESCRIBING TOPOGRAPHIC MAPS AND SYMBOLS IS AVAILABLE ON REQUEST

BRINSMADE, N. DAK.
N4807.5-W9915.7.5

1957

U.S.G.S.
FILE COPY
TOPOGRAPHIC DIVISION

DEC 5 1958

2440