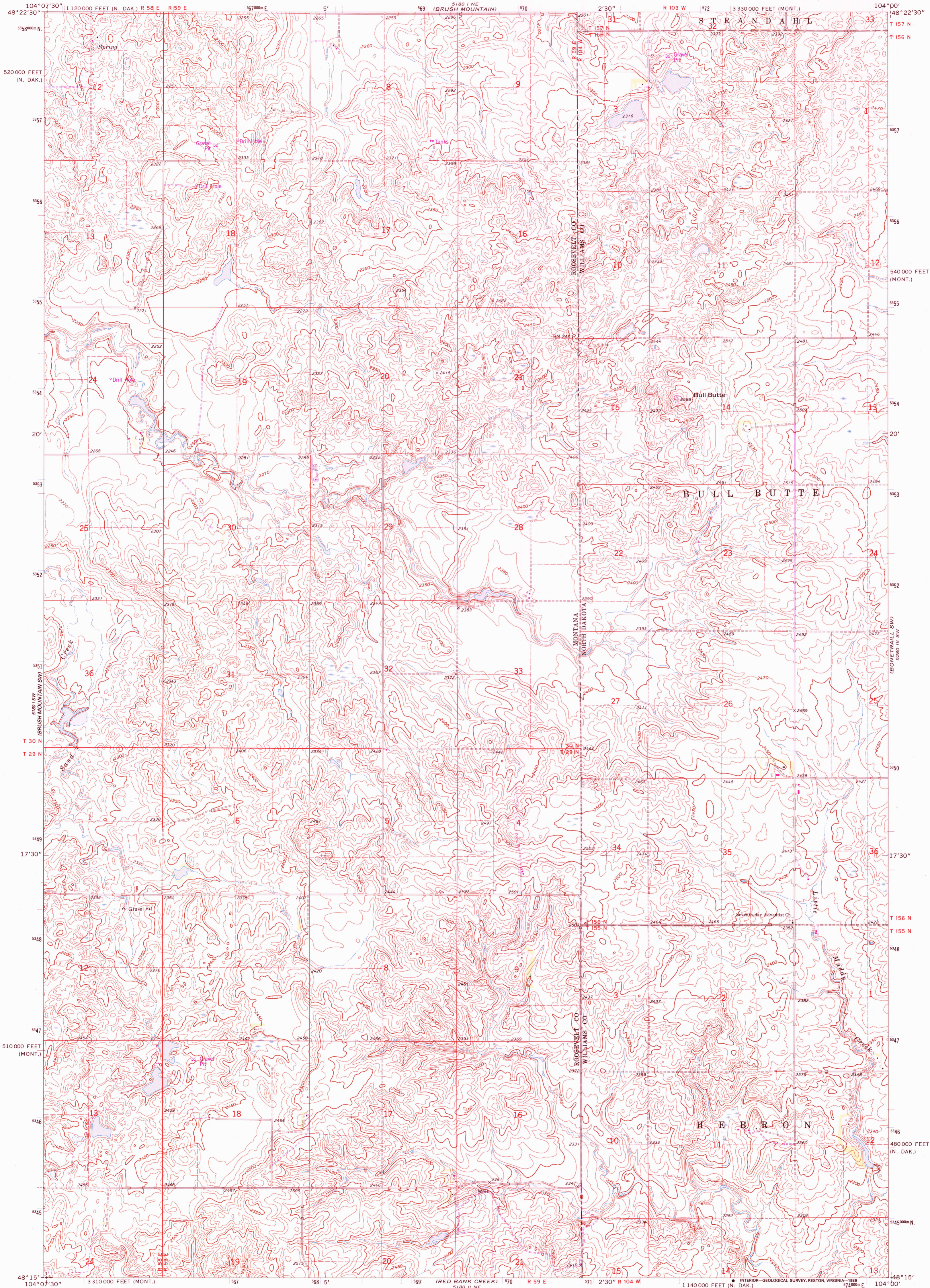
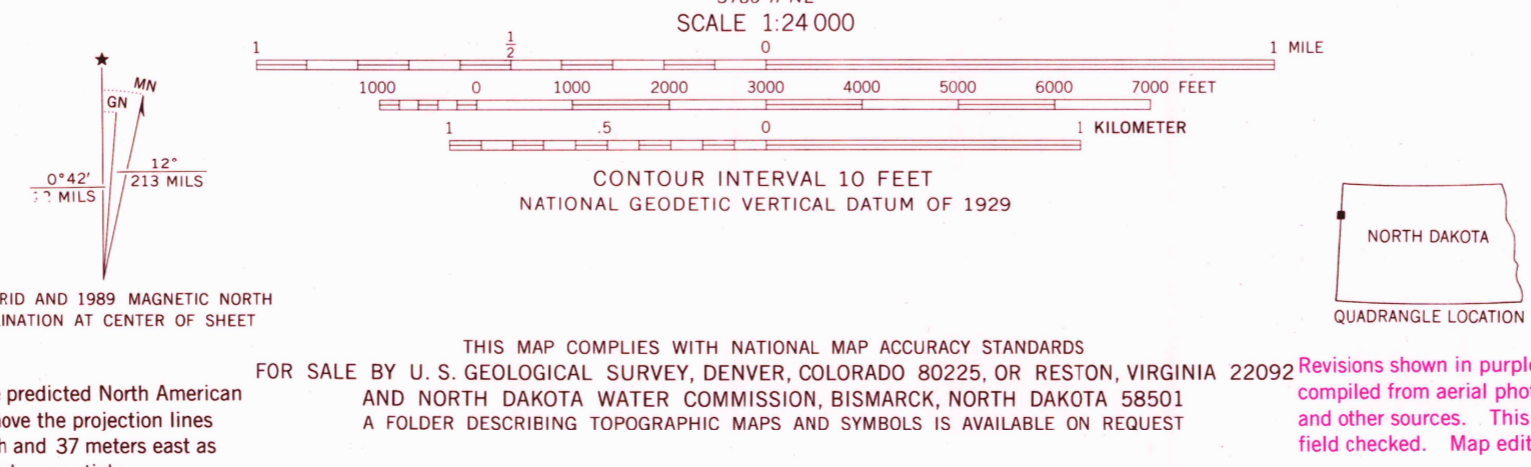


UNITED STATES
DEPARTMENT OF THE INTERIOR
GEOLOGICAL SURVEY

BULL BUTTE QUADRANGLE
NORTH DAKOTA-MONTANA
7.5 MINUTE SERIES (TOPOGRAPHIC)



Mapped, edited, and published by the Geological Survey in cooperation with the North Dakota Water Commission Control by USGS and NOS/NOAA
Topography by photogrammetric methods from aerial photographs taken 1973. Field checked 1974
Projection: Montana coordinate system, north zone (Lambert conformal conic)
10,000-foot grid ticks based on Montana coordinate system, north zone and North Dakota coordinate system, north zone
1000-meter Universal Transverse Mercator grid ticks, zone 13, shown in blue. 1927 North American datum
Fine red dashed lines indicate selected fence and field lines where generally visible on aerial photographs
This information is unchecked
To place on the predicted North American Datum 1983 move the projection lines 1 meter north and 37 meters east as shown by dashed corner ticks



ROAD CLASSIFICATION
Primary highway, hard surface ——— Light-duty road, hard or improved surface ———
Secondary highway, hard surface ——— Unimproved road - - - - -
○ Interstate Route □ U.S. Route ○ State Route

UTM GRID AND 1989 MAGNETIC NORTH DECLINATION AT CENTER OF SHEET

THIS MAP COMPLIES WITH NATIONAL MAP ACCURACY STANDARDS FOR SALE BY U.S. GEOLOGICAL SURVEY, DENVER, COLORADO 80225, OR RESTON, VIRGINIA 22092
AND NORTH DAKOTA WATER COMMISSION, BISMARCK, NORTH DAKOTA 58501
A FOLDER DESCRIBING TOPOGRAPHIC MAPS AND SYMBOLS IS AVAILABLE ON REQUEST

Revisions shown in purple and woodland compiled from aerial photographs taken 1980 and other sources. This information not field checked. Map edited 1989

BULL BUTTE, N. DAK.—MONT.
48104-C1-TF-024
1974
PHOTOREVISED 1989
DMA 5180 1 SE—SERIES V894

USGS NMD
JUN 03 1989
REC'D FILE COPY