

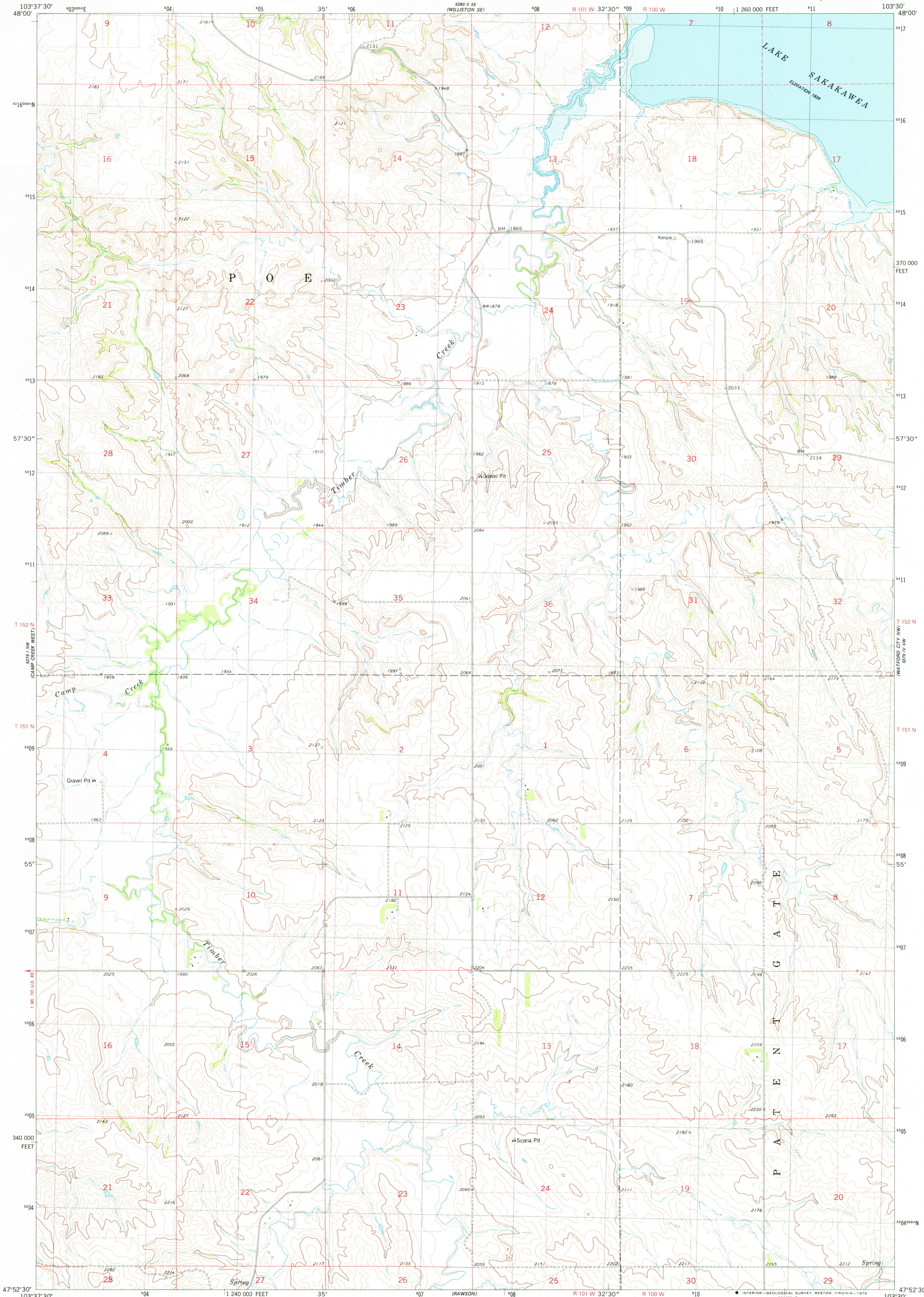
103°37'30"
48°00'

UNITED STATES
DEPARTMENT OF THE INTERIOR
GEOLOGICAL SURVEY

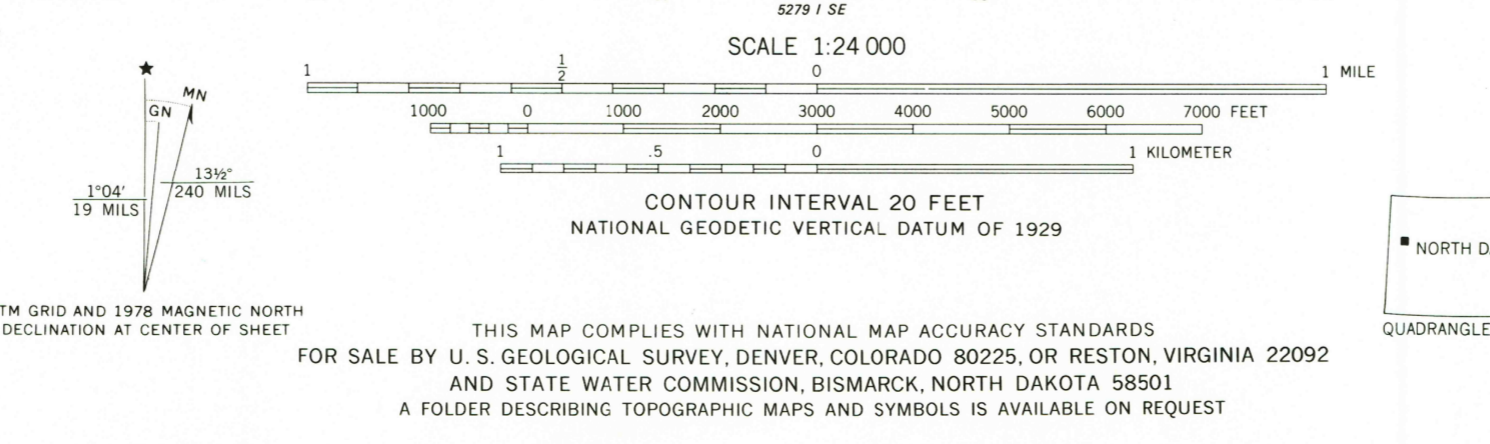


CAMP CREEK EAST QUADRANGLE
NORTH DAKOTA—MC KENZIE CO.
7.5 MINUTE SERIES (TOPOGRAPHIC)

103°30'
48°00'



Maped, edited, and published by the Geological Survey
Control by USGS and NOS/NOAA
Topography by photogrammetric methods from aerial photographs taken 1973 and 1977. Field checked 1975. Map edited 1978
Projection and 10,000-foot grid ticks: North Dakota coordinate system, north zone (Lambert conformal conic)
1000-meter Universal Transverse Mercator grid, zone 13
1927 North American datum
Areas covered by dashed light-blue pattern are subject to controlled inundation
Fine red dashed lines indicate selected fence and field lines where generally visible on aerial photographs
This information is unchecked



ROAD CLASSIFICATION
Primary highway, hard surface
Secondary highway, hard surface
Unimproved road
Light-duty road, hard or improved surface
Interstate Route
U.S. Route
State Route

SEP 13 1979

USGS CAMP CREEK EAST, N. DAK.
Historical File
Topographic Division
N4752.5-W10330/7.5
1978
AMS 5279 I NE-SERIES V871

1800