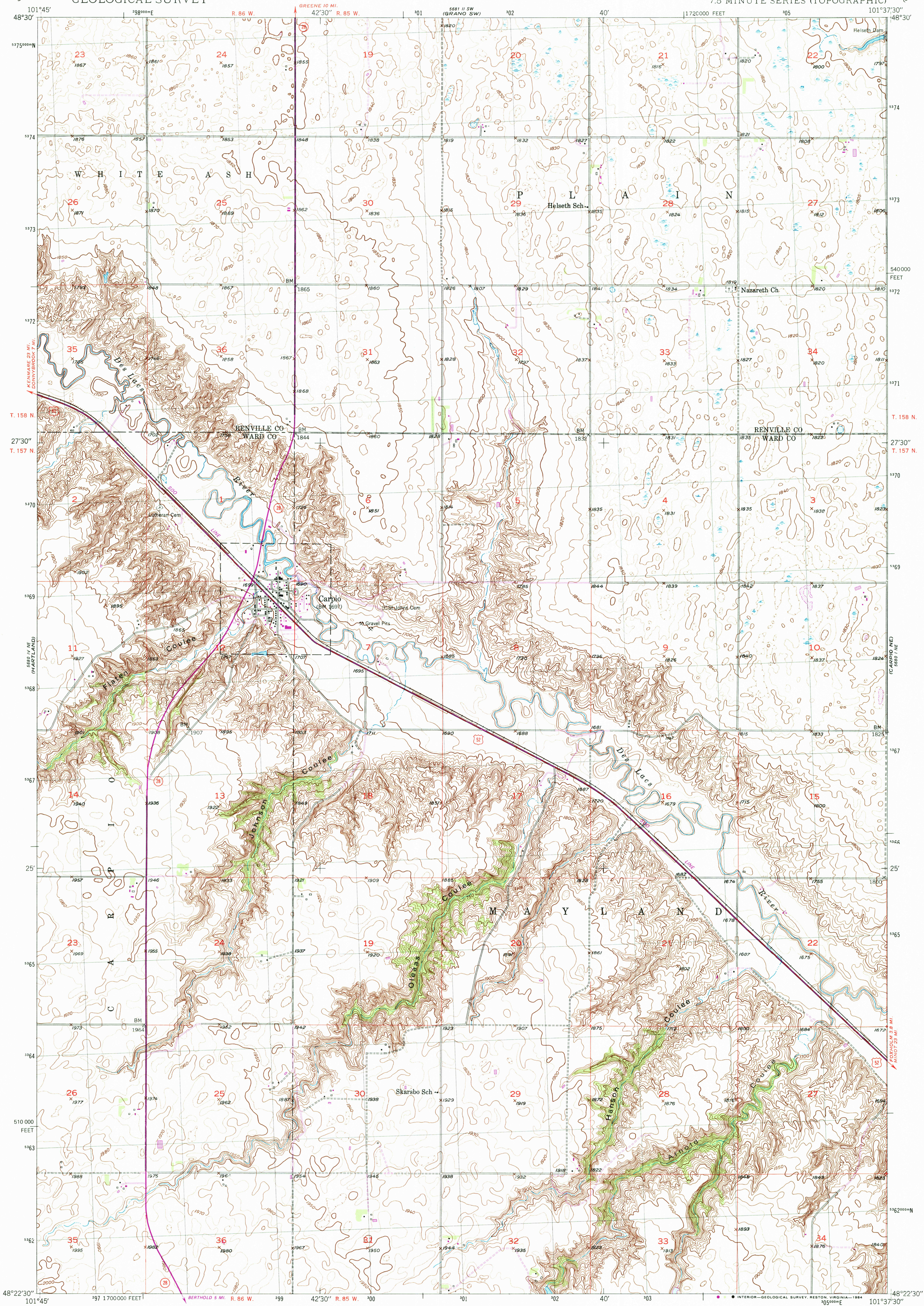


1881 U.S.  
TOLLEY SE

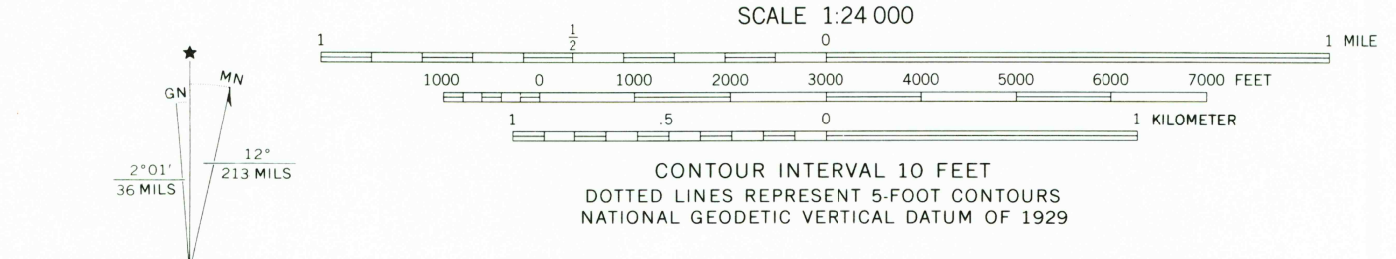
UNITED STATES  
DEPARTMENT OF THE INTERIOR  
GEOLOGICAL SURVEY

CARPIO QUADRANGLE  
NORTH DAKOTA  
7.5 MINUTE SERIES (TOPOGRAPHIC)

1881 U.S.  
BRAND



Mapped, edited, and published by the Geological Survey as part of the Department of the Interior program for the development of the Missouri River Basin Control by USGS and USC&GS  
Culture and drainage in part compiled from aerial photographs taken 1946  
Topography by plane-table methods 1948  
Polyconic projection. 1927 North American datum 10000-foot grid based on North Dakota coordinate system, north zone  
1000 meter Universal Transverse Mercator grid, zone 14  
Revisions shown in purple and woodland compiled from aerial photographs taken 1977 and other source data. This information not field checked. Map edited 1979  
To place on the predicted North American Datum 1983, move the projection lines 4 meters north and 35 meters east as shown by dashed corner ticks



ROAD CLASSIFICATION

Primary highway, all weather, hard surface	Light-duty road, all weather, improved surface
Secondary highway, all weather, hard surface	Unimproved road, fair or dry weather

Interstate Route U.S. Route State Route

UTM GRID AND 1979 MAGNETIC NORTH DECLINATION AT CENTER OF SHEET  
THIS MAP COMPLIES WITH NATIONAL MAP ACCURACY STANDARDS  
FOR SALE BY U.S. GEOLOGICAL SURVEY, DENVER COLORADO 80225, OR RESTON, VIRGINIA 22092  
AND BY THE STATE WATER COMMISSION, BISMARCK, NORTH DAKOTA 58501  
A FOLDER DESCRIBING TOPOGRAPHIC MAPS AND SYMBOLS IS AVAILABLE ON REQUEST



CARPIO, N. DAK.  
N4822.5-W10137.5/7.5  
EDITION OF 1949  
PHOTOREVISED 1979  
AMS 5680 1 NW-SERIES V871

RETURN TO:  
USGS AND HISTORICAL MAP ARCHIVES