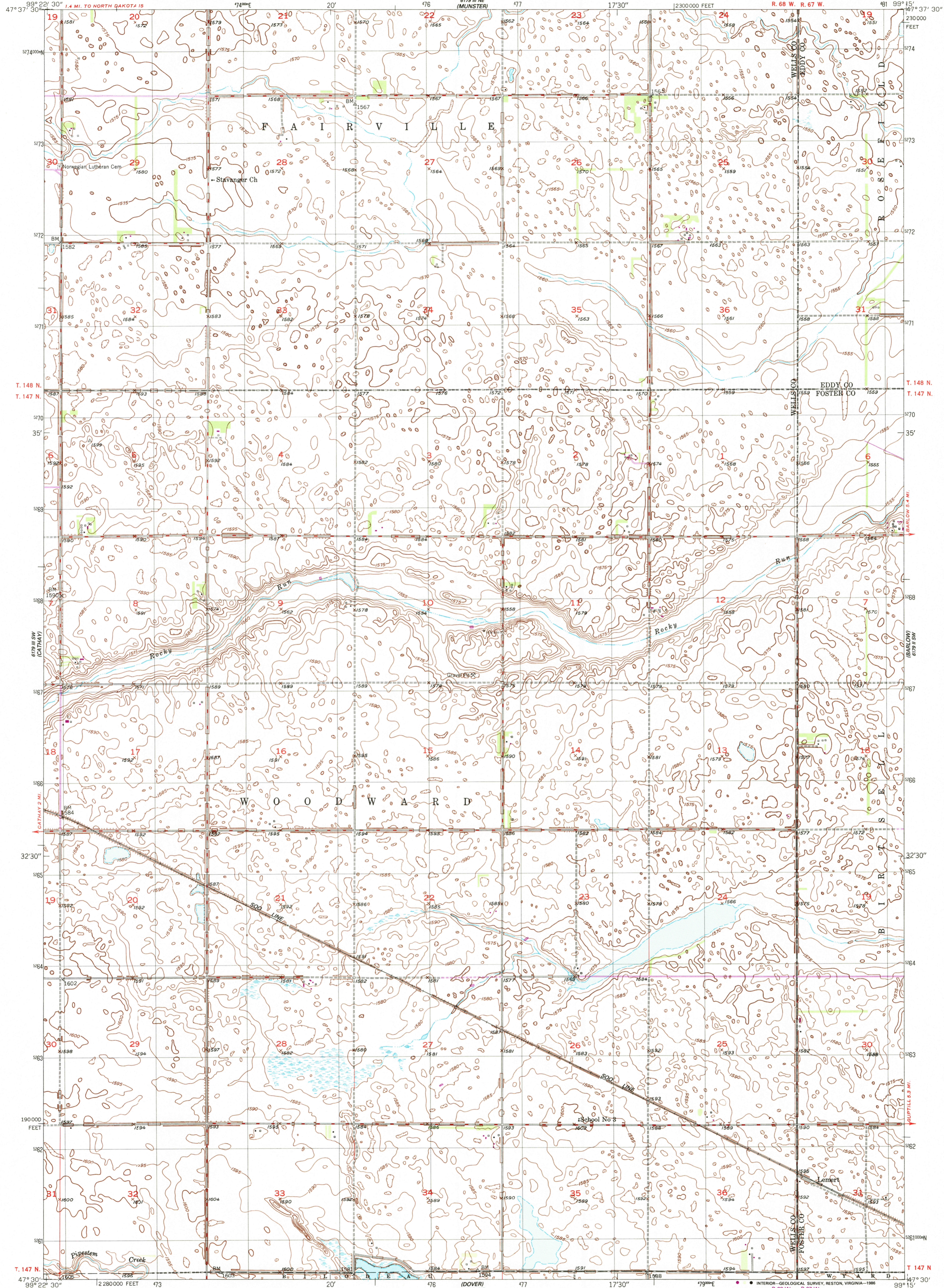


6781 NW (BARLOW)

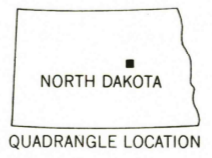
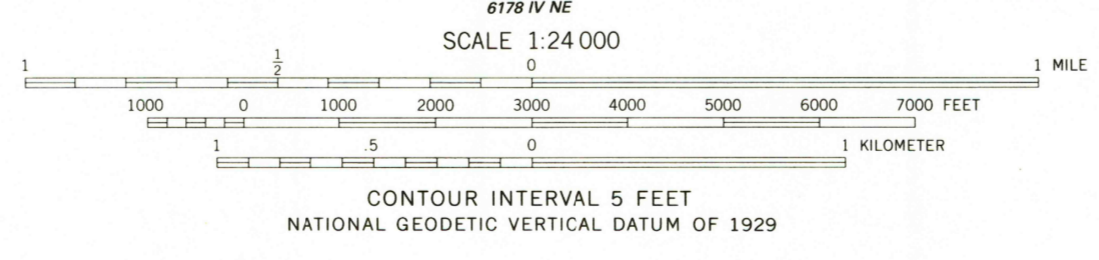
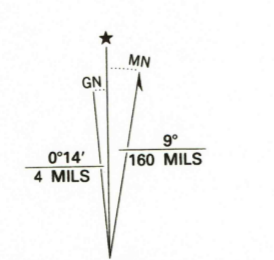
UNITED STATES
DEPARTMENT OF THE INTERIOR
GEOLOGICAL SURVEY

CATHAY SE QUADRANGLE
NORTH DAKOTA
7.5 MINUTE SERIES (TOPOGRAPHIC)
SE/4 CATHAY 15' QUADRANGLE

878 NW (NEW ROCKFORD)



Mapped, edited, and published by the Geological Survey as part of the Department of the Interior program for the development of the Missouri River Basin. Control by USGS and USC&GS. Culture and drainage in part compiled from aerial photographs taken 1940. Topography by plane-table methods 1948. Polyconic projection. 1927 North American datum 10000-foot grid based on North Dakota coordinate system, north zone. 1000-meter Universal Transverse Mercator grid, zone 14. To place on the predicted North American Datum 1983, move the projection lines 4 meters north and 30 meters east as shown by dashed corner ticks.



ROAD CLASSIFICATION
HARD-SURFACE ALL WEATHER ROADS DRY WEATHER ROADS
Heavy-duty... **4 LANE 16 LANE** Improved dirt
Medium-duty... **4 LANE 16 LANE** Unimproved dirt
Loose-surface, graded, or narrow hard-surface
U. S. Route
State Route

THIS MAP COMPLIES WITH NATIONAL MAP ACCURACY STANDARDS
FOR SALE BY U. S. GEOLOGICAL SURVEY, DENVER, COLORADO 80225, OR RESTON, VIRGINIA 22092
AND NORTH DAKOTA WATER COMMISSION, BISMARCK, NORTH DAKOTA 58501
A FOLDER DESCRIBING TOPOGRAPHIC MAPS AND SYMBOLS IS AVAILABLE ON REQUEST

Revisions shown in purple compiled from aerial photographs taken 1982 and other sources. This information not field checked. Map edited 1986

CATHAY SE, N. DAK.
SE/4 CATHAY 15' QUADRANGLE
47099-E3-TF-024
949
PHOTOREVISED 1986
DMA 6179 III SE-SERIES V871

USGS NMD HISTORICAL MAP
AUG 14 1986
REC'D FILE COPY