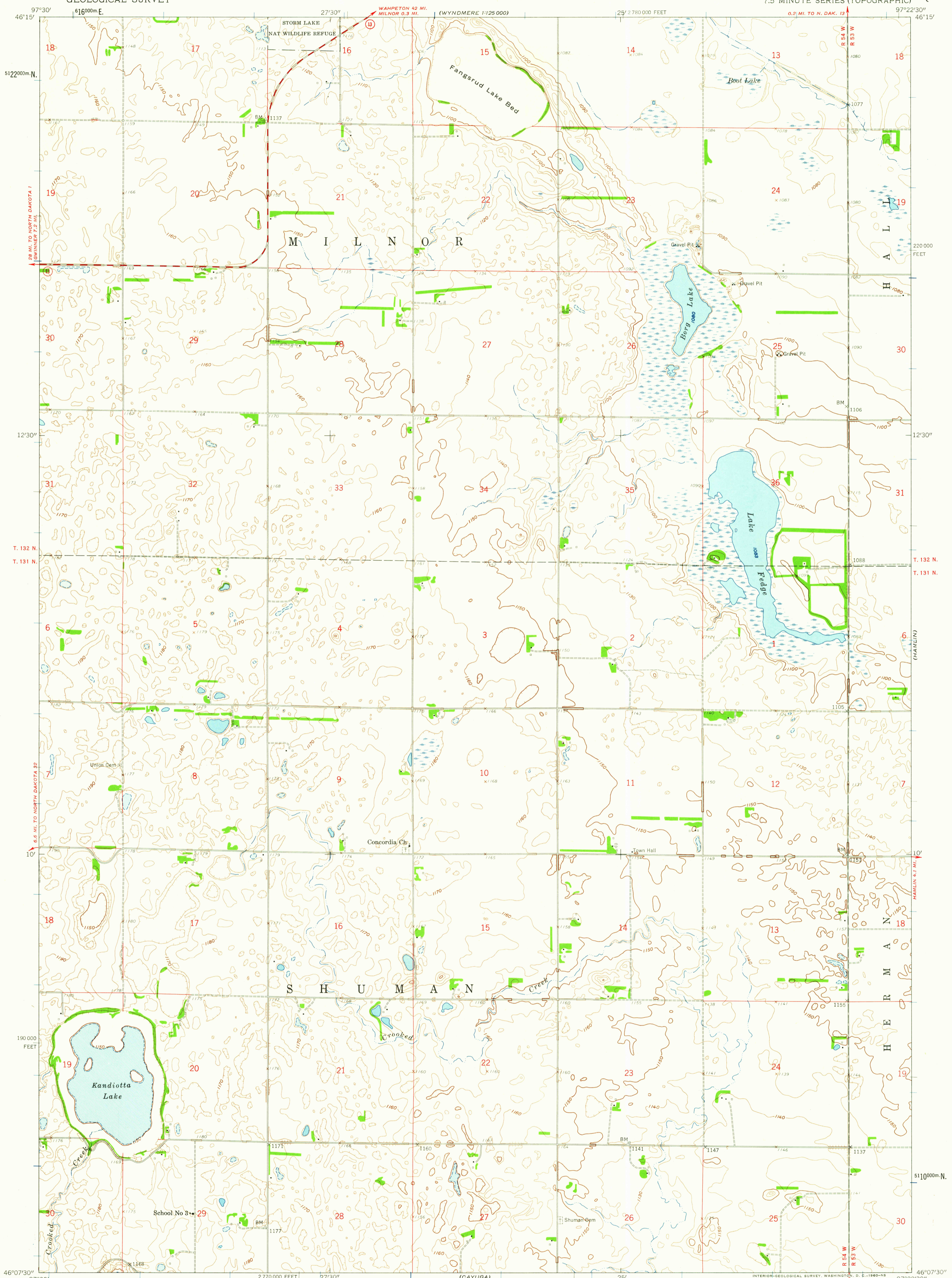
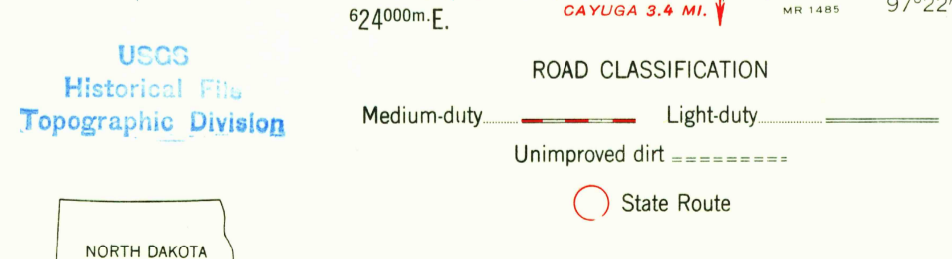
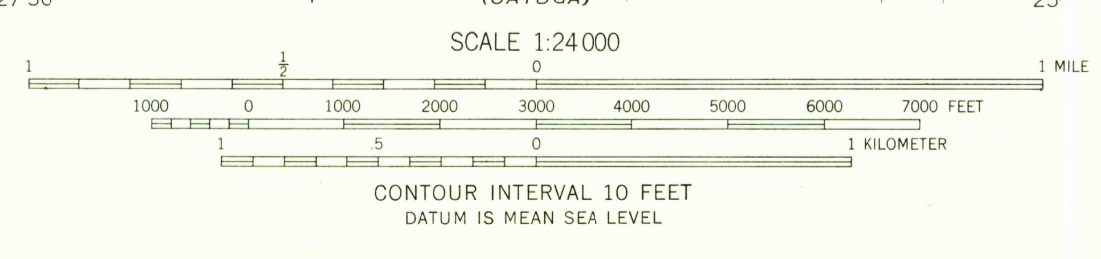


(WYNDMERE 1:125 000)



Mapped, edited, and published by the Geological Survey as part of the Department of the Interior program for the development of the Missouri River Basin. Control by USGS and USC&GS. Topography from aerial photographs by photogrammetric methods. Aerial photographs taken 1956. Field check 1958. Polyconic projection. 1927 North American datum. 10,000-foot grid based on North Dakota coordinate system, south zone. 1000-meter Universal Transverse Mercator grid ticks, zone 14, shown in blue.

TRUE NORTH
MAGNETIC NORTH
APPROXIMATE MEAN DECLINATION, 1958



CAYUGA NW, N. DAK.
N4607.5-W9722.5/7.5
1958

U.S.G.S.
FILE COPY
TOPOGRAPHIC DIVISION

JAN 26 1980