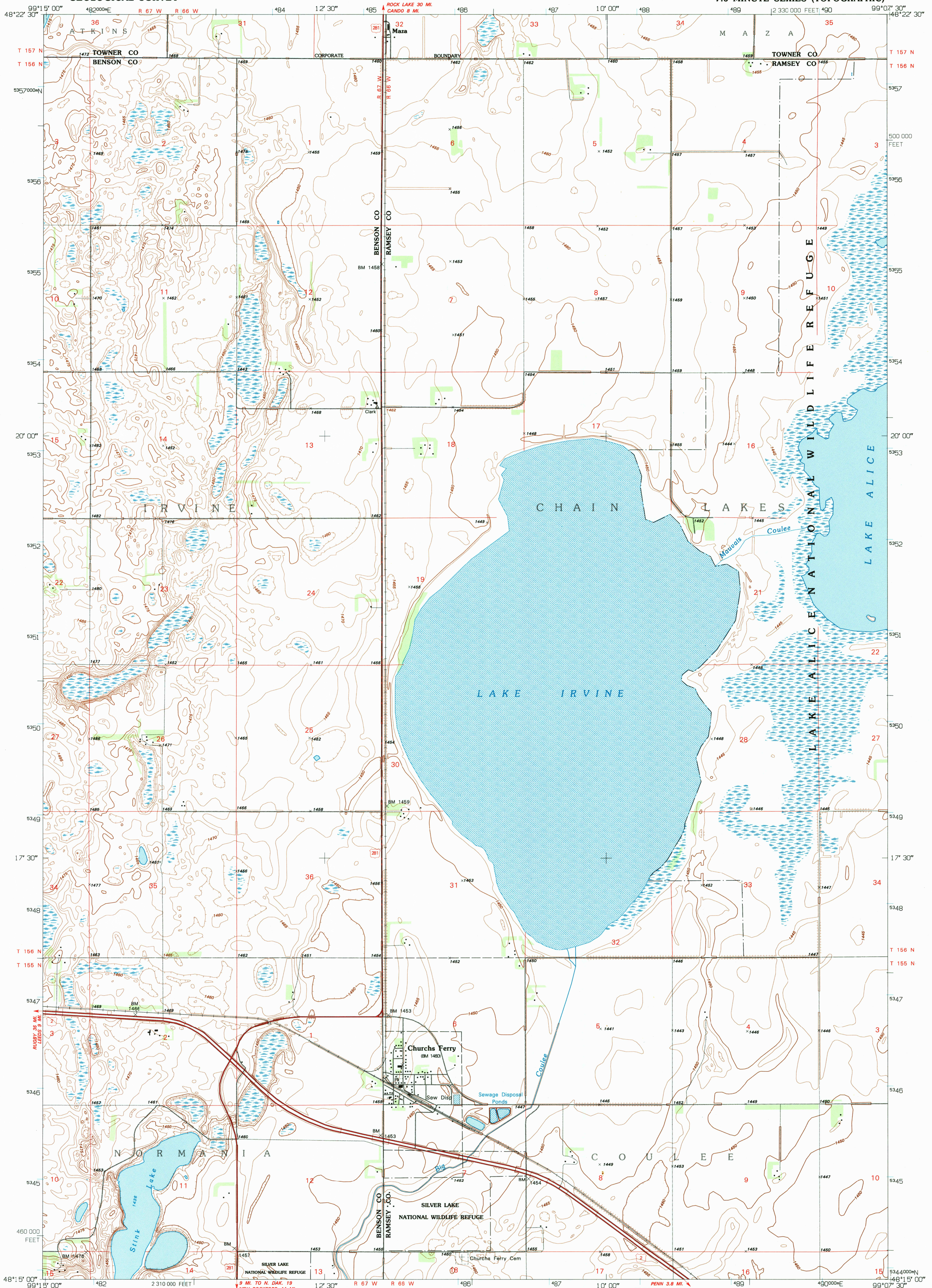


UNITED STATES  
DEPARTMENT OF THE INTERIOR  
GEOLOGICAL SURVEY

CHURCHS FERRY QUADRANGLE  
NORTH DAKOTA  
7.5 MINUTE SERIES (TOPOGRAPHIC)



Produced by the United States Geological Survey

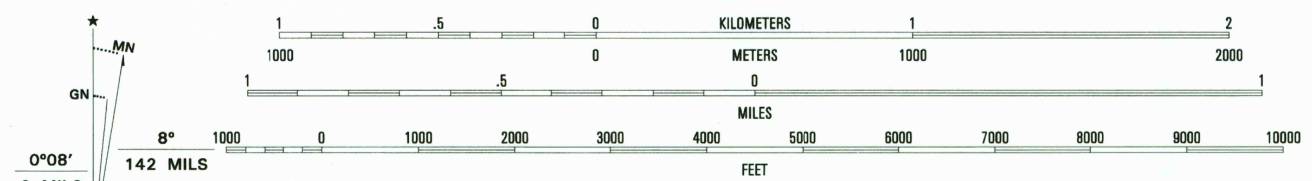
Control by USGS and NOS/NOAA

Planimetry by photogrammetric methods from aerial photographs taken 1940, 1944 and 1951. Topography by planetair surveys 1957 Revised from aerial photographs taken 1990. Field checked 1993 Map edited 1994

North American Datum of 1927 (NAD 27). Projection and blue 1000-meter ticks: Universal Transverse Mercator, zone 14 10,000-foot ticks: North Dakota coordinate system, north zone

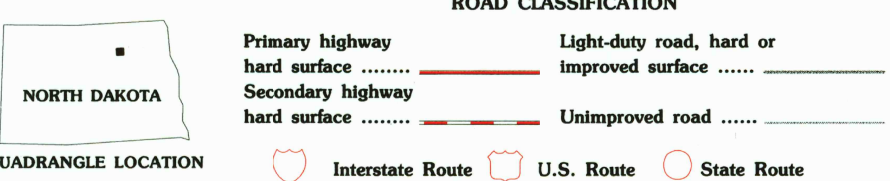
North American Datum of 1983 (NAD 83) is shown by dashed corner ticks. The values of the shift between NAD 27 and NAD 83 for 7.5-minute intersections are obtainable from National Geodetic Survey NADCON software

There may be private inholdings within the boundaries of the National or State reservations shown on this map



CONTOUR INTERVAL 5 FEET  
NATIONAL GEODETIC VERTICAL DATUM OF 1929

THIS MAP COMPLIES WITH NATIONAL MAP ACCURACY STANDARDS  
FOR SALE BY U.S. GEOLOGICAL SURVEY  
DENVER, COLORADO 80225, OR RESTON, VIRGINIA 22092  
AND NORTH DAKOTA GEOLOGICAL SURVEY, BISMARCK, NORTH DAKOTA 58505  
A FOLDER DESCRIBING TOPOGRAPHIC MAPS AND SYMBOLS IS AVAILABLE ON REQUEST



|   |   |   |
|---|---|---|
| 1 | 2 | 3 |
| 4 | 5 | 6 |
| 7 | 8 |   |

1 Leads NE  
2 Cando  
3 Cando NE  
4 Miles  
5 Cando SE  
6 Brinsmade  
7 Tilden  
8 Penn

CHURCHS FERRY, N. DAK.  
48099-C2-TF-024  
1994

DMA 6180 1 SW-SERIES V871

