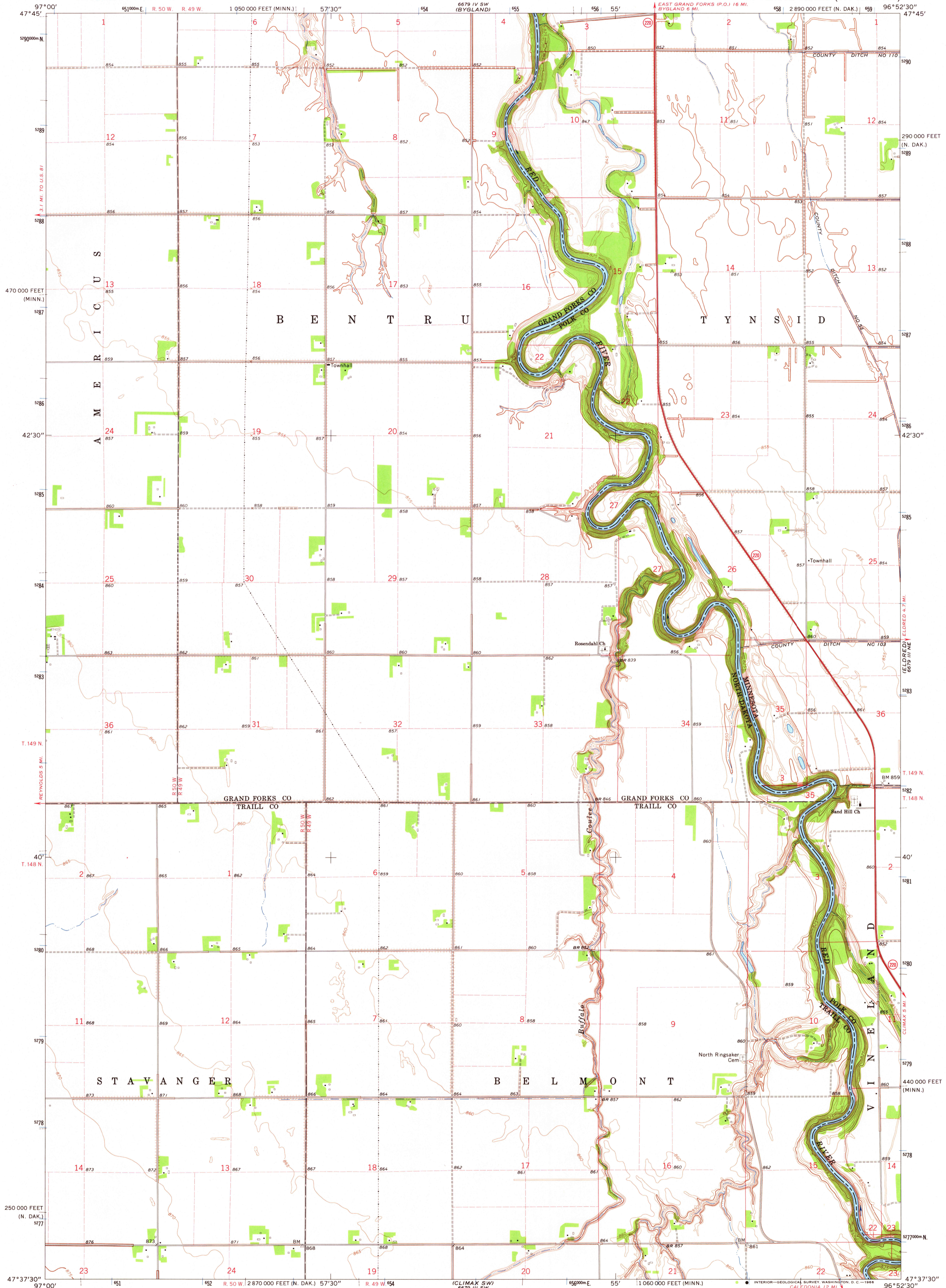


UNITED STATES  
DEPARTMENT OF THE INTERIOR  
GEOLOGICAL SURVEY

CLIMAX NW QUADRANGLE  
NORTH DAKOTA-MINNESOTA  
7.5 MINUTE SERIES (TOPOGRAPHIC)

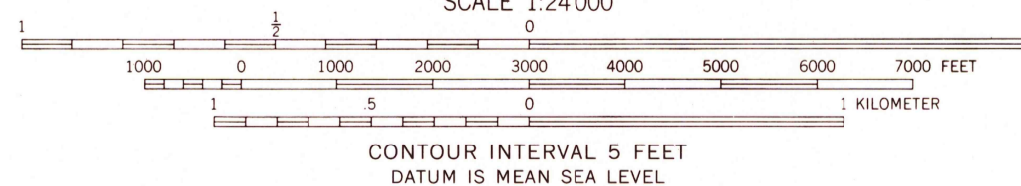
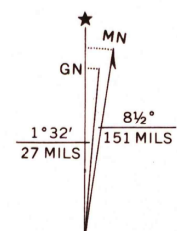


Mapped, edited, and published by the Geological Survey  
Control by USGS and USC&GS

Planimetry by photogrammetric methods from aerial photographs  
taken 1961. Topography by planetable surveys 1964

Polyconic projection. 1927 North American datum  
10,000-foot grids based on North Dakota coordinate system,  
north zone and Minnesota coordinate system, north zone  
1000-meter Universal Transverse Mercator grid ticks,  
zone 14, shown in blue

Fine red dashed lines indicate selected fence and field lines  
where generally visible on aerial photographs  
This information is unchecked



USGS  
Historical File  
Topographic Division

ROAD CLASSIFICATION  
Heavy-duty — Light-duty  
Unimproved dirt —  
State Route



THIS MAP COMPLIES WITH NATIONAL MAP ACCURACY STANDARDS  
FOR SALE BY U. S. GEOLOGICAL SURVEY, DENVER, COLORADO 80225 OR WASHINGTON, D. C. 20241  
AND BY THE STATE WATER COMMISSION, BISMARCK, NORTH DAKOTA  
A FOLDER DESCRIBING TOPOGRAPHIC MAPS AND SYMBOLS IS AVAILABLE ON REQUEST

CLIMAX NW, N. DAK.-MINN.  
N4737.5—W9652.5/7.5

1964

AMS 6679 III NW—SERIES V871

2585  
JAN 10 1965  
U.S.G.S.  
FILE COPY  
TOPOGRAPHIC DIVISION