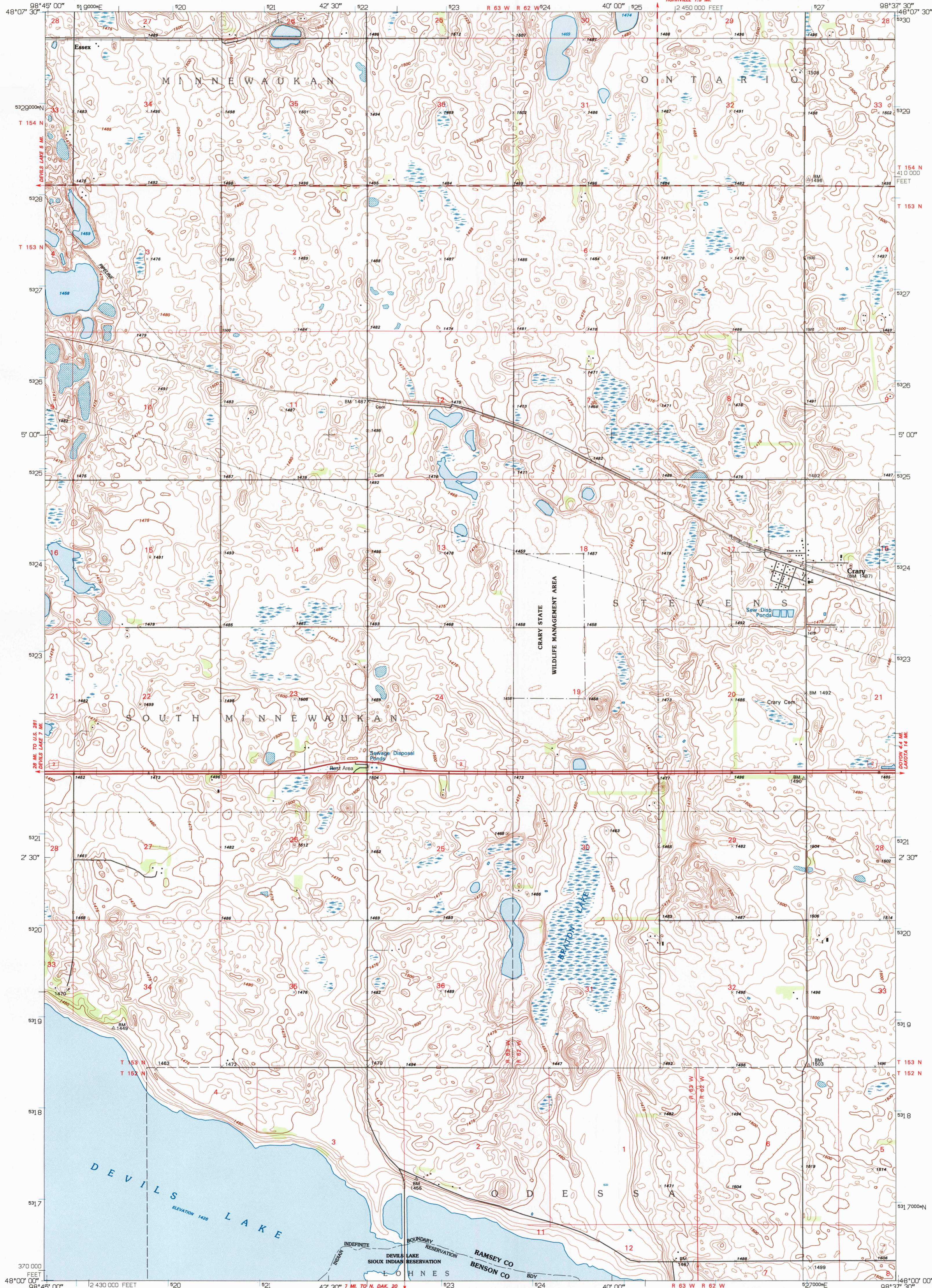


UNITED STATES
DEPARTMENT OF THE INTERIOR
GEOLOGICAL SURVEY

CRARY QUADRANGLE
NORTH DAKOTA
7.5 MINUTE SERIES (TOPOGRAPHIC)



Produced by the United States Geological Survey
Control by USGS and NOS/NOAA

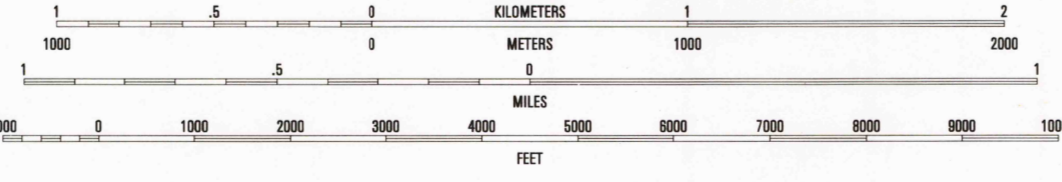
Planimetry by photogrammetric methods from aerial photographs taken 1944 and 1949. Topography by plane-table surveys 1950. Revised from aerial photographs taken 1990. Field checked 1993. Map edited 1994.

Universal Transverse Mercator projection
10,000-foot grid ticks: North Dakota coordinate system, north zone
1000-meter Universal Transverse Mercator grid ticks, zone 14, shown in blue
1927 North American Datum (NAD 27)

North American Datum of 1983 (NAD 83) is shown by dashed corner ticks
The values of the shift between NAD 27 and 83 for 7.5-minute
intersections are given in USGS Bulletin 1875

There may be private inholdings within the boundaries of
the National or State reservations shown on this map

SCALE 1:24000



CONTOUR INTERVAL 5 FEET
NATIONAL GEODETIC VERTICAL DATUM OF 1929

COMPLIES WITH U.S. GEOLOGICAL SURVEY STANDARDS FOR SPATIAL ACCURACY - CLASS 2
FOR SALE BY U.S. GEOLOGICAL SURVEY
DENVER, COLORADO 80225, OR RESTON, VIRGINIA 22092
AND NORTH DAKOTA GEOLOGICAL SURVEY, BISMARCK, NORTH DAKOTA 58505
A FOLDER DESCRIBING TOPOGRAPHIC MAPS AND SYMBOLS IS AVAILABLE ON REQUEST

INTERIOR - GEOLOGICAL SURVEY, RESTON, VIRGINIA - 1995

ROAD CLASSIFICATION

Primary highway
hard surface
Secondary highway
hard surface
Unimproved road

Light-duty road, hard or
improved surface

Interstate Route U.S. Route State Route

QUADRANGLE LOCATION

1 2 3
4 5
6 7 8

1 Sweetwater
2 Crary NW
3 Southam
4 Devils Lake
5 Dogan
6 Tanka
7 Free Peoples Lake
8 Devils Lake Mtn.

CRARY, N. DAK.
48098-A6-TF-024
1994

DMA 6280 II SW - SERIES Y871

