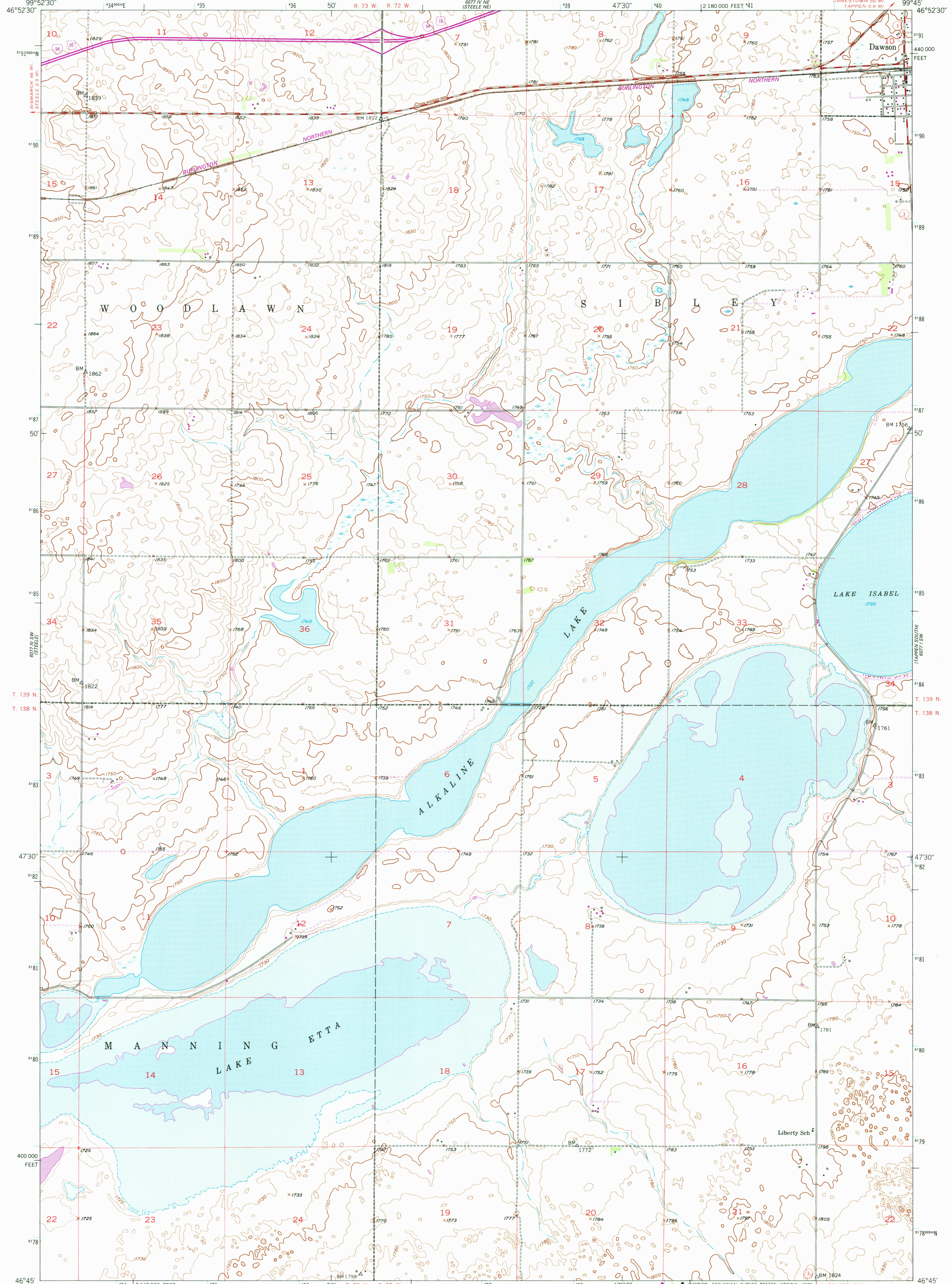
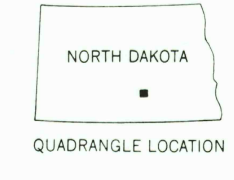
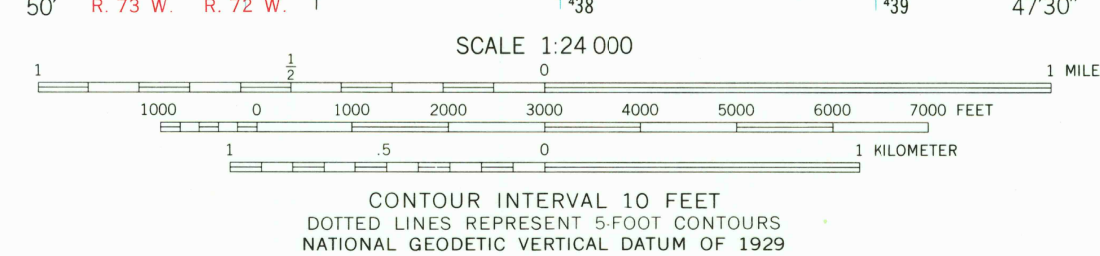
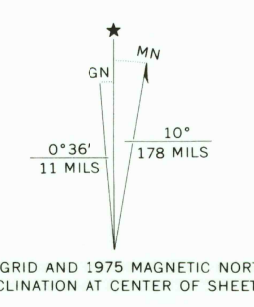


607' 1/4" (STATE) 44 MI.

607' 1/4" (TAPPAN) 5.9 MI.



Mapped, edited, and published by the Geological Survey
Control by USGS and USC&GS
Culture and drainage in part compiled from aerial photographs taken 1951. Topography by plane-table surveys 1952
Polyconic projection. 1927 North American datum
10,000-foot grid based on North Dakota coordinate system, south zone
1,000-meter Universal Transverse Mercator grid ticks, zone 14, shown in blue
Revisions shown in purple compiled from aerial photographs taken 1975. This information not field checked



ROAD CLASSIFICATION

Primary highway, all weather, hard surface	Light-duty road, all weather, improved surface
Secondary highway, all weather, hard surface	Unimproved road, fair or dry weather

○ Interstate Route □ U. S. Route ○ State Route

THIS MAP COMPLIES WITH NATIONAL MAP ACCURACY STANDARDS FOR SALE BY U. S. GEOLOGICAL SURVEY, DENVER, COLORADO 80225, OR RESTON, VIRGINIA 22092 AND BY THE STATE WATER COMMISSION, BISMARCK, NORTH DAKOTA 58501 A FOLDER DESCRIBING TOPOGRAPHIC MAPS AND SYMBOLS IS AVAILABLE ON REQUEST

USGS Historical File Topographic Division
DAWSON, N. DAK.
N4645-W9945/7.5
1952 PHOTOREVISED 1975
AMS 6077 IV SE-SERIES V871

AUG 2 2 1978

2900