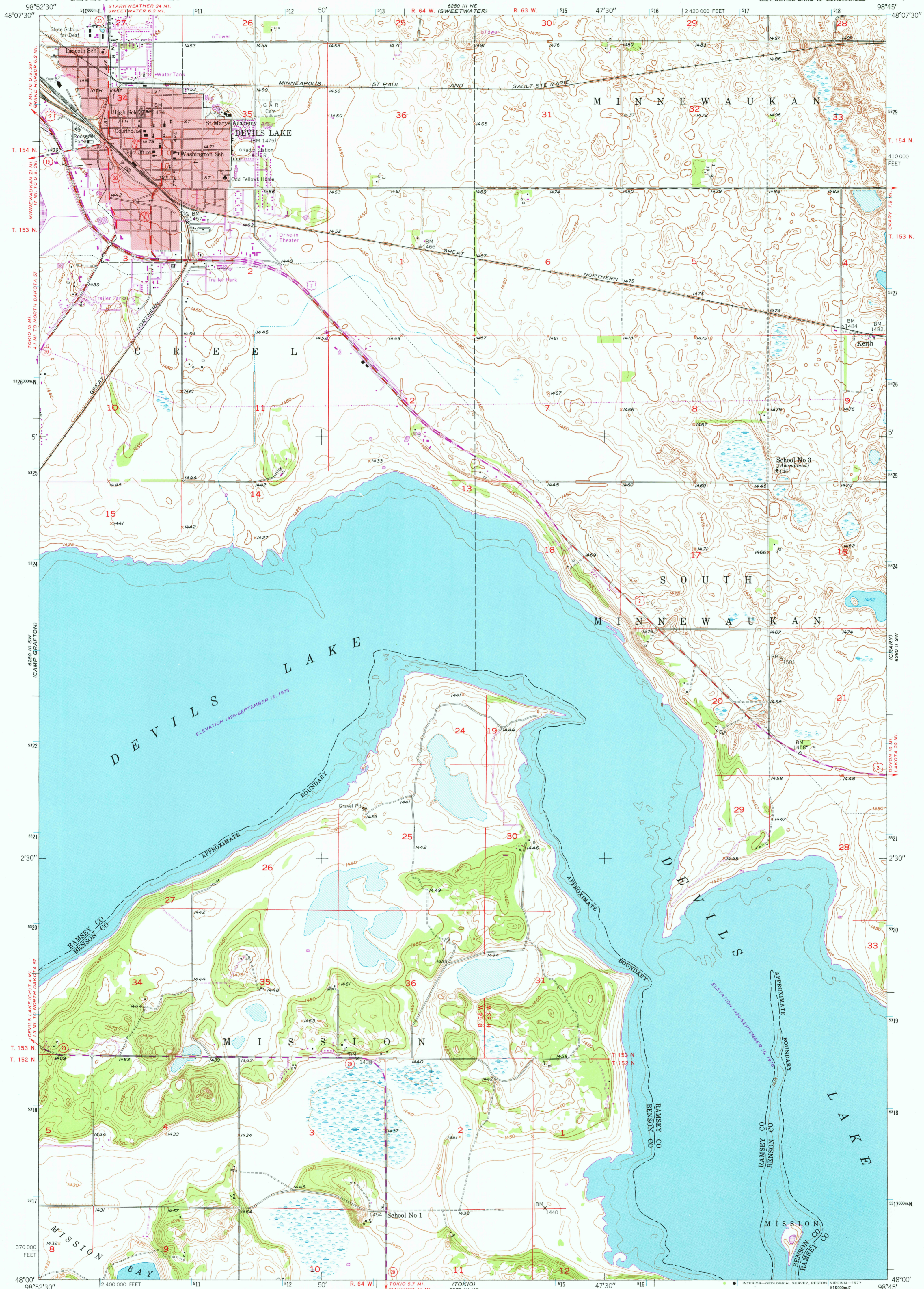
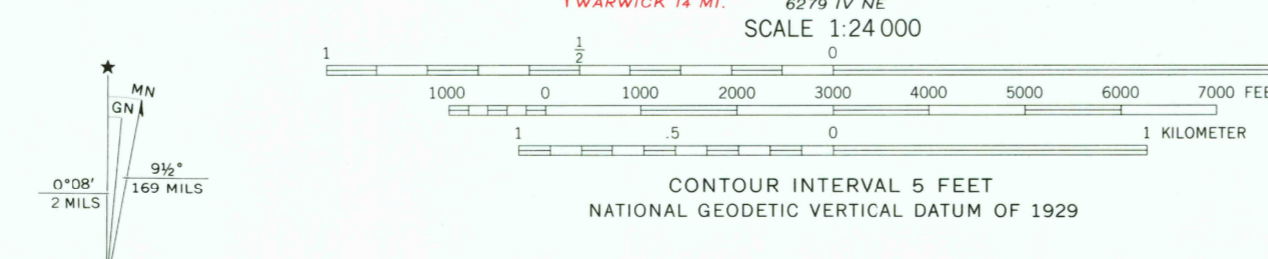


UNITED STATES  
DEPARTMENT OF THE INTERIOR  
GEOLOGICAL SURVEY

DEVILS LAKE QUADRANGLE  
NORTH DAKOTA  
7.5 MINUTE SERIES (TOPOGRAPHIC)  
SE/4 DEVILS LAKE 15' QUADRANGLE



Mapped, edited, and published by the Geological Survey as part of the Department of the Interior program for the development of the Missouri River Basin Control by USGS and USC&GS  
Culture and drainage in part compiled from aerial photographs taken 1949  
Topography by plane-table methods 1949-1950  
Polyconic projection. 1927 North American datum 10,000-foot grid based on North Dakota coordinate system, north zone  
Red tint indicates area in which only landmark buildings are shown  
1000-meter Universal Transverse Mercator grid ticks, zone 14, shown in blue



ROAD CLASSIFICATION  
Heavy-duty... 4 LANE 16 LANE  
Medium-duty... 4 LANE 16 LANE  
Light duty...  
Unimproved dirt...  
U. S. Route  
State Route

THIS MAP COMPLIES WITH NATIONAL MAP ACCURACY STANDARDS  
FOR SALE BY U. S. GEOLOGICAL SURVEY, DENVER, COLORADO 80225, OR RESTON, VIRGINIA 22092  
AND STATE WATER COMMISSION, BISMARCK, NORTH DAKOTA 58501  
A FOLDER DESCRIBING TOPOGRAPHIC MAPS AND SYMBOLS IS AVAILABLE ON REQUEST

DEVILS LAKE, N. DAK.  
SE/4 DEVILS LAKE 15' QUADRANGLE  
N4800—W9845/7.5  
1951  
PHOTOREVISED 1975  
AMS 6280 III SE—SERIES V871

2700  
SEP 23 1977