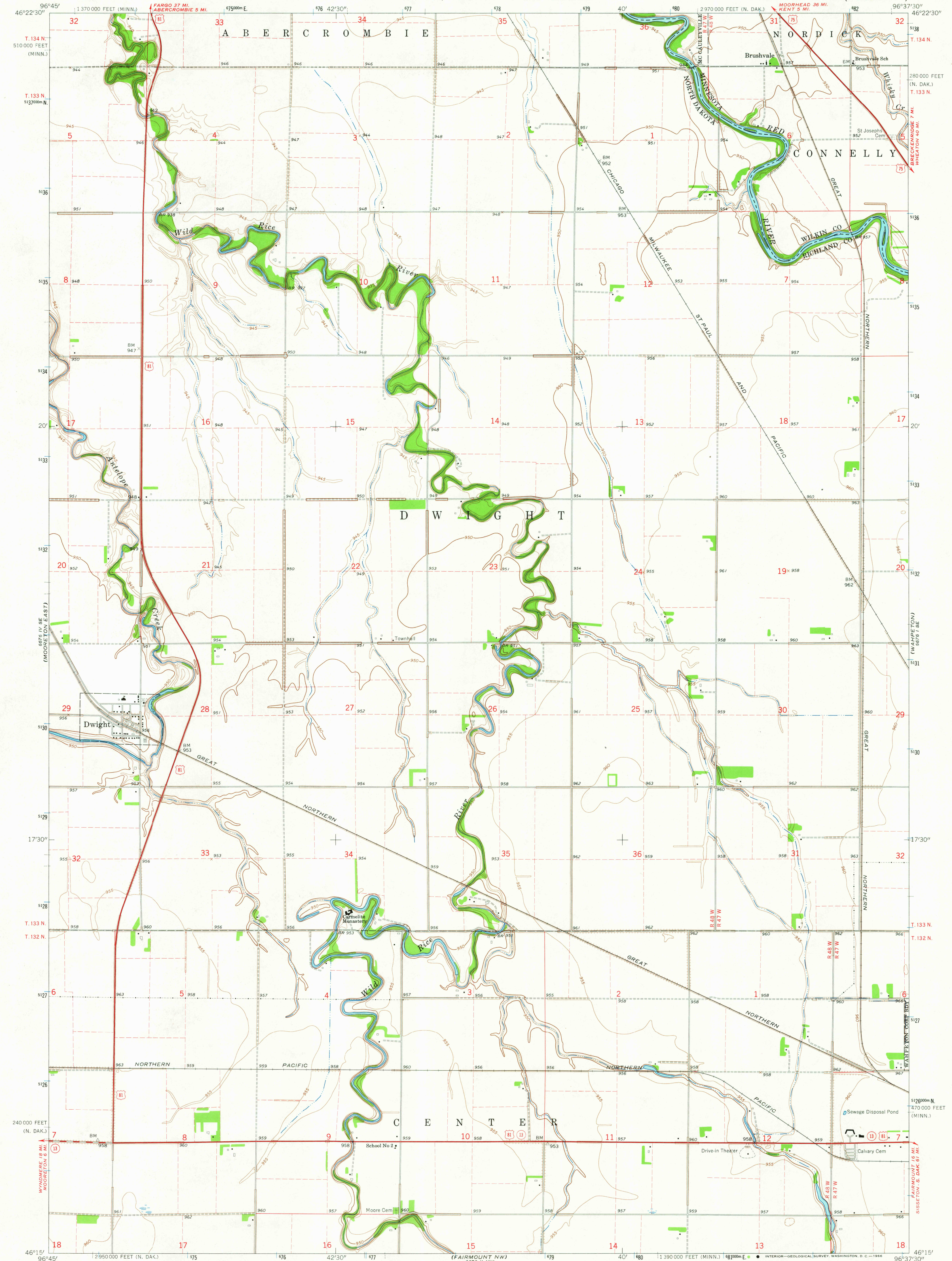


52° 15' N
96° 45' W
(GREAT LAKES)

UNITED STATES
DEPARTMENT OF THE INTERIOR
GEOLOGICAL SURVEY

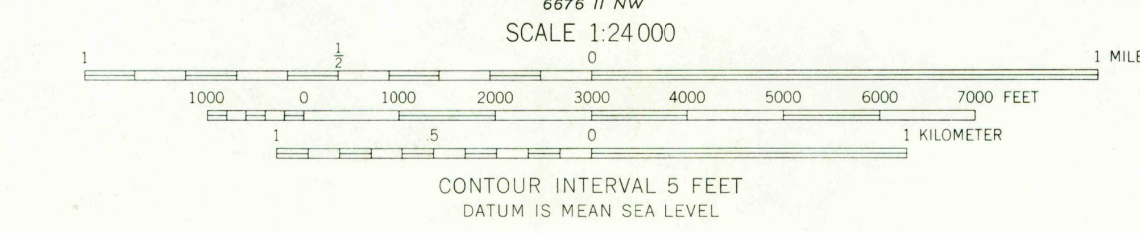
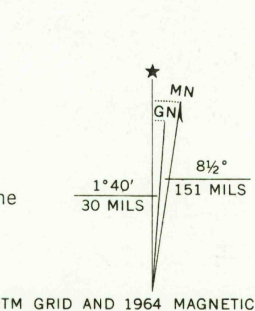
STATE OF NORTH DAKOTA
WATER COMMISSION
GOVERNOR WILLIAM L. GUY, CHAIRMAN
MILO W. HOISVEEN, SECRETARY AND CHIEF ENGINEER

DWIGHT QUADRANGLE
NORTH DAKOTA-MINNESOTA
7.5 MINUTE SERIES (TOPOGRAPHIC)



(GREAT BEYD)
95° 45' W
96° 15' W

Mapped, edited, and published by the Geological Survey
Control by USGS and USC&GS
Planimetry by photogrammetric methods from aerial photographs
taken 1963. Topography by planetable surveys 1964
Polyconic projection. 1927 North American datum
10,000-foot grid based on North Dakota coordinate system, south zone
and Minnesota coordinate system, central zone
1000-meter Universal Transverse Mercator grid ticks,
zone 14, shown in blue
Fine red dashed lines indicate selected fence and field lines
generally visible on aerial photographs. This information is unchecked



USGS
Historical File
Topographic Division

ROAD CLASSIFICATION
Heavy-duty ——— Light-duty ———
Medium-duty ——— Unimproved dirt ———
U. S. Route ——— State Route ———



DWIGHT, N. DAK.-MINN.
N4615-W9637.5/7.5

THIS MAP COMPLIES WITH NATIONAL MAP ACCURACY STANDARDS
FOR SALE BY U.S. GEOLOGICAL SURVEY, DENVER, COLORADO 80225 OR WASHINGTON, D. C. 20242
AND BY THE STATE WATER COMMISSION, BISMARCK, NORTH DAKOTA
A FOLDER DESCRIBING TOPOGRAPHIC MAPS AND SYMBOLS IS AVAILABLE ON REQUEST

1964
AMS 6676 1 SW-SERIES V871

U.S.G.S.
FINE COPY
TOPOGRAPHIC DIVISION

2150
APR 20 1966