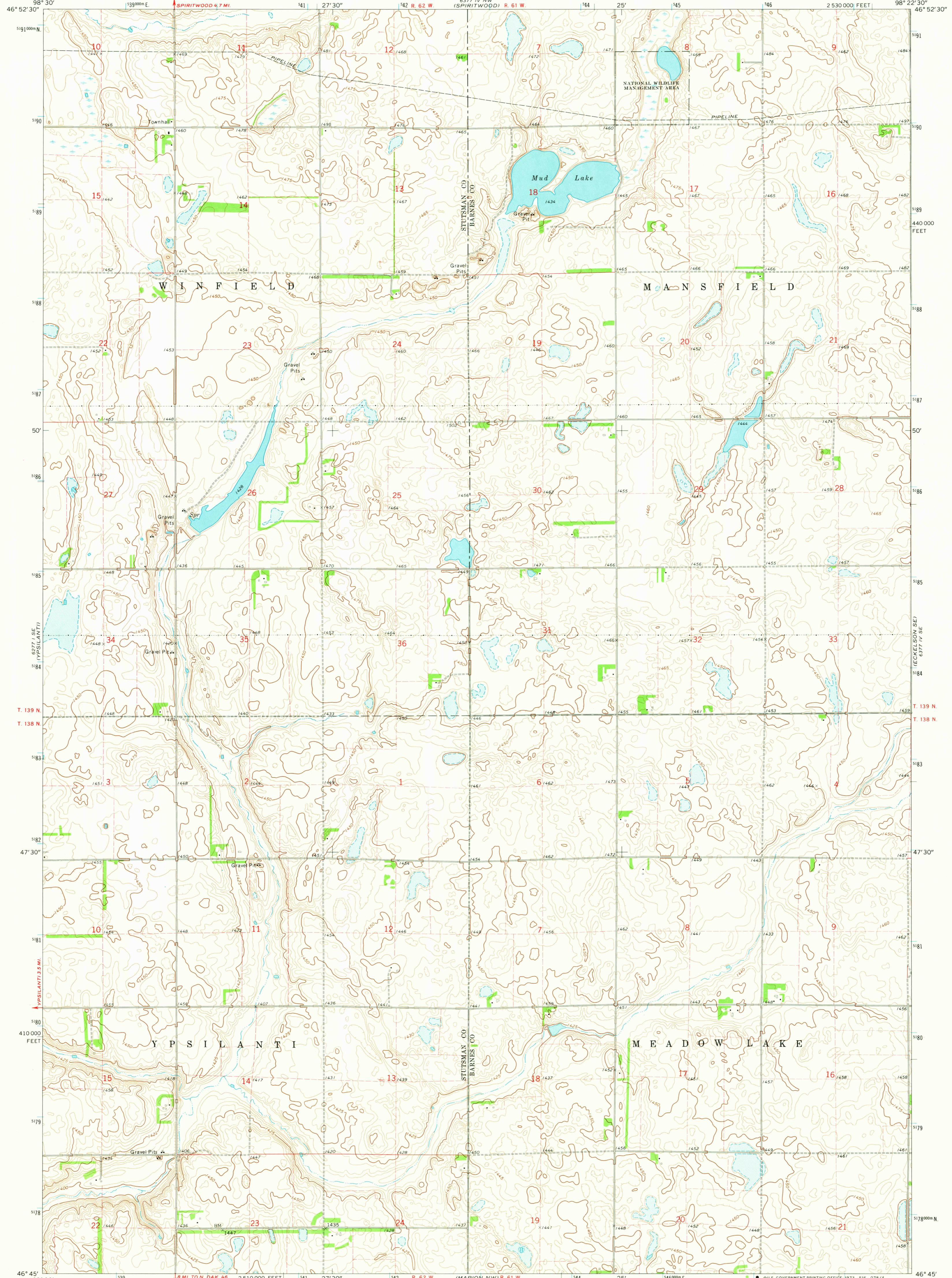


6377 IV NE
ECKELSON

UNITED STATES
DEPARTMENT OF THE INTERIOR
GEOLOGICAL SURVEY

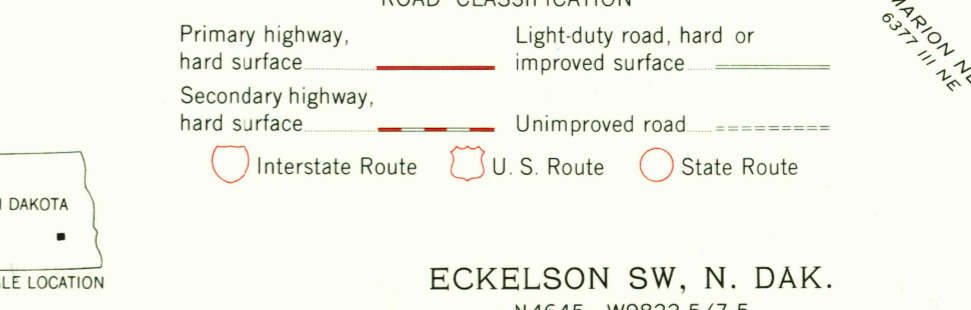
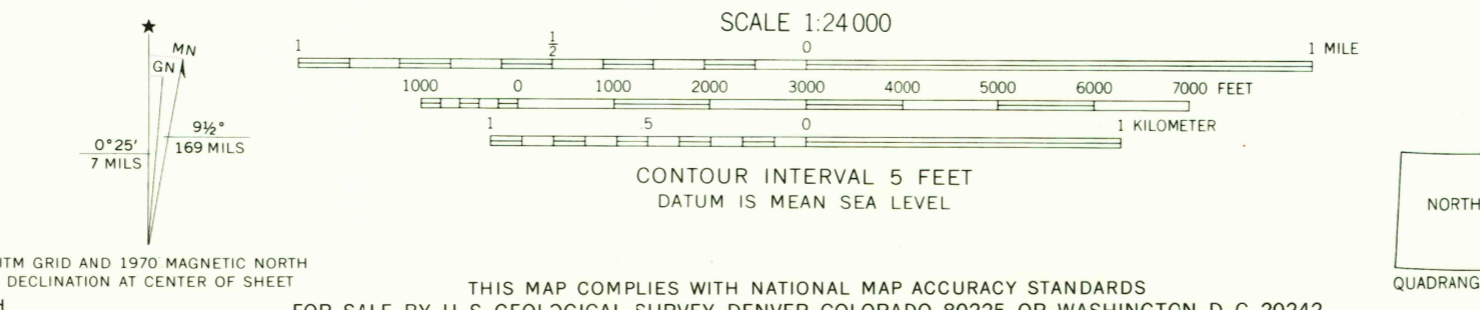
ECKELSON SW QUADRANGLE
NORTH DAKOTA
7.5 MINUTE SERIES (TOPOGRAPHIC)

6377 IV NE
ECKELSON



Mapped, edited, and published by the Geological Survey

Control by USGS and USC&GS
Topography by photogrammetric methods from aerial
photographs taken 1969. Field checked 1970
Polyconic projection. 1927 North American datum
10,000-foot grid based on North Dakota coordinate system,
south zone
1000-meter Universal Transverse Mercator grid ticks,
zone 14, shown in blue
Fine red dashed lines indicate selected fence and field lines where
generally visible on aerial photographs. This information is unchecked



THIS MAP COMPLIES WITH NATIONAL MAP ACCURACY STANDARDS
FOR SALE BY U.S. GEOLOGICAL SURVEY, DENVER, COLORADO 80225, OR WASHINGTON, D. C. 20242
AND BY THE STATE WATER COMMISSION, BISMARCK, NORTH DAKOTA 58501
A FOLDER DESCRIBING TOPOGRAPHIC MAPS AND SYMBOLS IS AVAILABLE ON REQUEST

ECKELSON SW, N. DAK.
N4645-W9822.5/7.5
1970

Hoew
2000
USGS
HISTORICAL FILE
GEOGRAPHIC DIVISION
APR 9 1978

AMS 6377 IV SW—SERIES V871