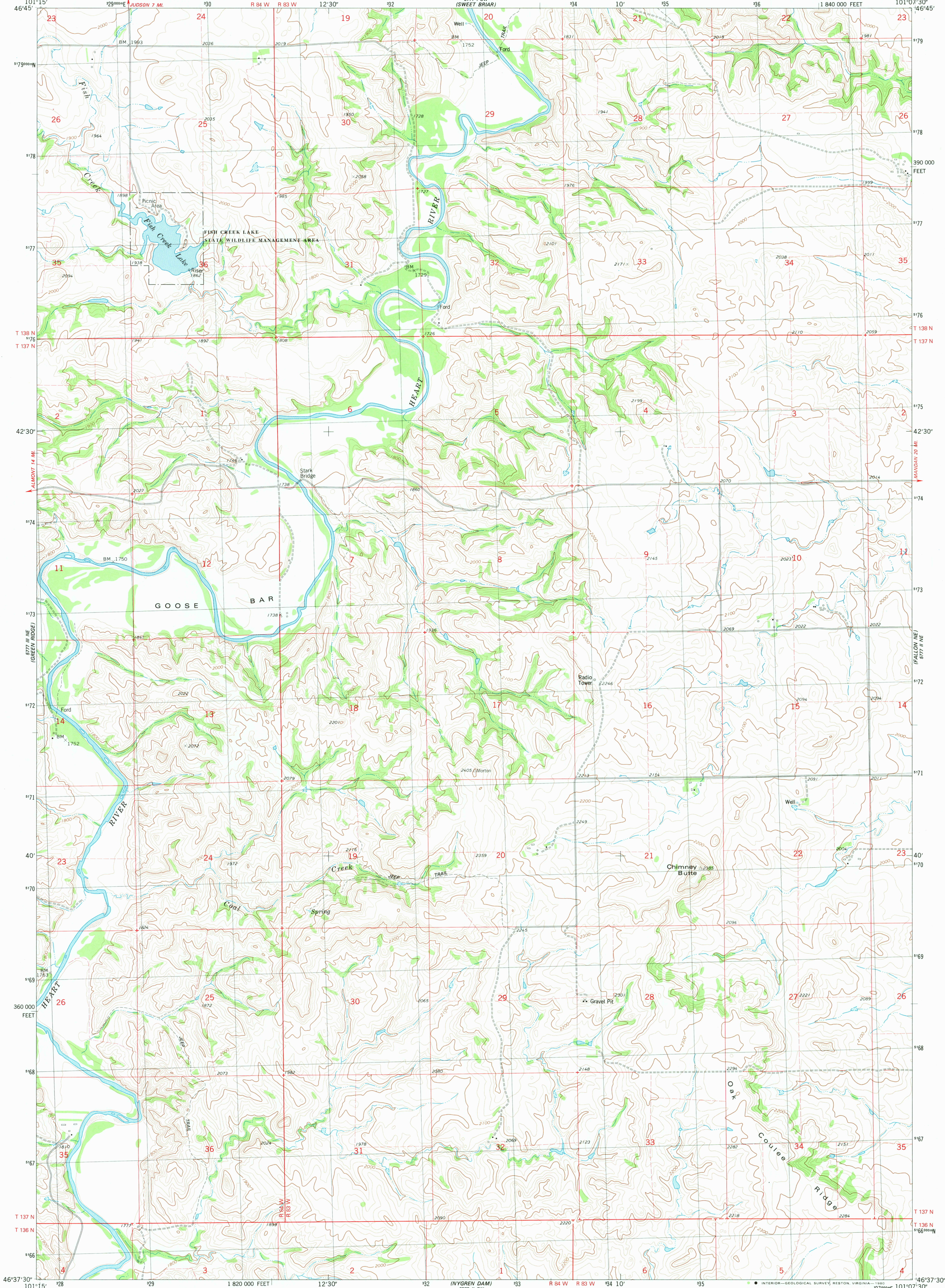


5771.35
JUDSON

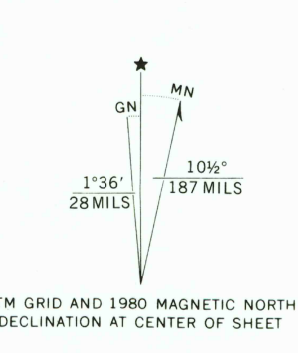
UNITED STATES
DEPARTMENT OF THE INTERIOR
GEOLOGICAL SURVEY

FISH CREEK LAKE QUADRANGLE
NORTH DAKOTA—MORTON CO.
7.5 MINUTE SERIES (TOPOGRAPHIC)

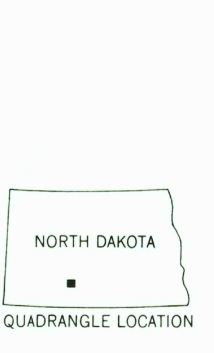
5771.35
(CROWN BUTTE LAKE)



Mapped, edited, and published by the Geological Survey
Control by USGS and NOS/NOAA
Topography by photogrammetric methods from aerial photographs
taken 1974. Field checked 1975. Map edited 1980
Projection and 10,000-foot grid ticks: North Dakota
coordinate system, south zone (Lambert conformal conic)
1000-meter Universal Transverse Mercator grid, zone 14
1927 North American datum
To place on the predicted North American Datum 1983
move the projection lines 5 meters north and
35 meters east as shown by dashed corner ticks
Fine red dashed lines indicate selected fence lines
There may be private inholdings within the boundaries of the
National or State reservations shown on this map



CONTOUR INTERVAL 20 FEET
NATIONAL GEODETIC VERTICAL DATUM OF 1929
THIS MAP COMPLIES WITH NATIONAL MAP ACCURACY STANDARDS
FOR SALE BY U.S. GEOLOGICAL SURVEY, DENVER, COLORADO 80225, OR RESTON, VIRGINIA 22092
AND BY THE STATE WATER COMMISSION, BISMARCK, NORTH DAKOTA 58501
A FOLDER DESCRIBING TOPOGRAPHIC MAPS AND SYMBOLS IS AVAILABLE ON REQUEST



ROAD CLASSIFICATION
Primary highway, hard surface
Secondary highway, hard surface
Unimproved road
Light-duty road, hard or improved surface
Unimproved road
Interstate Route
U. S. Route
State Route

FISH CREEK LAKE, N. DAK.
N4637.5—W10107.5/7.5

1980

DMA 5771 II NW—SERIES V871

USGS
Historical File
Topographic Division

1900
Nov 17 1980