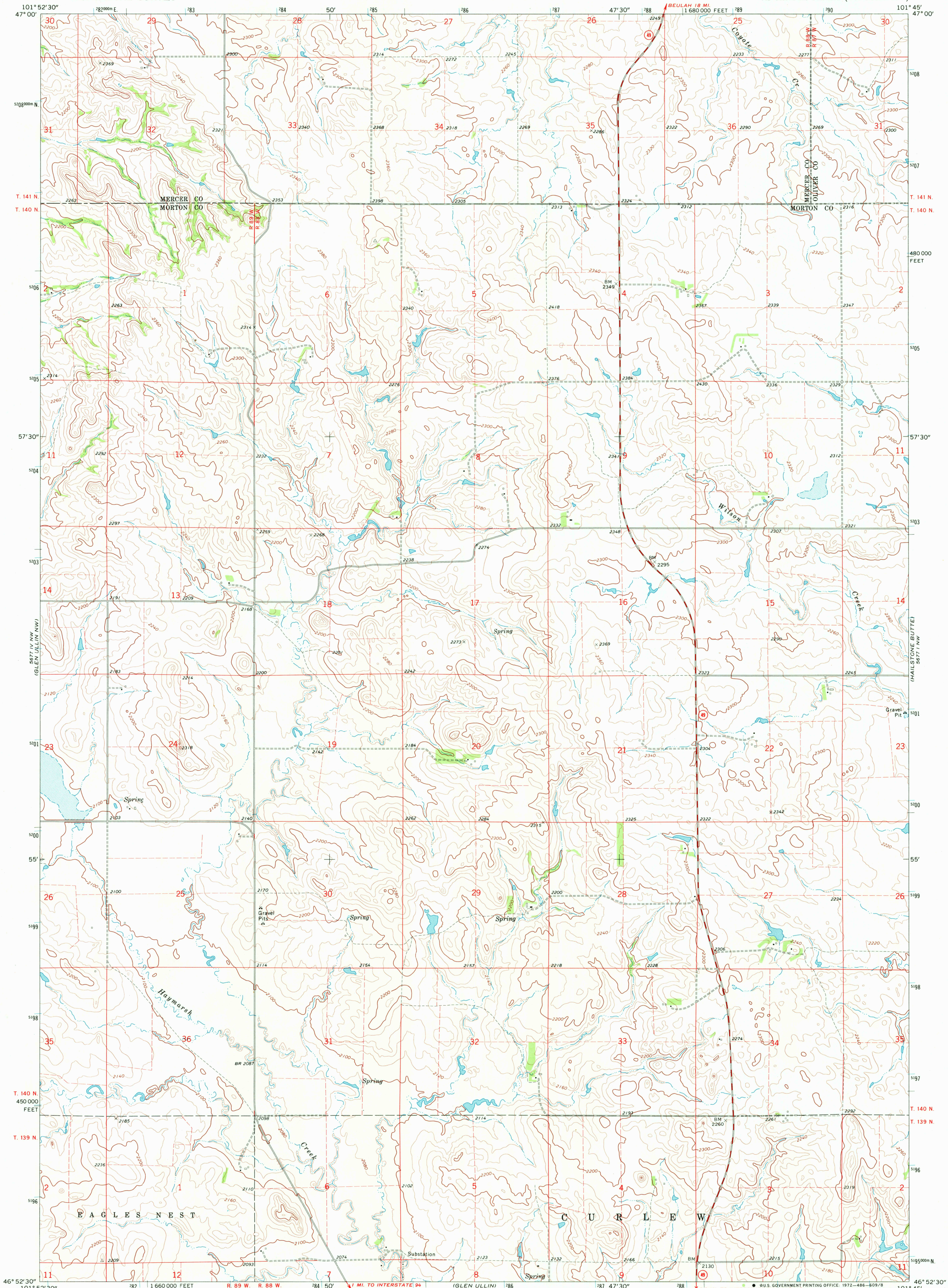
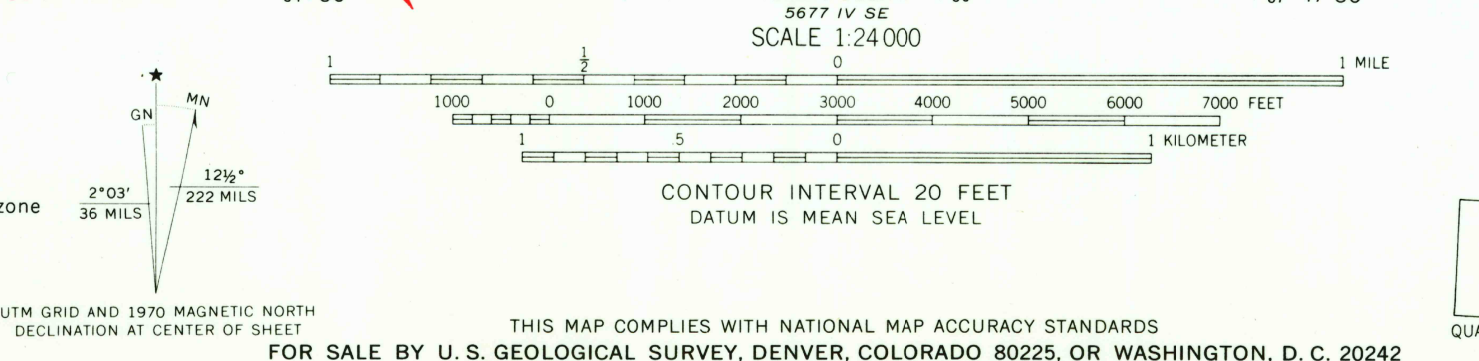


UNITED STATES  
DEPARTMENT OF THE INTERIOR  
GEOLOGICAL SURVEY

GLEN ULLIN NE QUADRANGLE  
NORTH DAKOTA  
7.5 MINUTE SERIES (TOPOGRAPHIC)



Mapped, edited, and published by the Geological Survey  
Control by USGS and USC&GS  
Topography by photogrammetric methods from aerial photographs taken 1967. Field checked 1970  
Polyconic projection. 1927 North American datum 10,000-foot grid based on North Dakota coordinate system, south zone 1000-meter Universal Transverse Mercator grid ticks, zone 14, shown in blue  
Fine red dashed lines indicate selected fence and field lines where generally visible on aerial photographs  
This information is unchecked



ROAD CLASSIFICATION  
Primary highway, hard surface ———— Light-duty road, hard or improved surface ————  
Secondary highway, hard surface ———— Unimproved road ————  
○ Interstate Route ○ U.S. Route ○ State Route

GLEN ULLIN NE, N. DAK.  
N4652.5-W10145.7.5  
1970  
AMS 5677 IV NE—SERIES V871

444  
2000  
50plmi  
JAN 30 1973  
USGS  
HISTORICAL FILE  
TOPOGRAPHIC DIVISION