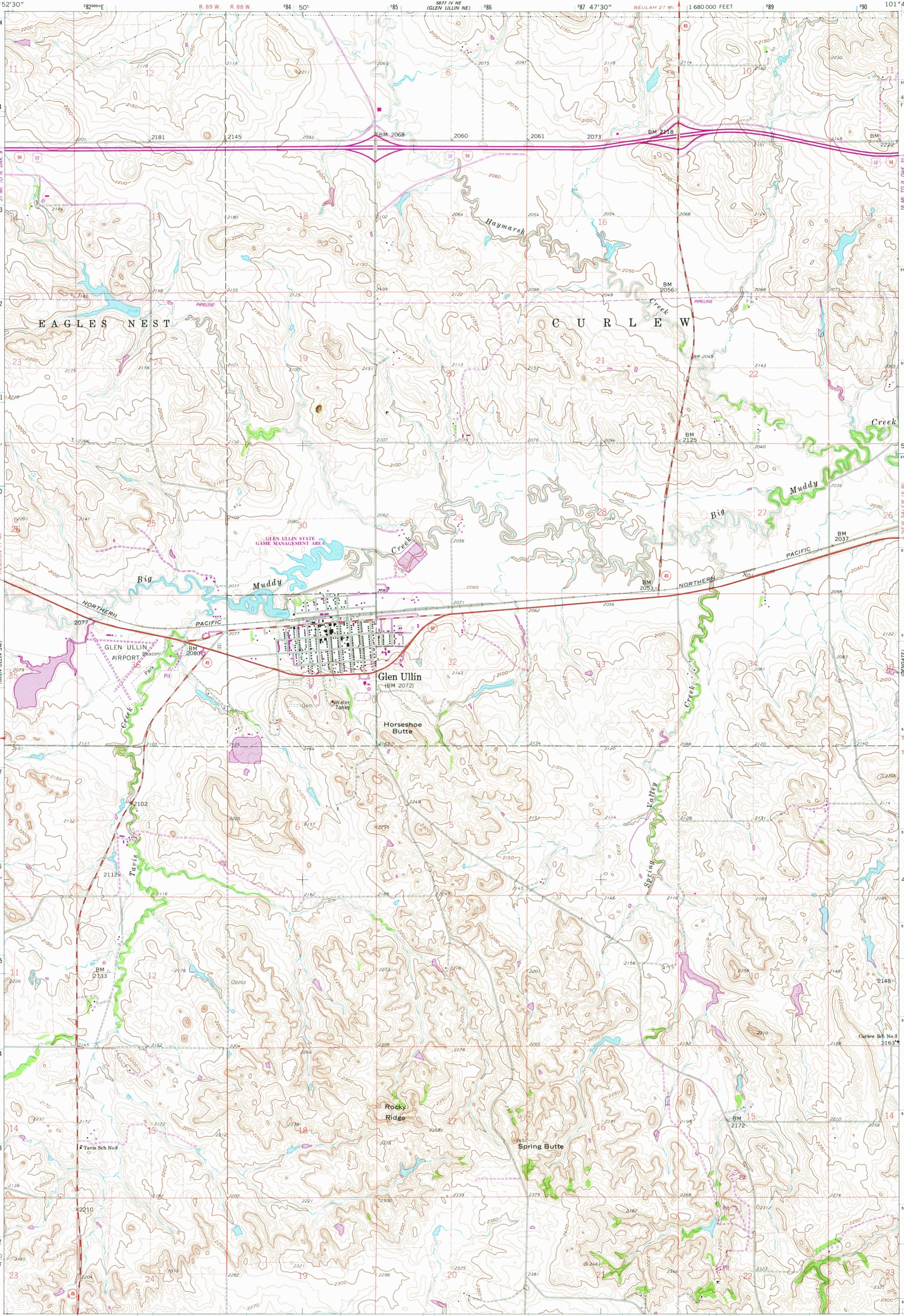
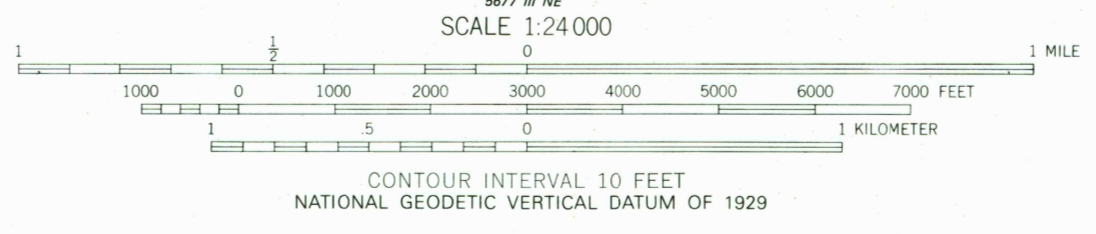
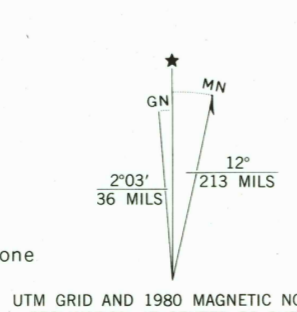


101°52'30" 46°52'30" 1950000 N
194
193
192
191
190
189
188
187
186
185
184
183
182
181
180
46°45' 101°45'

101°45' 46°52'30" 194
193
192
191
190
189
188
187
186
185
184
183
182
181
180
46°45' 101°45'



Mapped, edited, and published by the Geological Survey as part of the Department of the Interior program for the development of the Missouri River Basin Control by USGS and USC&GS
Topography by photogrammetric methods from aerial photographs taken 1958. Field checked 1960
Polyconic projection. 1927 North American datum 10,000-foot grid based on North Dakota coordinate system, south zone 1000-meter Universal Transverse Mercator grid ticks, zone 14, shown in blue
To place on the predicted North American Datum 1983 move the projection lines 5 meters north and 36 meters east as shown by dashed corner ticks
Revisions shown in purple compiled from aerial photographs taken 1978. Map edited 1980. This information not field checked



ROAD CLASSIFICATION

Heavy-duty	Light-duty
Medium-duty	Unimproved dirt
Interstate Route	U.S. Route
	State Route

USGS Historical File GLEN ULLIN, N. DAK. N4645-W10145/7.5
Topographic Division
1960 PHOTOREVISED 1980
DMA 5677 IV SE—SERIES V871

JUL 28 1980
1650