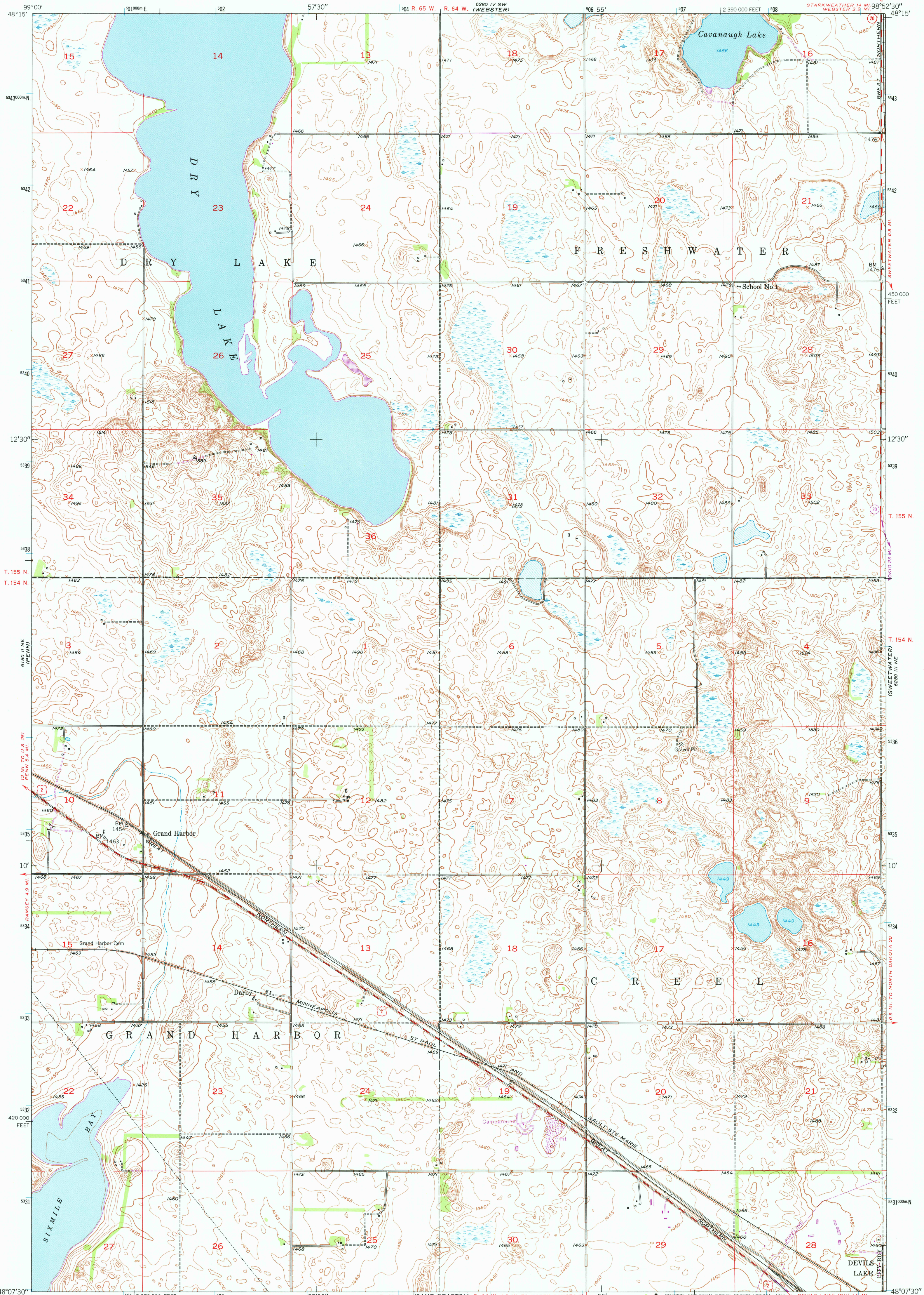


GRAND SE
CANDO SE

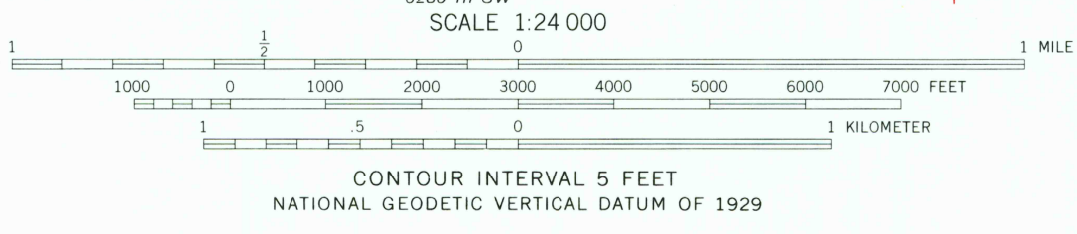
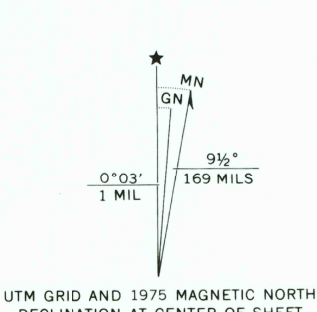
UNITED STATES
DEPARTMENT OF THE INTERIOR
GEOLOGICAL SURVEY

GRAND HARBOR QUADRANGLE
NORTH DAKOTA-RAMSEY CO.
7.5 MINUTE SERIES (TOPOGRAPHIC)
NW/4 DEVILS LAKE 15' QUADRANGLE

6800 15 SE
STARKWEATHER SE



Mapped, edited, and published by the Geological Survey as part of the Department of the Interior program for the development of the Missouri River Basin Control by USGS and USC&GS
Culture and drainage in part compiled from aerial photographs taken 1949
Topography by plane-table methods 1950
Polyconic projection. 1927 North American datum
10,000-foot grid based on North Dakota coordinate system, north zone
1000-meter Universal Transverse Mercator grid ticks, zone 14, shown in blue
Revisions shown in purple compiled from aerial photographs taken 1975. This information not field checked



ROAD CLASSIFICATION

Heavy-duty	4 LANE 6 LANE	Light duty
Medium-duty	4 LANE 6 LANE	Unimproved dirt
U. S. Route		State Route



GRAND HARBOR, N. DAK.
NW/4 DEVILS LAKE 15' QUADRANGLE
N4807.5—W9852.5/7.5
1951
PHOTOREVISED 1975
AMS 6280 III NW—SERIES V871

2700

SEP 19 1977