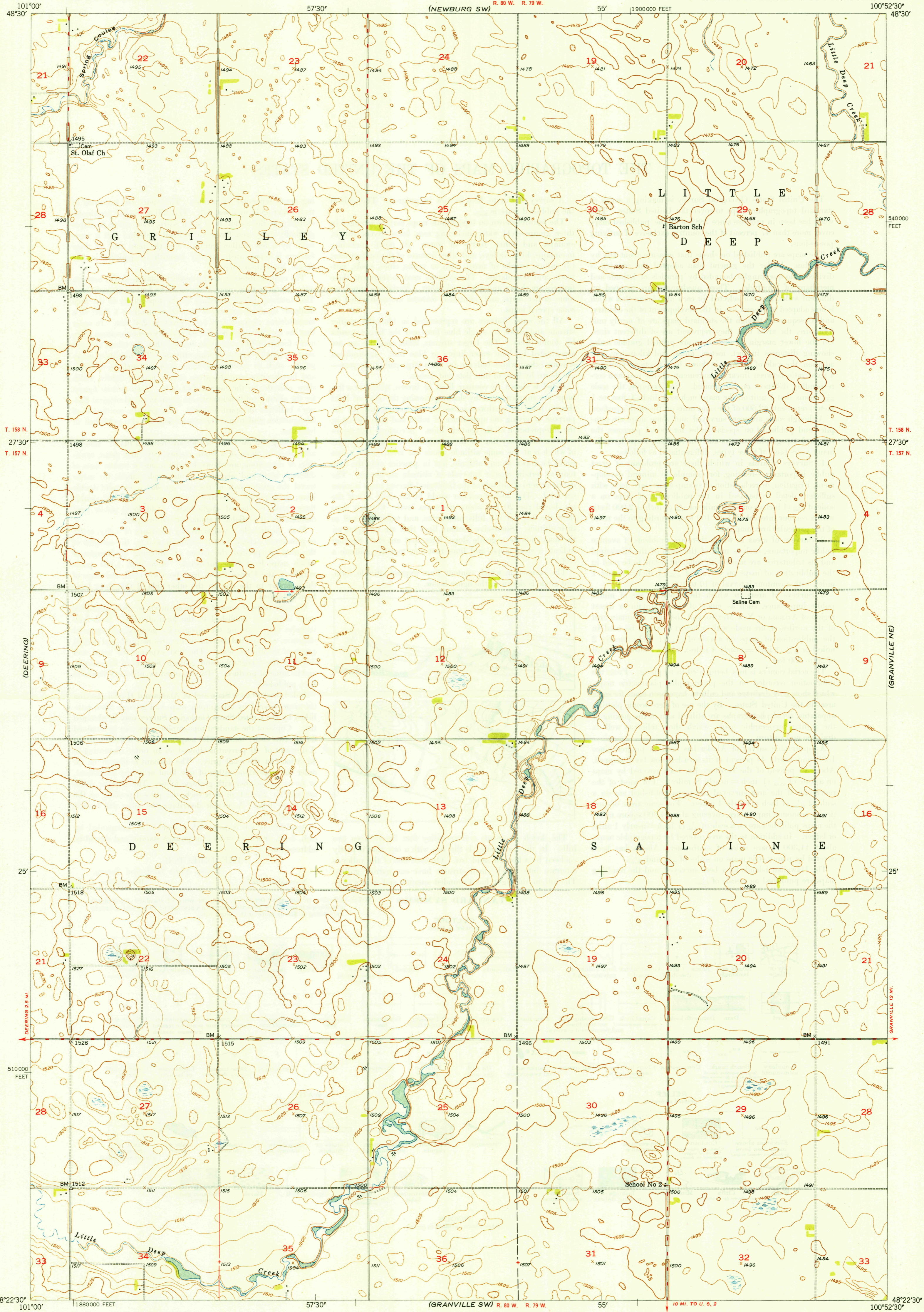


LECKMAN SE

UNITED STATES
DEPARTMENT OF THE INTERIOR
GEOLOGICAL SURVEY

GRANVILLE NW QUADRANGLE
NORTH DAKOTA-McHENRY CO.
7.5 MINUTE SERIES (TOPOGRAPHIC)

(NEWBURG SE)

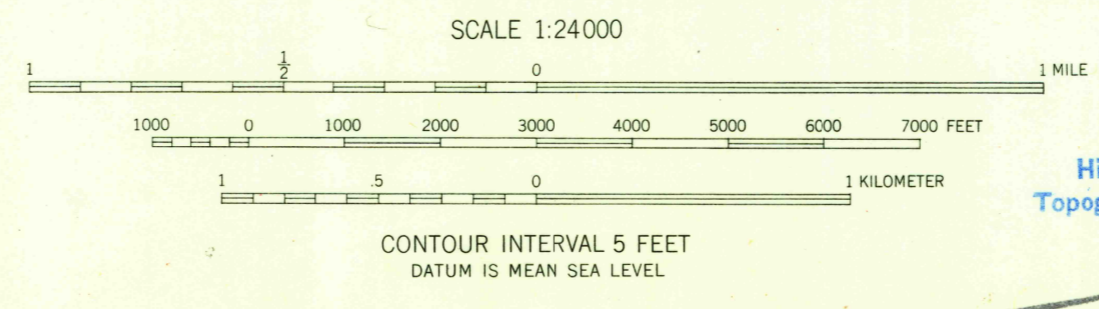


U.S.G.S.
FILE COPY
Inspection and Editing

U.S.G.S.
FILE COPY
Inspection and Editing

Mapped, edited, and published by the Geological Survey as part of the Department of the Interior program for the development of the Missouri River Basin
Control by USGS and USC&GS
Culture and drainage in part compiled from aerial photographs taken 1946
Topography by plane-table methods 1948
Polyconic projection. 1927 North American datum
10,000-foot grid based on North Dakota coordinate system, north zone

TRUE NORTH
MAGNETIC NORTH
APPROXIMATE MEAN DECLINATION, 1948



ROAD CLASSIFICATION
HARD-SURFACE ALL WEATHER ROADS DRY WEATHER ROADS
Heavy-duty. -+ LANEIS LANE Improved dirt.
Medium-duty. -+ LANEIS LANE Unimproved dirt.
Loose-surface, graded, or narrow hard-surface - - - - -
U. S. Route State Route

THIS MAP COMPLIES WITH NATIONAL MAP ACCURACY STANDARDS
FOR SALE BY U. S. GEOLOGICAL SURVEY, WASHINGTON 25, D. C.

U.S.G.S.
FILE COPY
Inspection and Editing

GRANVILLE NW, N. DAK.
N4822.5-W10052.5/7.5
EDITION OF 1949